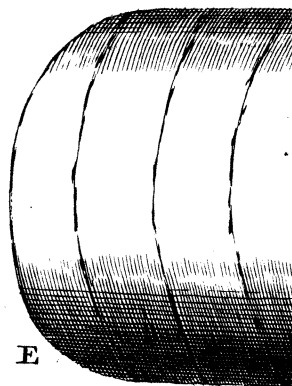
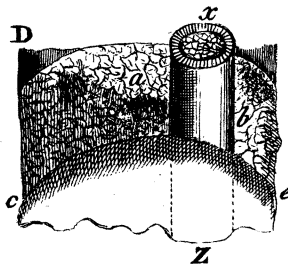
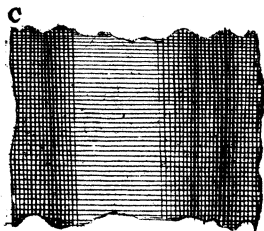
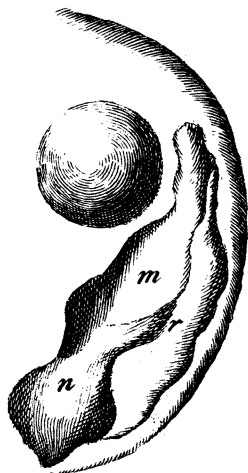
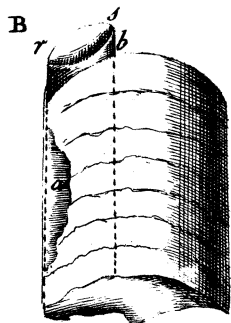
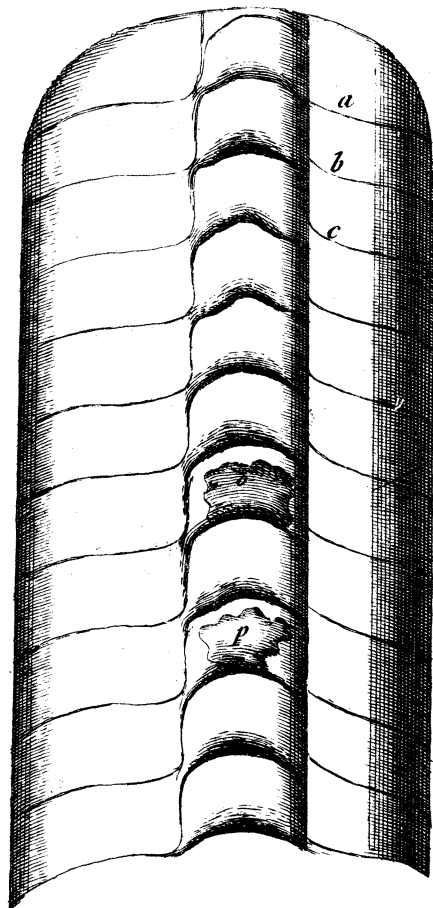
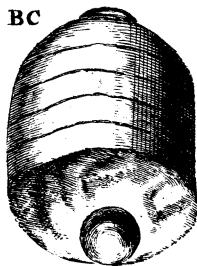
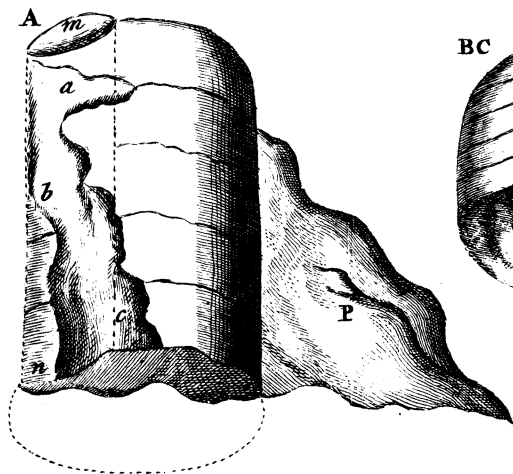


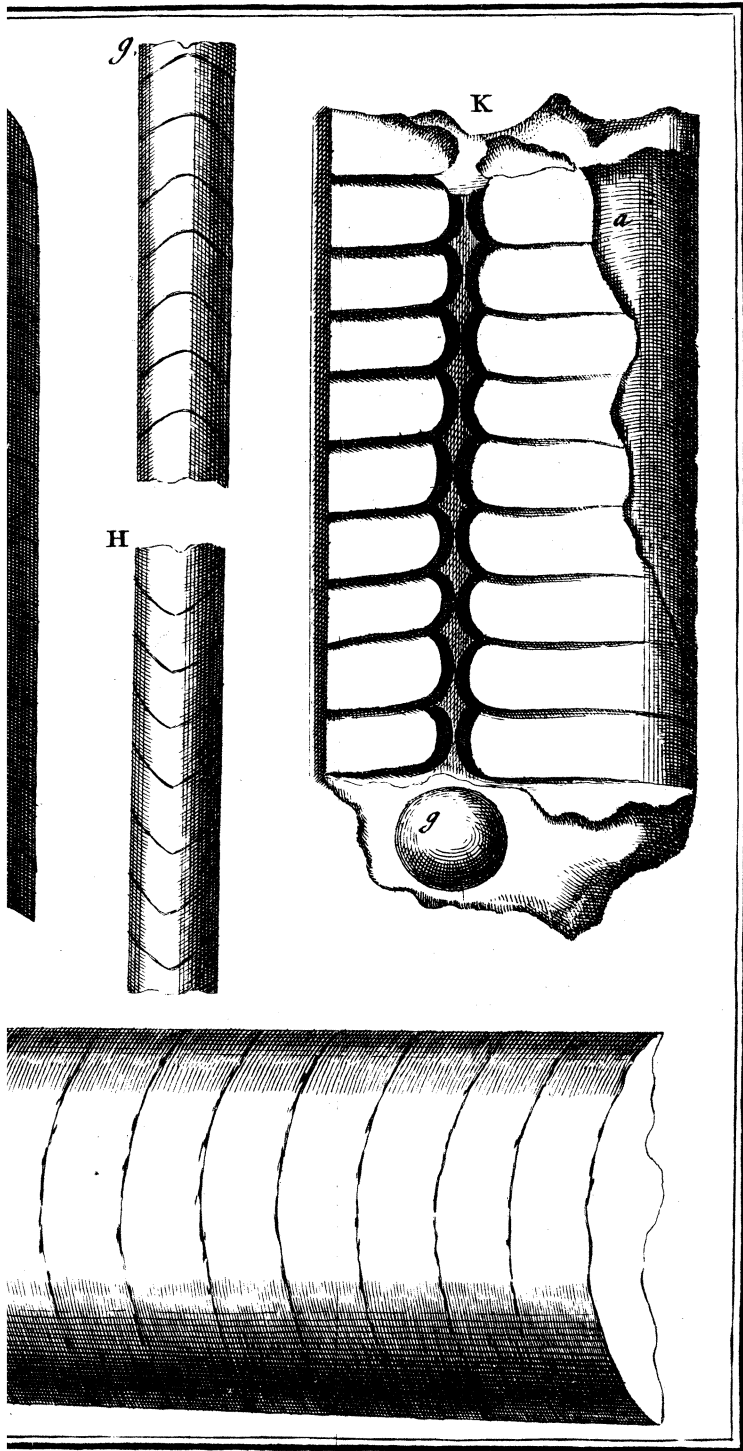
XCIII. *De rariori quadam Orthoceratitidis Specie, in Suecia reperta, tractatus : in literis a Nicholao de Himself, M. D. Riga Livono, ad Gul. Watfon, M. D. R.S.S.*

Read May 11, 1758. **O**Rthoceratiti recti in loco quodam Kelwika dicto, prope Fahlunam in Dahlia, reperti. Inhærebant lapidi cineracei coloris calcareo, variæ magnitudinis orthoceratiti, quorum portiones hic delineatas describo.

Vide TAB. XXIII.

Fig. A. Orthoceratitidis portio, cujus pars inferior saxo adhuc adhæret; ex lapide calcareo constans lente in apicem decrescens. Licet ex parvis ejus fragmentis judicari possit, cylindrum esse orthoceratitem, ea tamen si conjunguntur, verum formant conum, et mihi videtur ex crassitie siphonis, orthoceratitem hunc conicum duos fere superavisse pedes. Vidi orthoceratitem in alio lapide calcareo, quem etiam ibidem loci, Kelwikæ, reperi, longitudine duorum cum semisse pedum: sed impossibile erat, integrum eum excutere, nimis enim fragile erat. Est portio hæc orthoceratitidis testa sua ambiente vestita in *abc*. Quinque conspiciuntur articuli, thalami quondam, arctissime sibi invicem insidentes, per quos a latere procedit siphon *mn* sat crassus, qui in omnibus fere, quas possideo portionibus orthoceratitarum,





rum, a centro semper remotus, hic ad peripheriam positus conspicitur. Siphon admodum lente decrescit, ex quo etiam de longitudine coni hujus judicare licet. Crustæ vel testæ *a b c* interior pars, quæ articulos tegit, crystallina est, ex spatii crystallis tenuioribus irregularibus constans.

Fig. B. Portio alia, in qua articuli minus crassi; siphon quoque ad peripheriam positus, testa sua in *a* tecta. Conspicitur septum illud testaceum in *b*, communi tenuior, quod ab ipso articulo superiori procedens, siphonis partem *r s* investit.

Fig. B, C. Portio orthoceratitidis ex lapide calcareo cineracei coloris: siphon vero, fluore spatioso egregie crystallisato, constat.

Fig. C. Portio alia per axin divisa, cujus pars exterior, testa quæ striis circularibus levioribus externe ornata, investita conspicitur.

Ex parte interiori *Fig. D.* confirmatio ejus interna adparet. Siphon \propto gracilior, inter centrum et peripheriam positus, dimidia parte ambiente articulo denudatus adparet; dimidia altera, inferiori articulo *c d e* tegitur. Articulus *a b* spatio crystallisato pellucido polygono repletus est. Articulus *c d e* vero, saxo spatioso incarnato paululum repletus est. \propto . Siphonis pars superior, ubi radii a peripheria ad centrum tendentes conspiciuntur. Inter crystallos spatiosos in articulo *a b* striæ hinc et inde adparent nigræ, asphalti repletæ; ita etiam cavitas articuli *a b*, æque ac superficies convexa articuli *c e*, quæ in primam concavam recipitur, lamina asphalti vestitæ sunt.

Fig. E. Pars alia orthoceratitis majoris, et quidem facies exterior.

Fig. F. Facies ejus interior, in medio divisi, cum siphone transeunte satis crasso. *abc* et reliquæ striæ leves, sunt diaphragmata, articulos *a b* invicem separantia, siphonem proprie constituentia, siphonisque tenuiorem membranam, quæ in *o* et *p* adhuc conspicitur, ambientia. Sunt diaphragmata hæc crassiora in siphonis vestigiis, et sibi invicem ab inferiori parte insident. Siphon hic inter centrum et peripheriam positus est.

Fig. G. Materies calcarea, quæ siphonem replevit striata, et quidem pars ejus interior, qua centrum orthoceratitis respicit, peripheriæ opposita.

Fig. H. Facies posterior, peripheriæ propior.

Fig. I. Pars concava articuli majoris orthoceratitis, in qua diaphragmatis testacei jam crystallisati portiunculæ albicantes *m n r* conspiciuntur cum siphone transeunte.

Fig. K. Portio alia orthoceratitis majoris, ejusque facies exterior, cum siphone *g* ad peripheriam posito. Conspiciuntur hic diaphragmata, quæ ab utroque latere, ab articulis procedunt, se invicem conjungunt, et siphonem ab exteriori parte obtegunt. *a* est testæ satis crassæ portiuncula, qua portio hæc orthoceratitis vestita adhuc est.

