

Parental Filter

By



End User and Technical Documentation

© 2004 NWSP

Choose Your Language.

This manual is divided into five sections. Each section is written in a different language. Choose the language you prefer.



Este manual se divide en cinco secciones. Cada sección se escribe en un idioma diferente. Escoja el idioma que usted prefiere.



Ce manuel est divisé en cinq sections. Chaque section est écrite dans une langue différente. Choisir la langue que vous préférez.



Questo manuale è diviso in cinque sezioni. Ogni sezione è scritta in una lingua diversa. Scegliere la lingua che lei preferisce.



Dit handboek is in vijf onderdelen verdeeld. Elk onderdeel is in een verschillende taal geschreven. Kies de taal die u verkiest.





Welcome to Parental Filter

Congratulations on choosing Parental Filter.

Parental Filter is designed to block web sites that may be unsuitable for you or people in your care. Parental Filter is a porn blocker plain and simple.

About Us

NWSP consists of Tony Ganino and a special group of volunteers that constantly help improve Parental Filter through Internet correspondence. NWSP is designed to be beneficial to humanity and produce beneficial products for a greater good.

Parental Filter is 100% Freeware

It costs you no money to use Parental Filter. It costs you no money to distribute Parental Filter. You are free to use it and are welcome to use it.

You would be amazed at the amount of work and effort required to produce Parental Filter. Please appreciate the efforts. What we do is not easy. So when you provide feedback it is generally good nature to begin with a few kind words. For example, thank you. I generally speak for most freeware programmers, motivating feedback makes a difference.

Parental Filter is Advertising - Spy ware – Backdoor - Nag Free

Some software contains advertising. People generally do not like advertising. Personally I am suspicious of the whole affair and Parental Filter is advertising free providing you with a better experience.

Some software use spy ware to find out what operating system you are using and other personal information. People generally do not like spy ware. Personally I do not like it either. Parental Filter has no spy ware.

Some software nags you to either register or do something else. Parental Filter does not nag anyone to do anything.

Some software place a backdoor where once you install the software, someone can find your computer and access it, viewing and learning about you. Parental Filter has no backdoors, there is absolutely no background communication going on between NWSP and your copy of Parental Filter.

Parental Filter Is Not Affiliated With Any Other Companies.

Any information you give the NWSP is not sold or misused or viewed by other companies. Emails, records and other information usually get erased after the value of the information communicated expires.

License

1) Copyright.

The software named Parental Filter contains confidential information of NWSP Software Design and all copyright trademarks and other intellectual property rights in the Software are the exclusive property of NWSP Software Design.

Parental Filter is © Copyright NWSP 2004 All Rights Reserved.

Icons and artwork in Parental Filter may work be the work of NWSP and are the © copyright of their respective owners.

2) Disclaimer of Warranty.

THERE IS NO WARRANTY FOR THE SOFTWARE NAMED PARENTAL FILTER. ALL EXPRESS OR IMPLIED REPRESENTATIONS AND WARRANTIES, INCLUDING ANY IMPLIED WARRANTY OF MERCHANTABILITY, FITNESS FOR A PARTICULAR PURPOSE OR NON-INFRINGEMENT, ARE HEREBY EXCLUDED TO FULLEST EXTENT PERMITTED BY LAW. NWSP SOFTWARE DESIGN DOES NOT WARRANT THAT THE OPERATION OF THE SOFTWARE WILL BE UNINTERRUPTED OR ERROR-FREE.

3) Limitation of Liability.

IN NO EVENT WILL NWSP SOFTWARE DESIGN BE LIABLE FOR ANY LOST REVENUE, PROFIT, OR DATA, OR FOR SPECIAL, INDIRECT, CONSEQUENTIAL, INCIDENTAL OR PUNITIVE DAMAGES HOWEVER CAUSED.

4) Term.

The term of the license granted herein shall be perpetual unless terminated by written notice by the User or terminated by either party for material breach.

Immediately upon termination of this license for any reason the User shall cease using the Software in any form.

5) Distribution

NWSP grants permission for the use of Parental Filter in magazines, cover mounts associated with the magazine and subscription CD's or DVD's associated with the magazine. NWSP grants permission for Parental Filter to be installed on new or used computers by retailers. Such companies or people do not have permission to profit from the individual sale of Parental Filter. Such companies or people wanting to use Parental Filter shall disclose to the recipient that the Software is free of charge or freeware. NWSP can revoke distribution permission at any time as NWSP deems necessary.

Homepage

<http://users.tpg.com.au/adslgoej>

Email

admintony@tpg.com.au

You are free and welcomed to email me. Breaches, bugs or anything else which will help improve Parental Filter should be emailed. Reply depends on the amount of emails I receive. Some days I get too much and cannot reply to everyone.

Donations and Subscriptions

You can make donations and subscribe to Parental Filter for \$2 a month. Payments are made through PayPal. The difference between donating to Parental Filter or another charity is that you can plainly see where your money is going.

There are two links and the bottom of the webpage at <http://users.tpg.com.au/adslgoej> Named "Make a donation" and "Subscribe". We do not email you asking for money.

Credits & Thankyous

[Venkat Mani](#), Vivek Patel, Jaime Muscatelli, Venkatesh K, Michael Frey, Patrick Moore (Zelda), Tom van Oorschot, Alex Allan, Randy Birch, |P|h|r|o|z|e|n| Entertainment - Joker, The Hand aka G.D. Sever, Gregory Kirk, Kim Komando, TechTv, Tripleman, Yahir Vite, Dirceu Veiga, Mike. Yazoo, Antonio Gatta www.agstudio.cjb.net for allowing me to display their fabulous icons. Many thanks go to all the online community of programmers. Parental Filter will go open source at the appropriate time. Many thankyous to all those who have taken the time to email us with suggestions and improvements, you are becoming too many to mention but keep the feedback coming. Finally, many thanks go to all the software sites for adding Parental Filter and allowing it to be downloaded. Your efforts have been invaluable. Parental Filter would not be available without you. Thank you.

Volunteers

Saverio M takes care of the Italian translation.

Elpidio Petrocchi also takes care of the Italian translation.

Laurent Buffolo takes care of the French translation

Sebastien Latour takes care of the French translation

If you want to include yourself, you are welcome. You are doing valuable work and many children will benefit. You are also doing valuable work to improve your own character.

If you know how to translate between languages, you could translate Parental Filter into a language that others can understand. admintony@tpg.com.au

If you find a site that is not getting blocked. admintony@tpg.com.au

Parental Filter Why?

Parental Filter was programmed because no truly freeware parental filters were available. A product like this supersedes monetary gains. Asking for money for a product such as this exploits the situation further in my view. The target age range is approximately up to 15 years of age. Parental Filter attempts to provide protection against the unintentional viewing of inappropriate material.

Minimum System Requirements

- CPU: 450Mhz
- Ram: 64MB
- Hard Drive: 2GB
- X VGA Monitor: 800x600
- Graphics: N/A
- Sound: N/A
- **Microsoft Windows Operating System 2000/XP/2003**
- **Microsoft Internet Explorer 5**
- **MDAC 2.8**
http://download.microsoft.com/download/c/d/f/cdfd58f1-3973-4c51-8851-49ae3777586f/MDAC_TYP.EXE
- **JET 4 Service Pack 8**
http://download.microsoft.com/download/4/3/9/4393c9ac-e69e-458d-9f6d-2fe191c51469/Jet40SP8_9xNT.exe
- Broadband Internet Connection

I do not own a copy of **Windows 95, Windows NT or Windows Me** and cannot track down any copies. This means I cannot run tests on these operating systems and cannot offer any real support for them. Consider upgrading to Windows 2000 professional or greater or consider supplying me with a copy. There are many issues concerning Parental Filter that cannot be resolved with the above versions of operating systems until I find a copy.

Windows 98: There are many issues concerning Parental Filter and Windows 98. If you still use Windows 98 you may not get an optimal experience. I will keep working on it.

Dial Up Internet Accounts: I do not have the financial resources to test Parental Filter with modem dial-up. Parental Filter is tested using ADSL always on account.

PS. Always backup your work.

Quick Start

When you start Parental Filter the monitor method should be ready to go to work. To use the proxy method you need to tell your browser to utilize it. Look at the proxy method in this manual for example configuration screens. The proxy method is better.

Pressing F9 will hide Parental Filter and Press F10 to show it again. If you have children that will try to disable Parental Filter, then this product may not help you. It is fairly easy for those who know to disable. Parental Filter was never intended as policing tool and NWSP stands against forcing censorship on people. It is a serious issue when adults try and censor material for other adults, but when it comes to children we have to make the right choice for a better world and a better future for all involved. Parental Filter provides and secures an Internet surfing experience that is free of objectionable content. You have the power to define objectionable content.

Parental Filter 0.1.9 News

Thank you for the feedback you are providing on Parental Filter. My email is always available do not hesitate to use it. There have been many improvements to Parental Filter. It is many folds better than the previous version.

Note: Stability may still be an issue but the situation is slowly improving. We have a fairly comprehensive complete list of banned sites which will be included the next version. I am trying the totally stabilize the version at this stage before adding any more new features.

Much of the improvements suggested through feedback have been answered in this version. Such features as,

1. 1 new method of filtering named the Direct Method
2. Software filtering
3. Block local and remote ports.
4. Obsolete the; uninstall previous version before installing a new one.
5. Many 0.1.8.1 bug fixes.
6. Great new icons by Yazoo and others, you can click on the icons and be sent to artist homepage.
7. Equipped with a http proxy server. Maximum 1000 simultaneous connections. Beta. The amount of connections has been scaled down to keep it SOHO.
8. The users interface has been altered.
9. Proxy conflicts with existing proxy. (Use the direct method instead of the proxy if this issue applies to you.)
10. If a banned word is found in the clipboard, the clipboard is cleared.
11. Detection of foreground window resolves the browser redirects while typing in e.g. notepad. I type "SEX" in notepad. It opens Internet Explorer with redirected sites WHY? I didn't use IE or Netscape or any Messenger.
Old passwords not removed from the database issue resolved.
12. Many code optimizations.
13. Some entries get accidentally deleted from the database. Hopefully this issue is resolved.
14. The proxy can block picture search engines, like www.google.com's picture search. If a picture is named for example XXX it gets blocked.
15. Outlook Express code overhauled.
16. Include Entireweb.com as a redirection site.
17. When I shutdown the computer it tells that there is a program that couldn't be closed andI press END NOW issue resolved.

To-Do

- Redirection support for proxy.
- Better protection against the possible corruption of files namely language.lib.
- Testing under Windows 98, Windows 95 & ME.
- Unicode issue.
- CPU throttle is upside down.
- Merge databases. Save previous version.

- Disable proxy tampering at the client computer.
- Memory use has to come down.
- I am using Win2k and created 3 users accounts it ask password to every user who just login in same pc but different account like user, guest, kids. It shouldn't ask for password. It should run silently in background" correct.

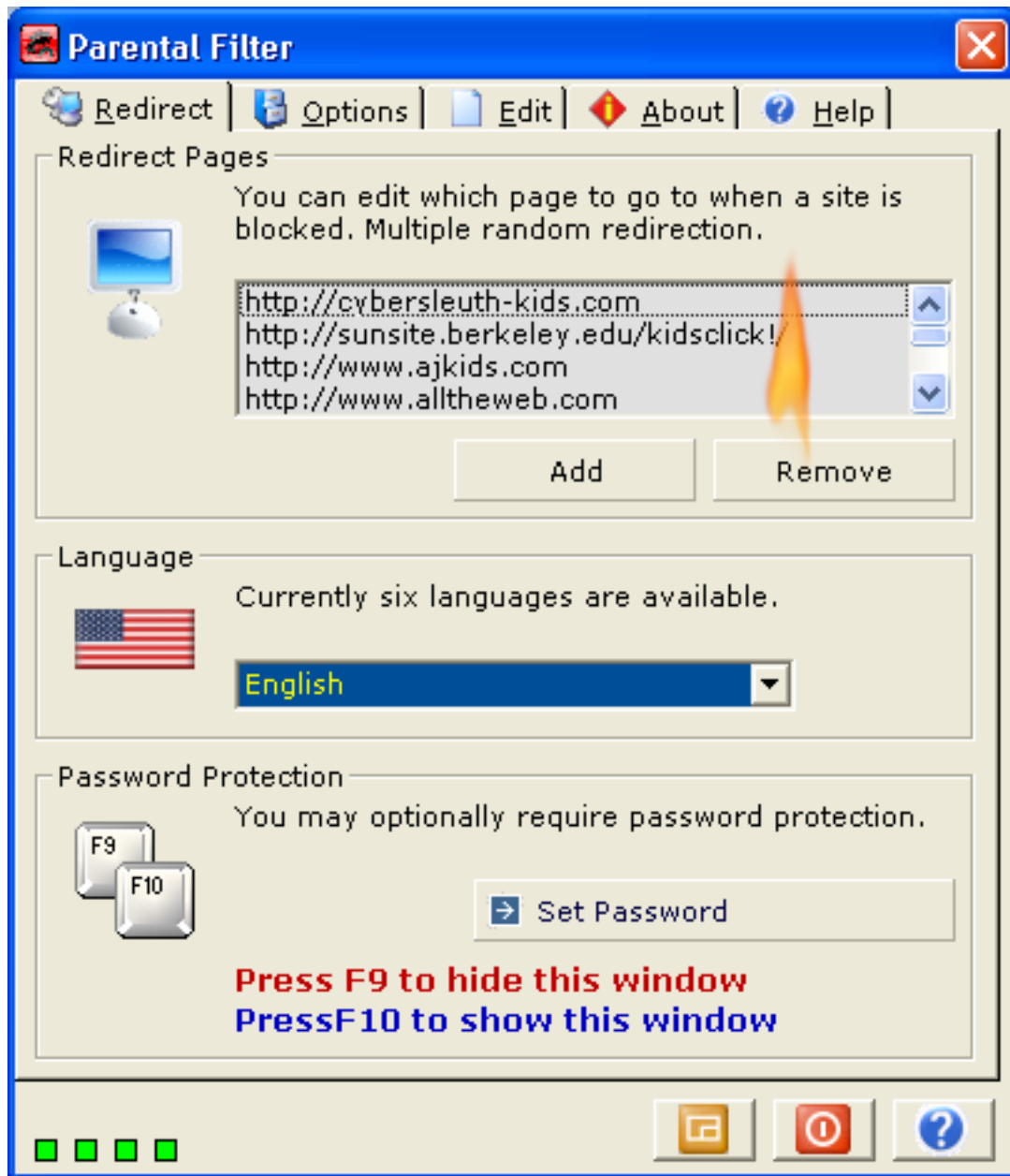
Many of you had problems with the last version. I apologize, we just do not have the resources financially to provide the kind of support we would like to. We cannot promise anything or guarantee anything. Please be patient Parental Filter will improve.

If Parental Filter fails, please let NWSP know. admintony@tpg.com.au

How This Document Is Organized

This document takes you through each feature of Parental Filter by sequentially addressing the user interface. Therefore beginning with the Redirect Tab and Redirect pages and then moving on to Language and then Password Protection. From there, we shall sequentially move on to the Options Tab.

Redirection Pages - Many Redirections



When a website is blocked, a redirection to another website or a local page usually occurs, that is how most filters usually deal with the situation. It is a nice way to deal with the situation. The most efficient way of dealing with situation is to have no redirection at all and the browser acts as if nothing happens, obviously this uses no bandwidth. Parental Filter allows multiple redirection sites, one web address is randomly chosen from a list of many web addresses. The list box in the screenshot above shows the active websites you can redirect to. You can add or remove those definitions to redirect to your favorite websites.

You can also make custom pages, publish them on the web and redirect to them. The html file can reside on your hard-drive and you can specify that page to redirect to. Note: Note all supported browsers support locally found custom pages, in such a case simply publish the page on the web and redirect to it. One redirection site must be active at all times. One idea was to create a custom page of bible verses and when a page gets blocked a loved one would receive a bible story or something designed to strengthen and promote well being.

As of version 0.1.4 all offending windows are redirected, even banned words. As of version 0.1.6 Mozilla has full redirection capabilities. Opera also has full redirection capabilities. As for Netscape, offending windows are closed and a new default browser window is opened. We are still working on Netscape; someone must have cut the communication lines down at Netscape HQ. Supported browsers are MyIE2, Avant Browser, and of version 0.1.7 Netcaptor is also supported. If you use a different browser and you need to obtain support simply by sending NWSP an email.

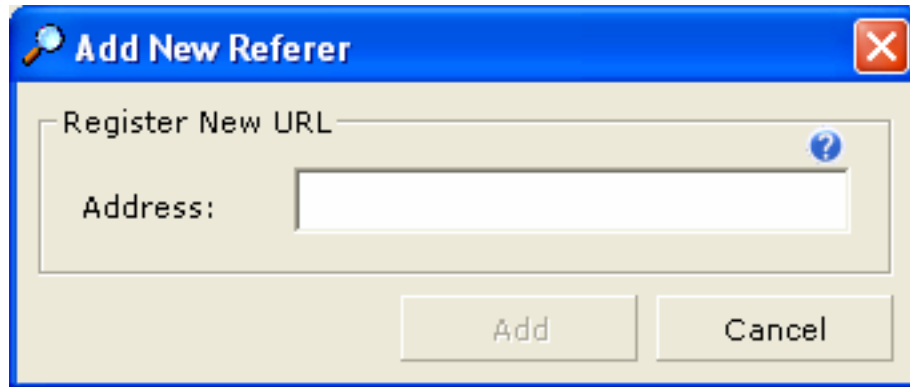
Browser	Web Redirection	Local Redirection
Internet Explorer	Yes	Yes
Netscape	No	No
Opera	Yes	Yes
Mozilla	Yes	Yes
MyIE2	Yes	Yes
Avant Browser	Yes	Yes
Netcaptor	Yes	Yes
Real Player Browser	Yes [limited]	No

The above browsers should all perform an action when Parental Filter is triggered, if they do not, then something has gone wrong.

Note: Parental Filter is equipped with a proxy that is not browser specific and should work with all browsers. Another option is to use the proxy locally. It could also be used as an added line of defense to support the monitoring method.

Add a New Redirection Site

You can add a new site to redirect to when a website is blocked. This will allow you to choose your favorite websites. Clicking on the Add button brings up the following display.



Enter a new website name in the textbox, the URL must be active, that is you must be able to reach the website from Internet Explorer or Internet browsing software. Otherwise the can not find server page will appear, which may be the effect you are looking for. The correct format is **http://www.myfavorite.com**, exchange myfavorite with your own favorite such as **http://www.yahoo.com**. After this, click the add button, the website is then added to the list box and is now active and ready to use. So when a website is blocked the page you will see is **http://www.yourfavourite.com**.

Adding such values as for example **C:\mypage.html** allows you to redirect to a custom page you can make if you are HTML savvy. You can publish your own site on the web and redirect to that site also, the choice is yours.

You will only find one possible message box,



The above picture states that the site you are trying to enter is already entered and it is a duplicate. The site is not added and you get this message box instead telling the site is already active. Perhaps you or some one else entered the site earlier and forgot.

Remove A Redirection Site

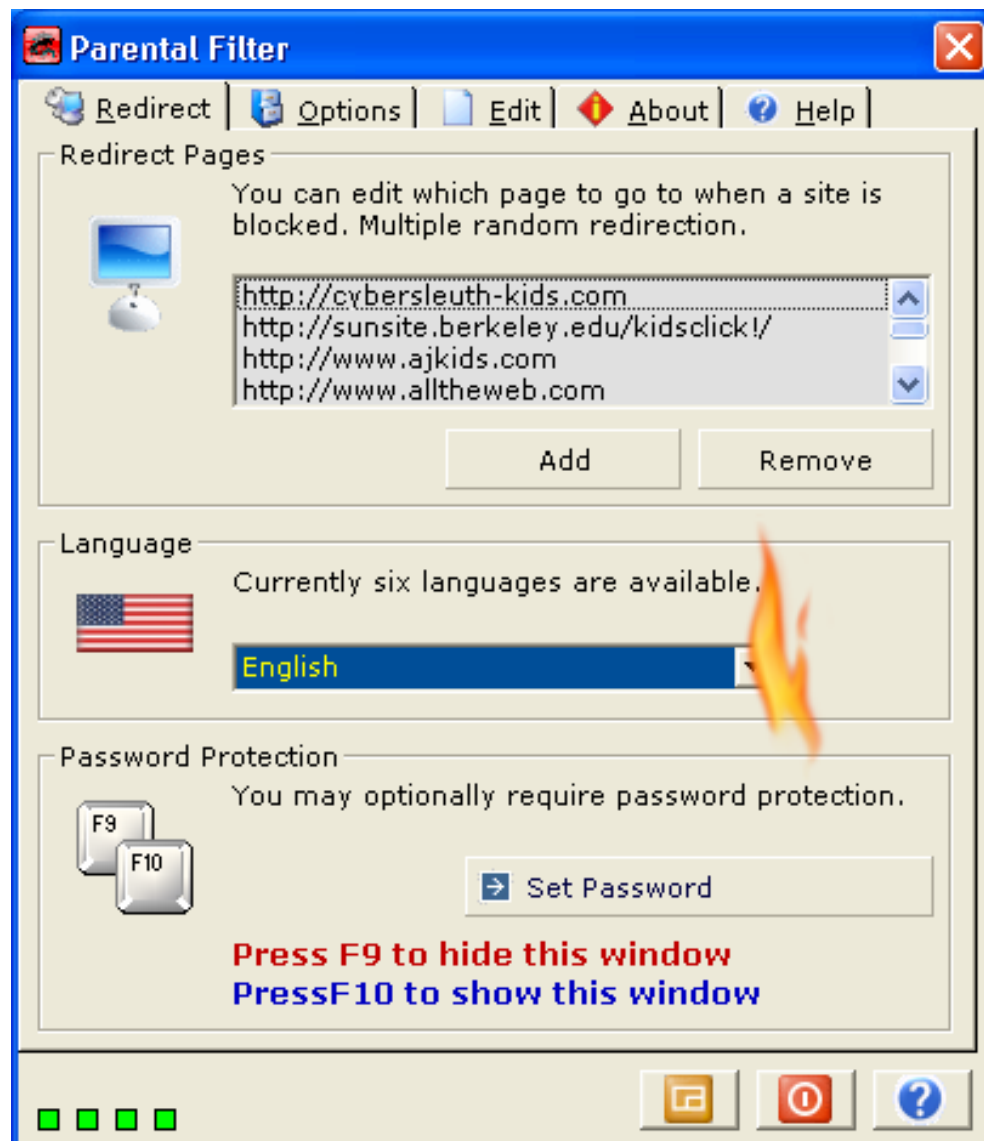
You can remove a redirection site simple by clicking the website address you want to remove from the list box and then clicking the remove button. You will not see the website in the list box and know it has been removed.

You can add and remove websites as you please, but please always keep one website available for redirection. This ensures one option can be always selected.



If you see the above message box, it means that you have not selected a website to be removed. In this case select an item from the list box by clicking on it and it should then be marked in blue or your desktop color, you can then click the Remove Site button and the site will be removed.

Language

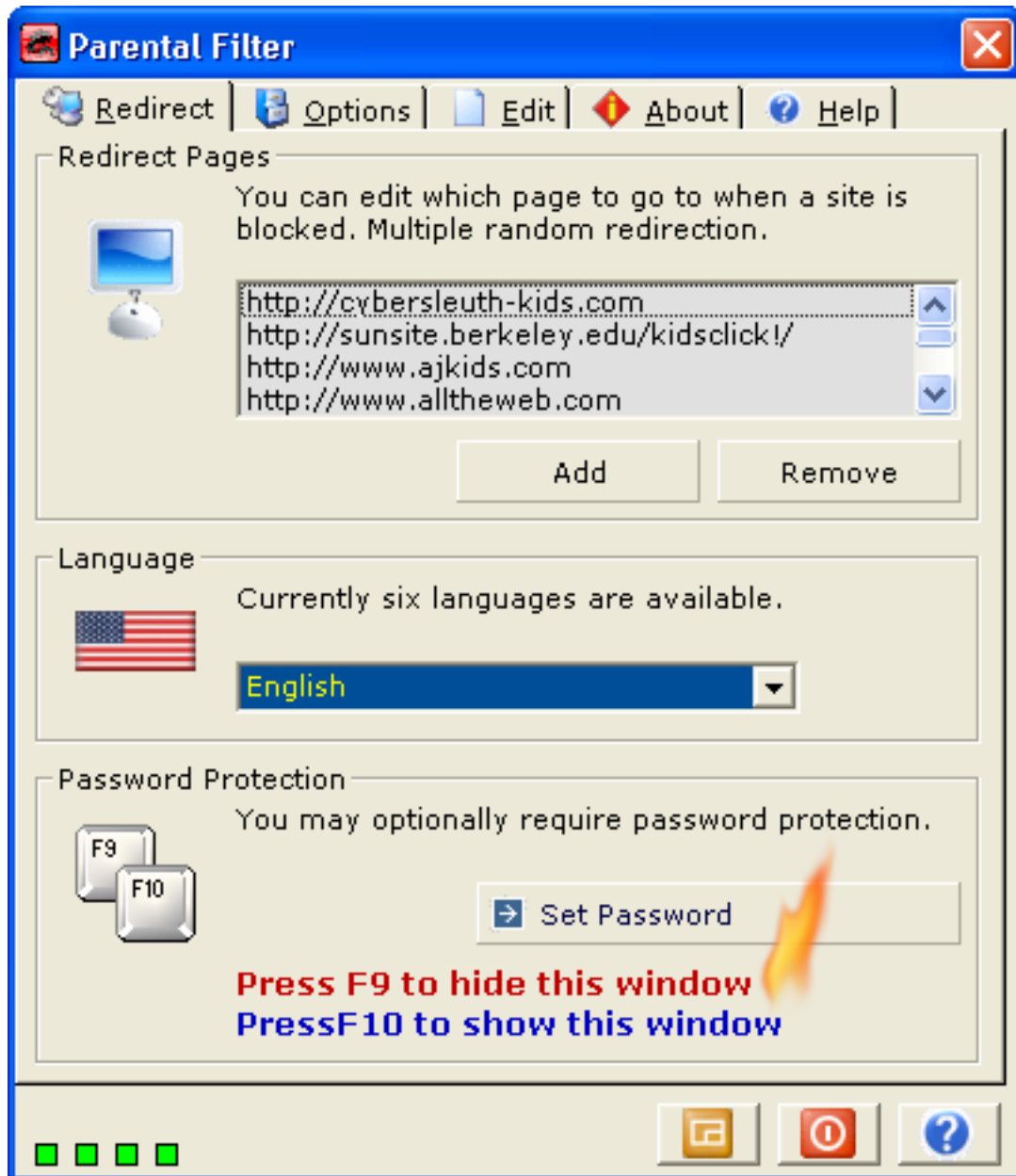


They are currently 6 languages available with a varying degree of competency. They are English, Spanish, French, Italian, German and Dutch. I am able to barely translate Parental Filter into other languages with the aid of such sites as <http://www.freetranslation.com>. Although the translation from these sites can be at times incorrect. Translating Parental Filter is a work in progress you can offer your services or request your preferred language.

Unicode Support is an ongoing issue and efforts are being made to give Parental Filter Unicode support. If you try and translate into a language like Russian you get question marks instead of actual Russian letters. A translation editor may also be provided in the future to give people who use Parental Filter an easy way to translate Parental Filter into their preferred language and even submit that work for the benefit of others.

To select a language simple click on the arrow on the combo box and a list should drop down, allowing you to choose a different language. Once selected the icon, interface and help files should all change to your preferred language automatically.

Password Protection

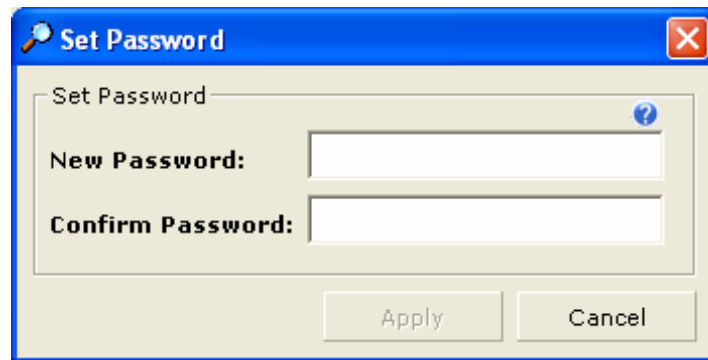


As a light security precaution you can hide Parental Filter while it is working. Pressing **F9** on your keyboard will make Parental Filter vanish, although it is still filtering. When you want to make Parental Filter reappear once again, press **F10** key on your keyboard.

Sexuality is an important issue for people; the young require good advice and require a means to build good character in the face of the adversity that biological changes bring. Sexuality can really mess up peoples lives. I was reading a book a while ago and came across Jesus teaching in self mastery. It is a great teaching and something to seek. It is too bad that high school religious studies do not focus more, if at all on self mastery, and the importance of showing love. To many times in our lives we are left to our own devices and do not understand that love is the way.

In version 0.1.5 a secret delay was implemented when pressing F10, it has been removed due to responsiveness in 0.1.7. Security may be of concern to you and since version 0.1.5 Parental Filter has been equipped with a password protection feature, security is an ongoing issue and future updates will focus much more on this area.

Set Password - Password Protect Parental Filter



Clicking the Set Password button brings up this dialog box. The dialog box allows you to set a password which when active makes Parental Filters options secure. A password will then be required to access Parental Filters options. Type a secret password in the text box provided and then type it again to confirm it is correct. Next click the Apply button to set the password and make the password active. Note: Setting a password is optional.

Law enforcement as a method of dealing with something you do not want others to do, (let us not get that confused with justice) fails every time. Law enforcement is just not effective; it is another aspect of an antiquated system. Neither is it effective or beneficial in the family. Therefore setting a password is optional in favor of active parental involvement.

I have a friend who boarded a plane a while after September 11 2001, while he accidentally had a knife in his pocket, he managed to board the plane with the knife without any problems, mind you this was at the height of when governments were preaching evangelically about how they were going to spend some obscene amount of money making planes terrorist proof. I know it's a downright lie.



Caution should be observed here. Parental Filter still appears as a process and can be exited that way in extreme circumstances. Unless you know otherwise there is no other way of exiting Parental Filter.

So now when you press F10 to show Parental Filter you get a dialog box asking you to enter a password instead of the Parental Filter main screen.

More advanced options allow you to even hide the password screen so you just type your password anytime on your keyboard and Parental Filter appears. The second Tab has the options where you can tick whether to hide the password screen or otherwise.

You may encounter the screen below when adding passwords.



It states that the password entered already exists and there is no need to add it again. You use the **Master Database Viewer** to edit the list of passwords. It is available when you click the Master Database Viewer button in the Options tab.

Three Levels of Security

There are three levels of security.

1st Level of Security

Pressing F9 will hide Parental Filter, pressing the F10 key un-hides Parental Filter. You can also press F10 if Parental Filter is visible but hidden under other windows. Parental Filter will then appear on top of other windows.

So simply press F9 to hide Parental Filter and press F10 to make it re-appear.

2nd Level of Security

With a password set. Pressing F10 will reveal the Parental Filter Password dialog. If you type an incorrect password the password window will display an X, to show the password was incorrect. If you take more than 15 seconds to type a password the password window will disappear. Pressing F9 will still make Parental Filter disappear.

The dialog looks like the picture below.

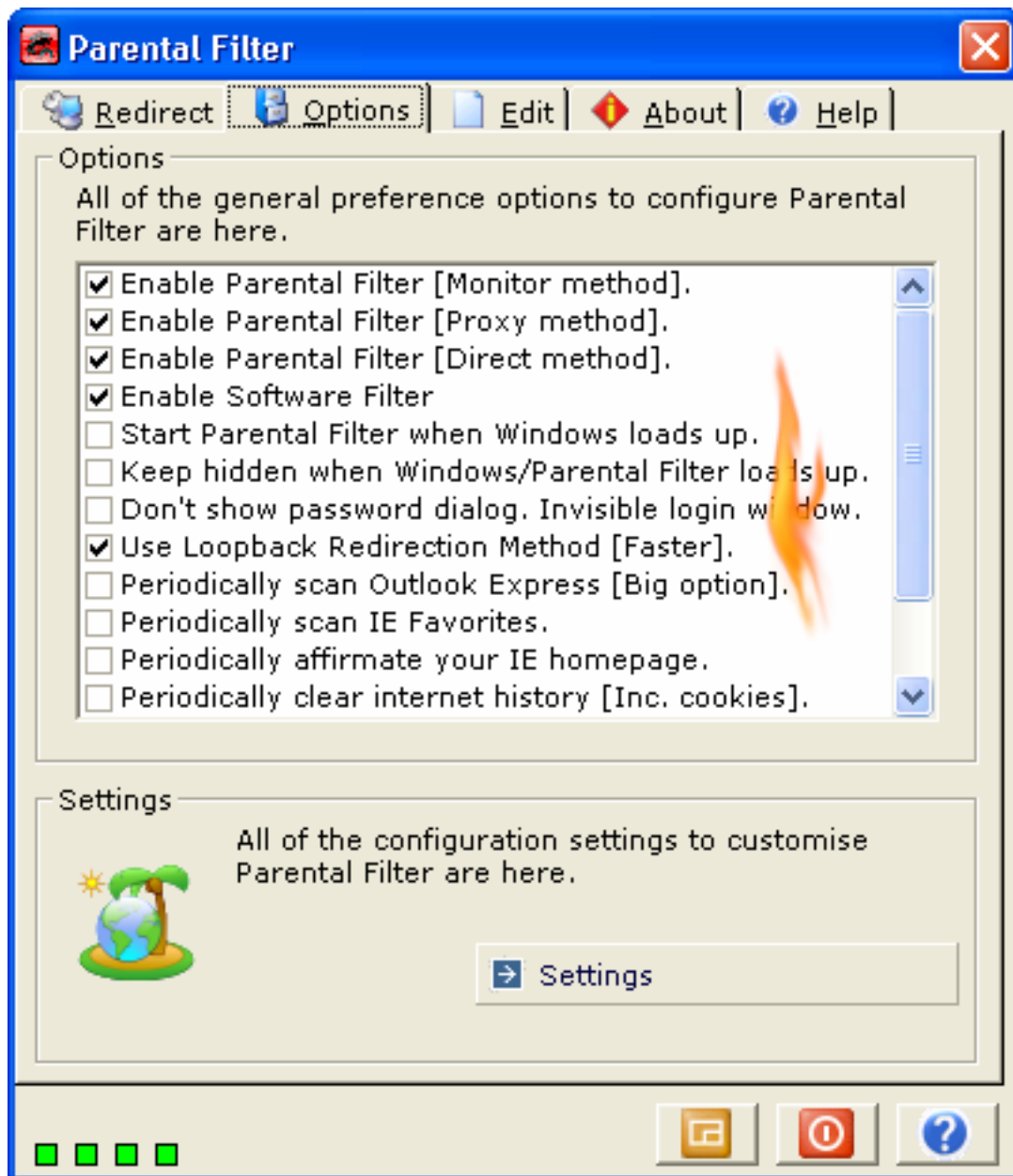


In order to uninstall Parental Filter, you must turn it off. This is a security feature against someone just uninstalling it to get bypass filtering. So make sure your password is easily remembered so you can turn Parental Filter off to uninstall it.

3rd Level of Security

With a password set. Have no window appear at all. Just type the password as if the Parental Filter dialog box were visible and Parental Filter should magically appear. The option do this is available in the Options Tab under Options. It is the 4th option. So pressing F10 will no longer do anything.

Options



Above is a picture of all the options that Parental Filter has to offer, the options conveniently converge into one place. Look at the options to get more potential out of Parental Filter. Simply click the checkbox to activate an option or click it again to deactivate an option.

Select the checkboxes as you prefer.

Below is a brief description of what each option does.

Enable Parental Filter [Monitoring Method]

At times you may need to enable or disable website filtering. When this checkbox is not ticked Parental Filter's monitoring method becomes disabled and no filtering occurs. Keep this box ticked to ensure constant filtering. As of Parental Filter 0.1.8 this option is now savable, this means you may forget it so be sure the 1st indicator flashes green, which signifies Parental Filter is active. This option does not disable the proxy filter, the next option does that.

The monitor method works by monitoring the browser window such as captions in a various amount of ways to try and find out what website is currently displayed. If it detects something wrong it redirects the browser to a safer page.

Enable Parental Filter [Proxy Method]

The proxy method is an additional method of filtering and is a far superior method of filtering. More better than the monitoring method. It works by acting as intermediate between the web and your PC, allowing sampling of the header and source of the webpage. Check and uncheck the checkbox to start or stop the proxy. **Note: you must configure the browser to use the proxy.** You cannot use the proxy method without telling your browser to use it. Configuration examples are given in the proxy section.

A proxy server is a server that acts as an intermediary between a workstation user and the Internet so that the enterprise can ensure security, administrative control, and caching service. A proxy server is associated with or part of a gateway server that separates the enterprise network from the outside network and a firewall server that protects the enterprise network from outside intrusion.

A proxy server receives a request for an Internet service (such as a Web page request) from a user. **If it passes filtering requirements**, the proxy server, assuming it is also a cache server, looks in its local cache of previously downloaded Web pages. If it finds the page, it returns it to the user without needing to forward the request to the Internet. If the page is not in the cache, the proxy server, acting as a client on behalf of the user, uses one of its own IP addresses to request the page from the server out on the Internet. When the page is returned, the proxy server relates it to the original request and forwards it on to the user.

To the user, the proxy server is invisible; all Internet requests and returned responses appear to be directly with the addressed Internet server. (The proxy is not quite invisible; its IP address has to be specified as a configuration option to the browser or other protocol program.)

An advantage of a proxy server is that its cache can serve all users. If one or more Internet sites are frequently requested, these are likely to be in the proxy's cache, which will improve user response time. In fact, there are special servers called cache servers. A proxy can also do logging.

The functions of proxy, firewall, and caching can be in separate server programs or combined in a single package. Different server programs can be in different computers. For example, a proxy server may in the same machine with a firewall server or it may be on a separate server and forward requests through the firewall.

http://whatis.techtarget.com/definition/0,,sid9_gci212840,00.html

Parental Filter is equipped with a proxy server, and the get/post header of every request is sampled, if a banned term is found, the header is destroyed and not relayed back to the client. At this time the person wanting to visit the website is left waiting for a timeout to occur. There is no reason why a different header cannot be relayed back to the client and a redirection occurs.

This method of filtering is fully browser independent which means all browsers that can be configured to use the Parental Filter proxy are supported. The proxy server can be used locally or in a local area network environment. Not only that, it is the most resource friendly and secure way of filtering. This is mainly because the proxy server resides away from client computers on a physically protected server and only requires one copy.

Two things that will be in the next version is redirection for proxy and another little tool to disable proxy tampering at the client computer. I have seen people totally bypass proxies very easily this way.

The proxy is the next best way to filter against pornography. The direct method is better. The Parental Filter proxy is designed for the SOHO and can handle 10000 simultaneous requests. It has not been fully tested so I would not recommend it if your application is mission critical or if you are not in a relaxed SOHO environment. If you find the proxy works well under other conditions you are welcome to use it. Your tests and feedback are welcome.

As previously stated the proxy can also be used on the computer it is installed on or locally, this is great for providing an extra level of protection or if your browser is not supported or if the Parental Filter fails for you. Below is how to configure the proxy and make use of it.

Enable Parental Filter [Direct Method]

The direct method is a new method of filtering that has made it into Version 0.1.9. It is far superior the above two methods. It samples the TCP/IP header for banned Internet Protocol addresses, if a banned IP is found the port is closed and communication is halted. This method is non browser specific and should work with all browsers without any need for configuration. Any budding young programmers looking to make a new freeware parental filter should go straight to this method. For those who know the TCP/IP packet contains much more information and can be sampled to an extensive degree. These types of codes are more in the category of firewalls and protocol analyzers.

Enable Software Filter

You can block software applications with Parental Filter 0.1.9. This has been included for programs such as dialers, which cost a hell of a lot of money to use. Better filter out these dialers and save the money, then you can send me more donations. Just include the title-bar caption of the software you are trying to ban.

Start Parental Filter When Windows/Parental Filter Loads Up

When you start your computer, you may want Parental Filter to load up automatically as soon as your computer is on, instead of manually starting it by clicking an icon. With this option set, Parental Filter automatically becomes active and starts filtering unwanted content. This option is remembered and stays the same until you change it.

Keep Parental Filter Hidden When Windows Loads Up

This option is in conjunction with Start Parental Filter When Windows Loads Up, with any software application when it loads up it usually shows something, but when you tick this option Parental Filter will remain completely invisible. It will not show anything, but instead remain hidden so no one knows it is there. This is until of course you hit the magic keyboard key which is F10. Then Parental Filter becomes visible again. If you have set a password the password dialog will still show even though this checkbox is tick. You have set a password and have selected the next option in which case even the password dialog does not appear. To access the configuration options you type your password on your keyboard and Parental Filter magically appears.

Don't Show Password Dialog. Invisible Login Window.

This option is available only if you set a password, Parental Filter will remain totally invisible, just type your password anytime on your keyboard and if the password is correct, Parental Filter will appear and give you access to the configuration options. F9 key will still hide Parental Filter but **pressing F10 will do nothing**.

Use Loop back Redirection Method (Faster)

Checking this checkbox and using the loop back method means that redirection occurs from your hard-drive; tests have shown that this method is faster because when a site is blocked, Parental Filter will primarily load a page from your hard-disk and then perform the redirection. Note: Pages are not cached on your hard-drive it is just faster to access you C drive first and show a blank page and then perform the redirection later. A JavaScript is used in the blank page to perform the redirection instead of in ParentalFilter.exe. Certain browsers cannot make use of this option such as Mozilla and Opera they simply re-direct as normal.

Periodically Scan Outlook Express [for Banned Content]

The option was requested and is now included. So when say when a subject or author name is found such as Viagra, or Henry Vu, the email is deleted. That is an automatic wildcard. HerViagra will also get deleted. Use the Master Database Viewer to add or remove subject and senders name. The email gets send to the delete box, so you can see if Parental Filter has correctly managed your email or not.

Note: A periodic scan is possibly about every 30 seconds, if your email is not configured you will get a message every 30 saying please configure your email, to stop this uncheck the option or configure your email.

Parental Filter does not query your email provider for new messages it only scans your existing email. Not all email providers are compatible. Test it to see if your one is and email the results. To add a new banned email access the master database by clicking the master database viewer button. You can add a new entry in the banned emails tab. Either add the name of the sender, the subject phrase or word, and or the email address. Which ever you can ascertain will be most effective.

Periodically Scan IE Favorites [for Banned Content]

Sometimes WebPages contain scripts that will automatically add their websites into your favorites list. Ticking this option does not remove the script that causes this but instead a scan is made every so often to check if any banned words appear in your favorites list. If they do, such a favorite is deemed objectionable and is deleted.

Periodically Affirmate Your IE Homepage

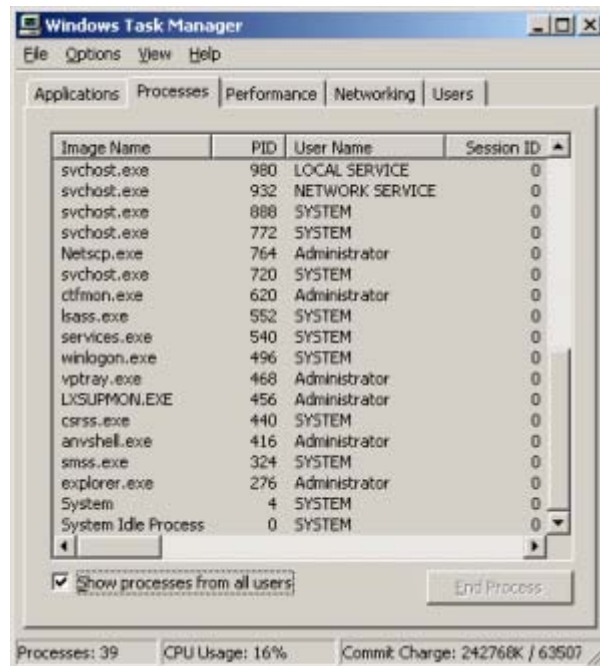
Sometimes WebPages contain scripts that will automatically change the Internet Explorer Homepage. Ticking this option does not remove the script that causes this to happen but instead a scan is made every so often to check that your IE homepage stays at the page you want. The default page is google.com. So if you activate this option you must also set your start-page or it may change to google.com.

Periodically Clear Internet History (Inc cookies)

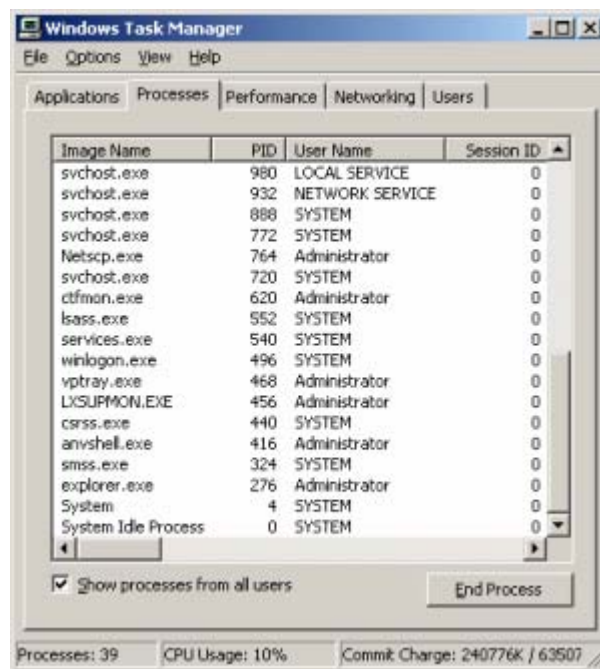
Some persons like to keep their cache and cookie cache clear at all times. Windows retains and records history such as which WebPages you visit. It also makes use of cookies which are files that hold information about what you do online, such as when you type your username and password and click the option to remember the details so next-time you go to that site you don't have to type anything and you are automatically logged in. Many sites use cookies to gain information and spy. You can choose to clear these caches, Parental Filter makes no distinction on whether a cookie is a form filler cookie or a spy cookie as Parental Filter is strictly a porn blocker not a history cleaner, or spy ware remover. This option has been made available due to research that was done to remove objectionable cached material when a site gets blocked.

Disable Process View in Windows XP/2003

You can remove Parental Filter by pressing Ctrl-Alt-Del and looking up the process tab and ending the Parental Filter process, One way not to have Parental Filter show up in the Process list is to make Parental Filter a service, the code to do this is extensive and will take time, in the mean-time you can check this option and have the process tab disabled. Uncheck this value and the process tab will be enabled. Under Windows 98 Parental Filter does not appear in the Task Manager at all.



Disabled



Enabled

Note: this is language specific, if you use a different language other than English, you must send what your language says is “Windows Task Manager”, “Processes” and “End Process” so I can include them otherwise for other languages setting this option may not work.

Show the Yazoo's icon in System Tray

You can have Parental Filter show an icon in the system tray, therefore allowing you do actions by right clicking on that icon and selecting an action. There is currently only one option and that is to show Parental Filter when it is hidden. The icon is designed by Yazoo. By the way you can click on most icons and be transported to the designer's homepage.

Wait for Enter Key before Redirecting [IE]

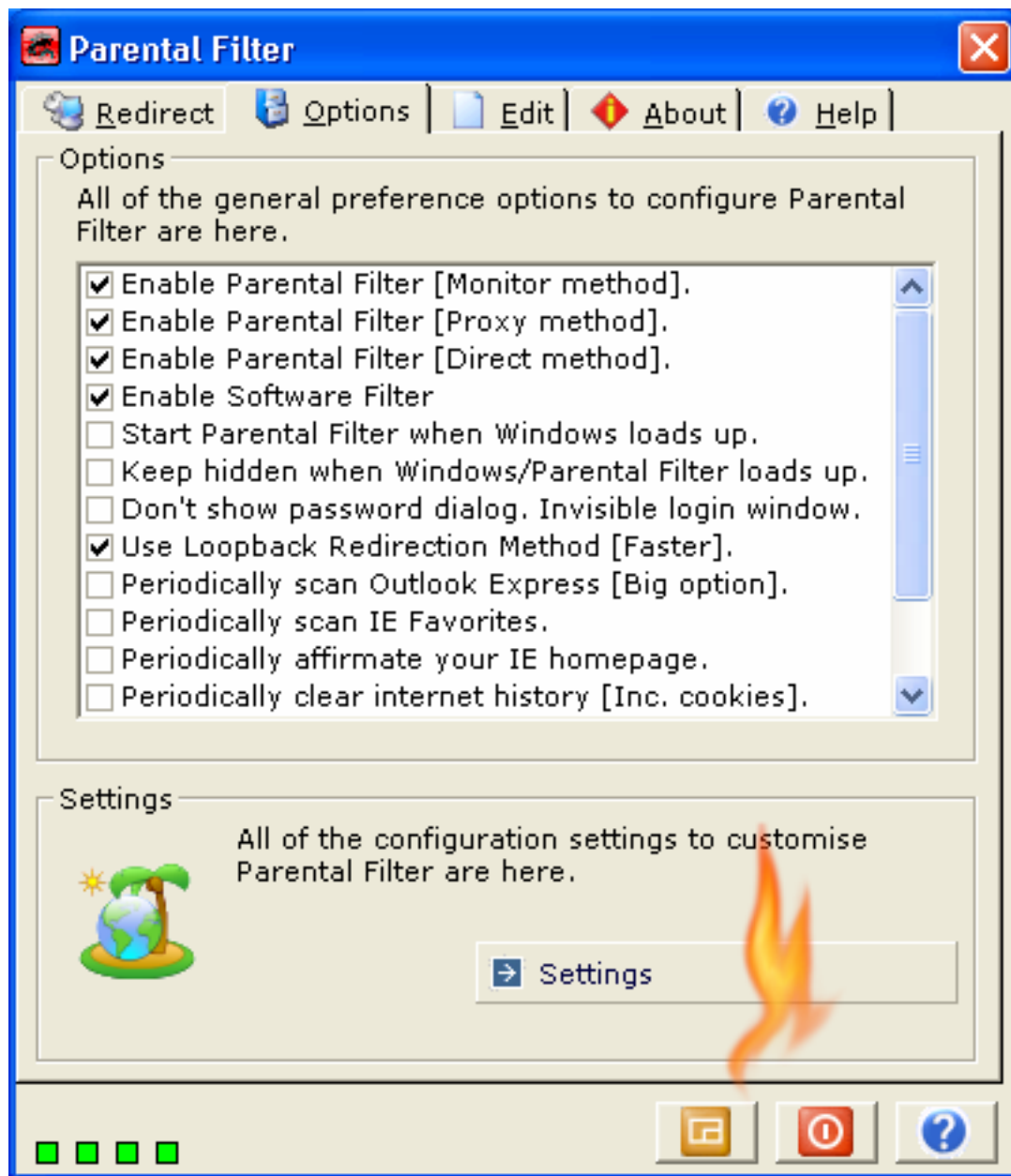
Like most conventional filters, you must press enter before redirecting. Tick this option to wait until you press enter before redirecting. If you have a slow connection you may get a little of the next page before redirection occurs, if you cannot tolerate this, either uncheck the option or use the proxy or do both.

Remove from Add/Remove Programs List

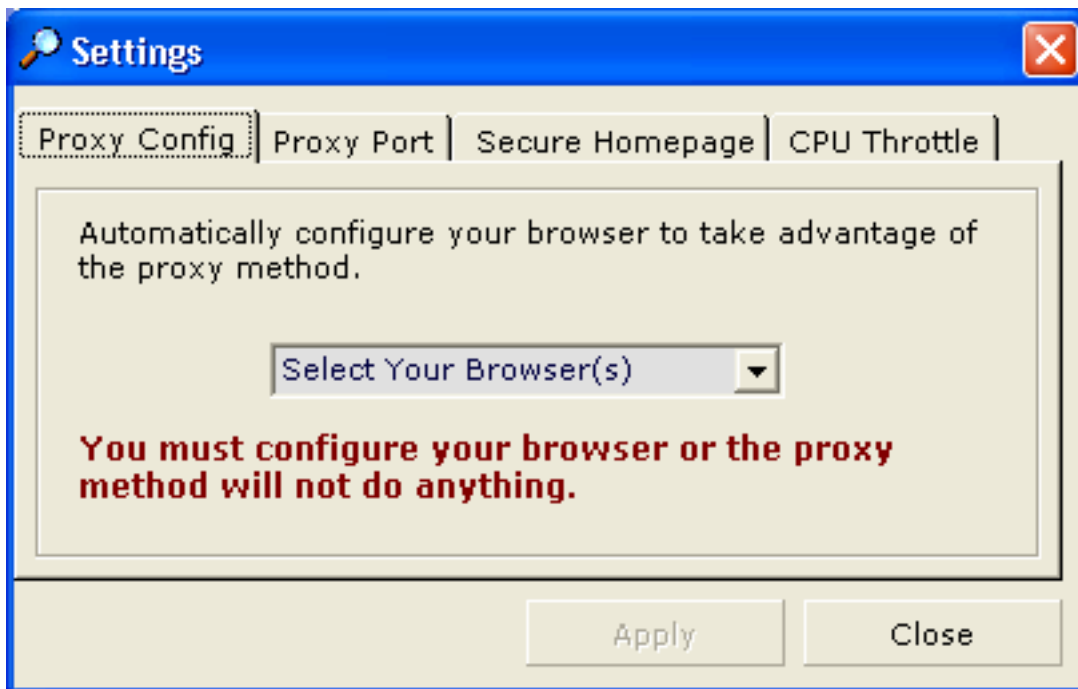
You can remove Parental Filter from the Control Panels Add/Remove Programs list. Doing this makes it harder to uninstall.

There was plenty of feedback concerning removing Parental Filter. As a security feature you could not remove Parental Filter unless you first shut it down. That security feature has since been removed as there seemed to be much frustration on how to achieve this and the problem was I believe due to a lack of real testing under Windows 98 which caused Parental Filter not to display an interface at all. Before going ahead and setting the option take some time to get comfortable with the interface, if you feel confident with Parental Filter you can use this security option. This option temporarily disables uninstalling Parental Filter by removing the icon from the Add/Remove programs. When you wish to uninstall Parental Filter just uncheck the option and the icon in the Control Panels Add/Remove Programs list should reappear again allowing you to uninstall.

Settings



Click the settings button to bring up the settings dialog box, all of the settings are also conveniently converged into one place. Look at the settings to get more customization out of Parental Filter.

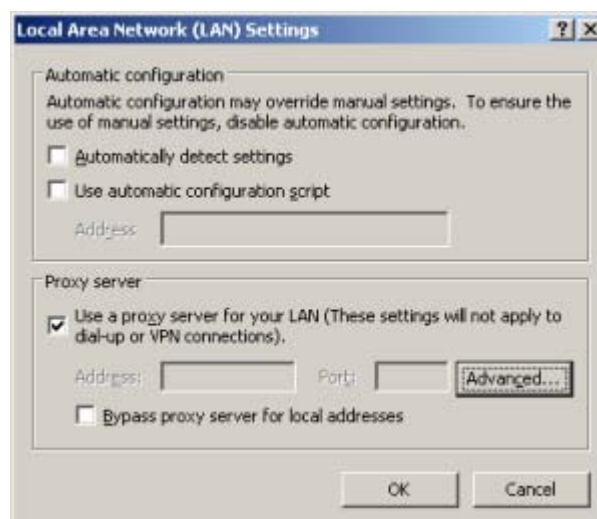


Much feedback was due to Parental Filter not working, your browser needs to be configured to use the proxy filter, and an attempt has been made to automatically configure your browser to use the proxy. This new feature tries to automatically configure a number of browsers. Just use the drop down combo box and select your browser. An alternative is to manually configure your browser.

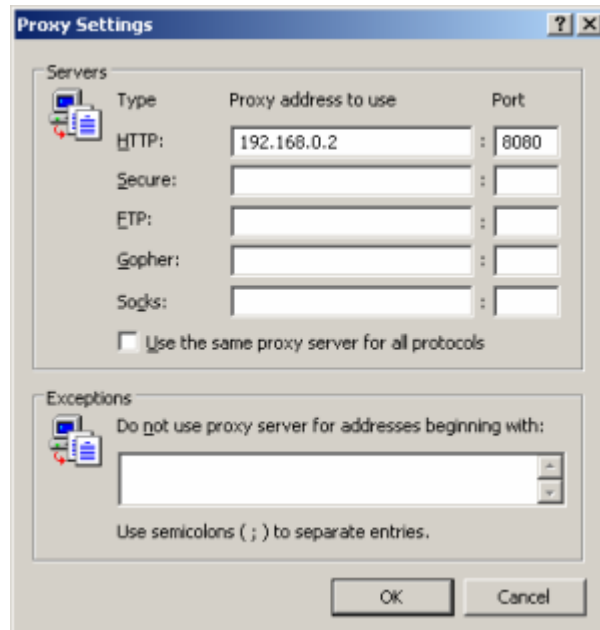
Configuring the HTTP Proxy [Internet Explorer]

Go to Start - Control Panel - Internet Options –

- 1) Choose the Connections Tab
- 2) Choose the LAN Settings button
- 3) At the proxy server tick Use a proxy server....



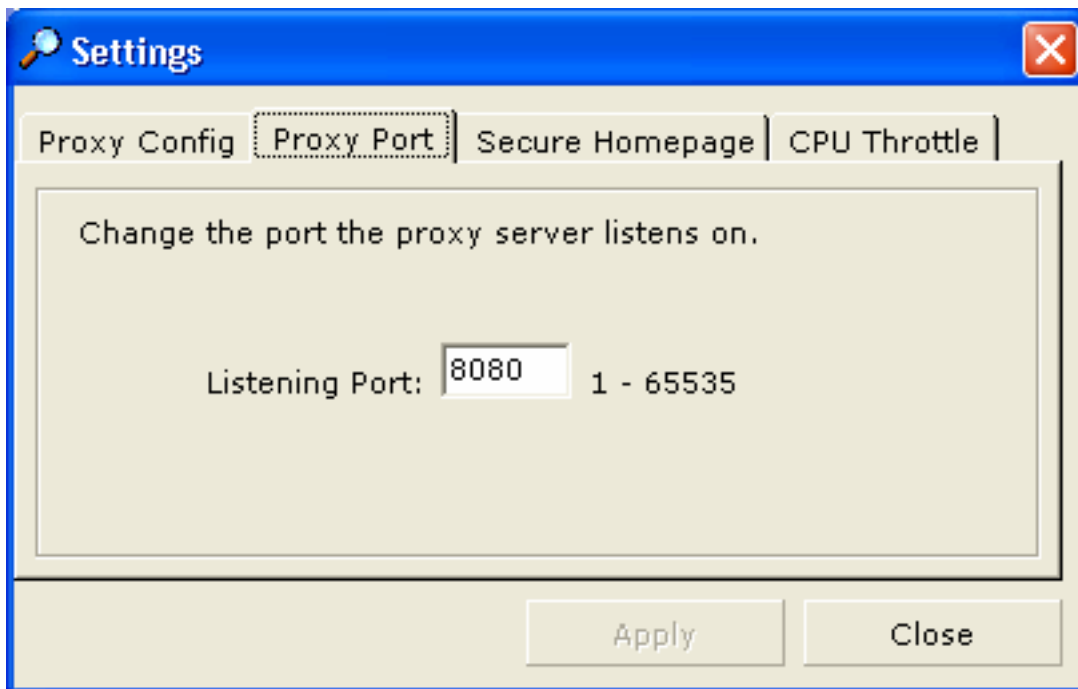
Click the advanced button



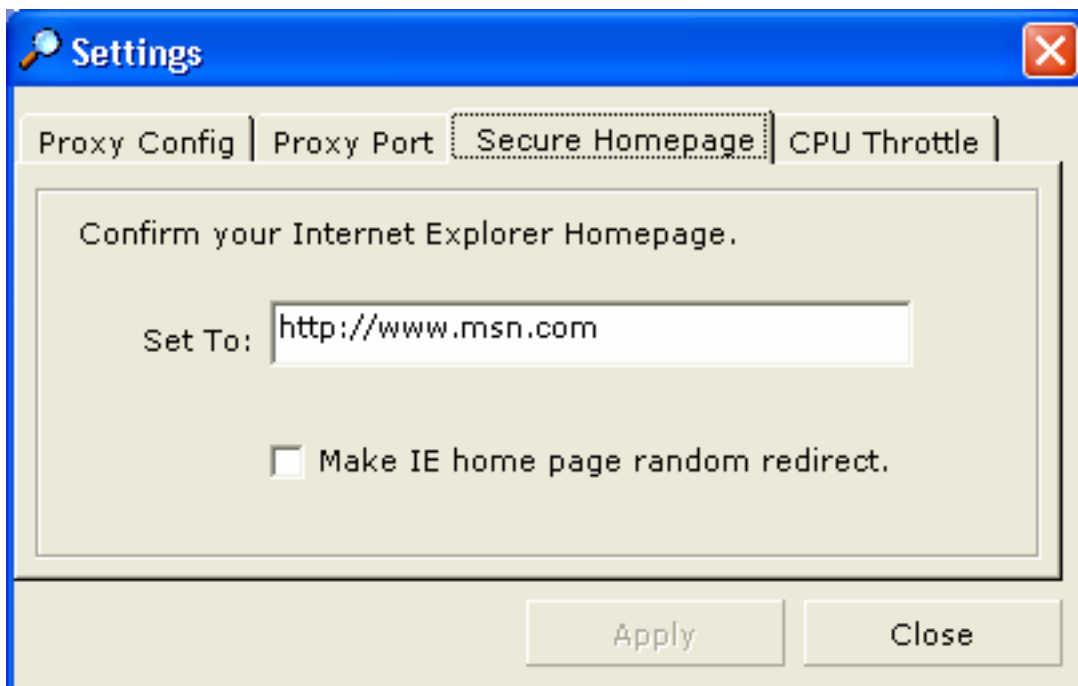
Fill out your IP and port, the default is 8080 but you can re-configure the port to your own liking. **You should use 127.0.0.1 for proxy address and 8080 for the port.**

That is all...

Then click the enable button in the Parental Filter options and this will turn the proxy on. All requests from clients will then go through the proxy server.
If you do not know your local IP address, Start the proxy and Parental Filter should display it under Local Internet Protocol Address otherwise use 127.0.0.1
Then you can configure the proxy via Internet Options or similar compared to your browser. One example is shown above.



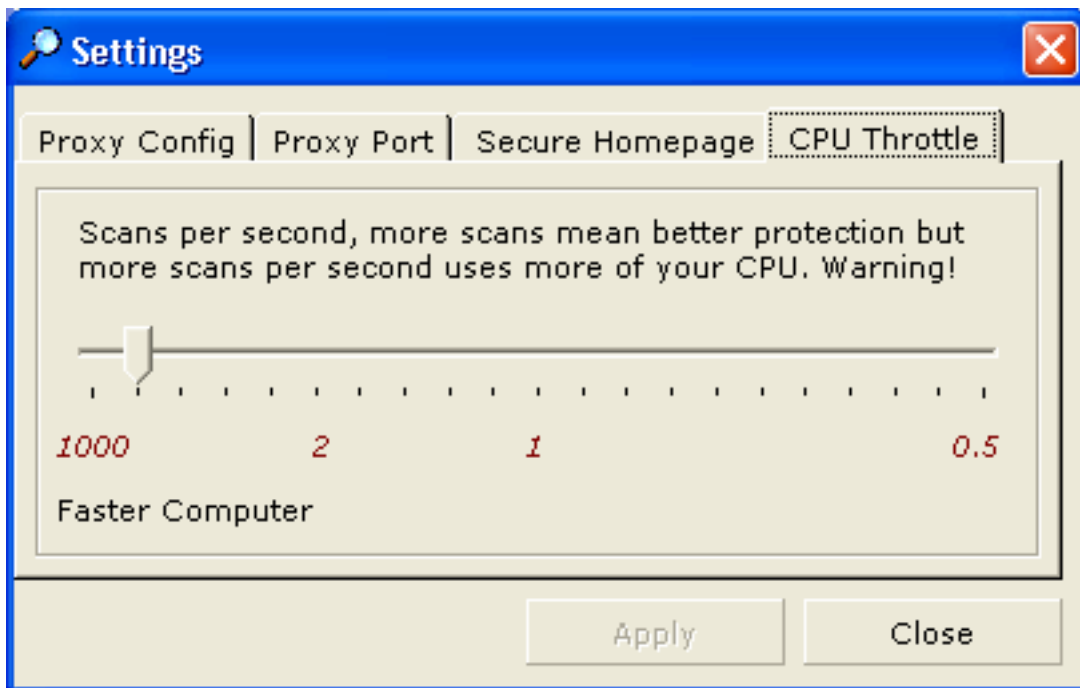
A proxy server listens on one port, the default is usually port 8080 but you may have special requirements and want to use a different port. Just enter the new port and change the port option in your browser to use the new port. Then click apply.



Setting the options for securing against scripts hijacking the Internet Explorer homepage are made here. When surfing I find several problems; one such problem is scripts in WebPages change your internet explorer start page. A webmaster might put an

automatic JavaScript or VBScript in a webpage so next time you start Internet Explorer you go directly to that webmasters page. This facility below stops that. Just enter the page you want to maintain and click the button named apply. The above example tries to keep Internet Explorers homepage at <http://www.msn.com>. Also make certain the option to enable this feature is checked off in the options list.

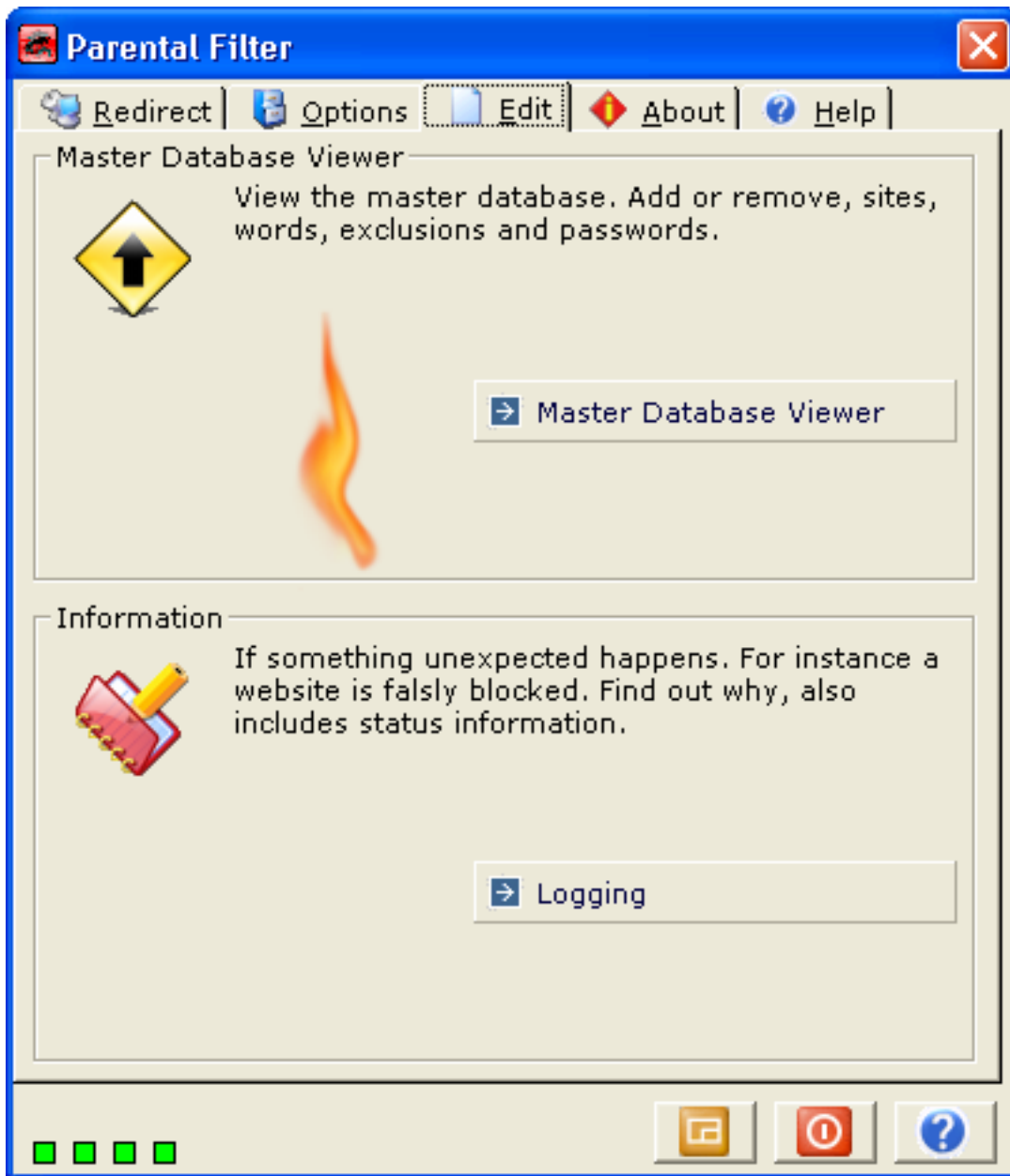
An additional option was to give Internet Explorer the capability of randomly redirecting. In the same fashion that redirection occurs, so does Internet Explorers start page. To try it, select the option and start Internet Explorer. Then click home a few times, you are redirected to a different page depending on the sites in the redirection list box.



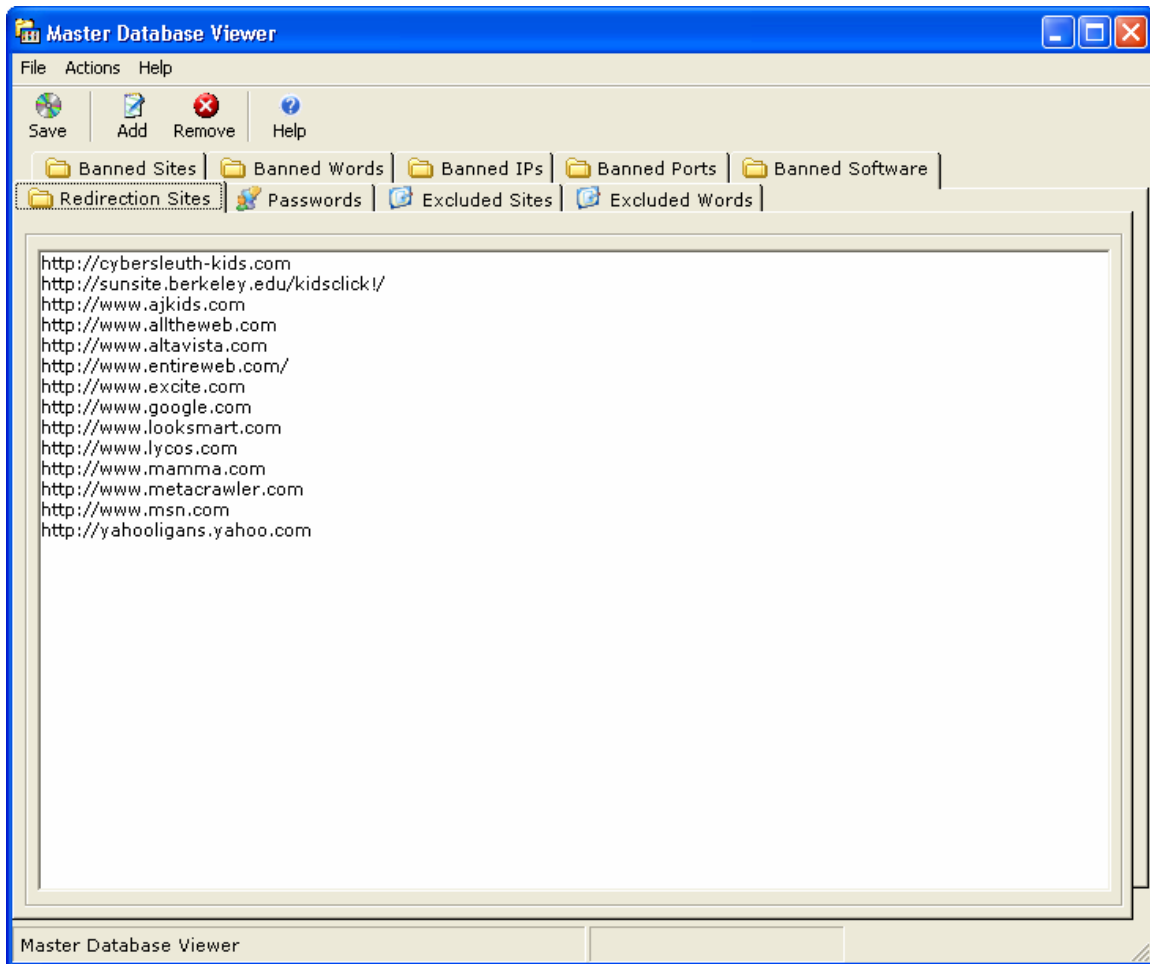
Monitor Method Only. You can adjust how much of your computer resources to allocate to Parental Filter. Give it more and protection is better yet at the cost of you precious computer resources. Give it too much and your computer can become unusable. The direct method can be CPU intensive.

Use the slider to select how many scans per second. Then click apply to set it. 2 to 5 scans per second is a good overall figure. Going left gives more scans per second, going right gives less scans per second. It is a little upside down.

Master Database Viewer



Parental Filter allows you to customize the definition. You have the ability to define what is allowed or disallowed. This facility is named the master database viewer; click the Master Database Viewer button to access the database.



The Master Database Viewer shows all the definitions in the database such as your redirections sites, passwords, excluded sites and words, your blocked sites, blocked words, banned IP's, ports, and your banned software.

It has been designed to make it as easy as possible; you are either adding a new entry or removing an existing one.

Navigating

You click the tab of choice and you will be presented with that the database entries of that tab. The above picture shows you all the redirection sites. You can add to that list or remove items from that list.

Click each button as an exercise to see what is available.

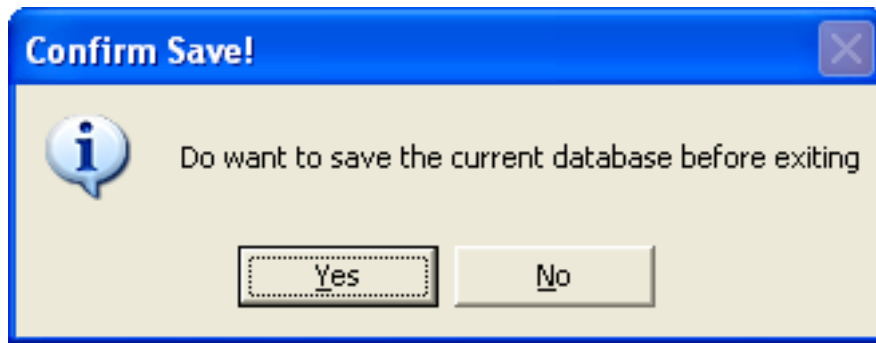
Saving the Database

As a general rule press the Save button before exiting. If you modify the database and exit you will be prompted by a dialog box. Performing an action does not end with an automatic save, allowing the master database viewer to exit and not save the changes

made. You must make the selection to save the database. Warning: There is no undo option.

Exiting the Database

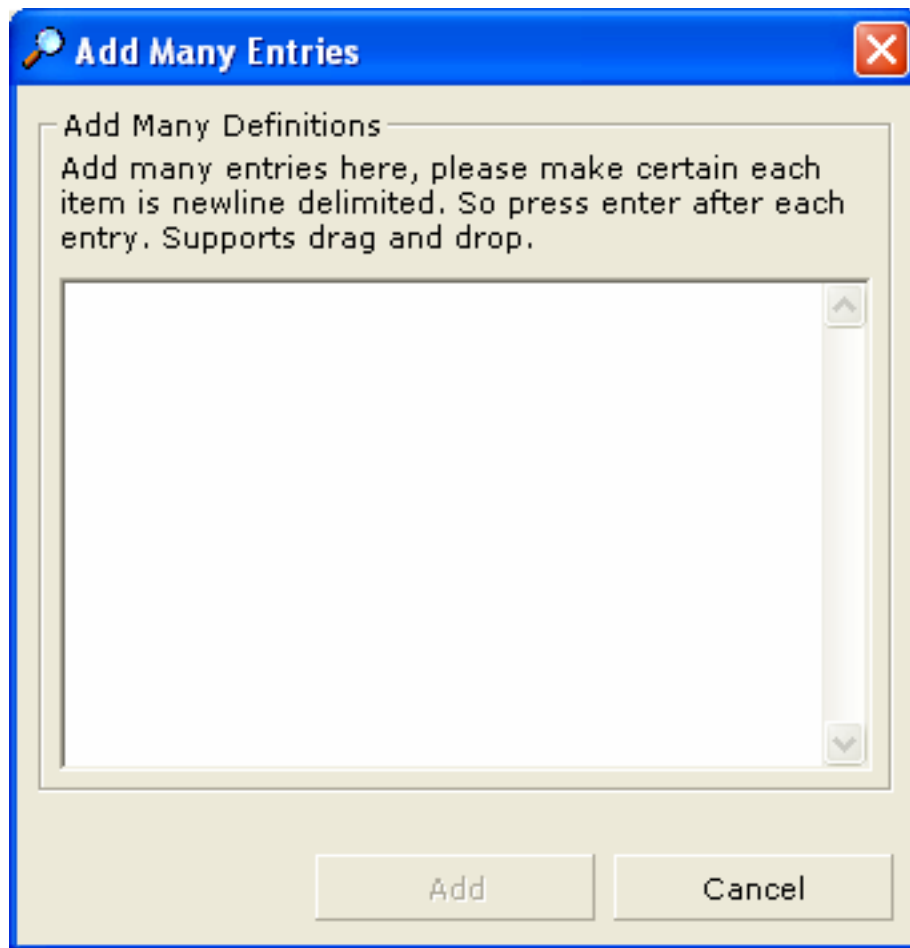
Clicking File - Exit will exit the Master Database Viewer; if you do not press save before exiting you will be prompted by the following message box. Both yes and no exit the database, but selecting yes saves the changes and selecting no does not.



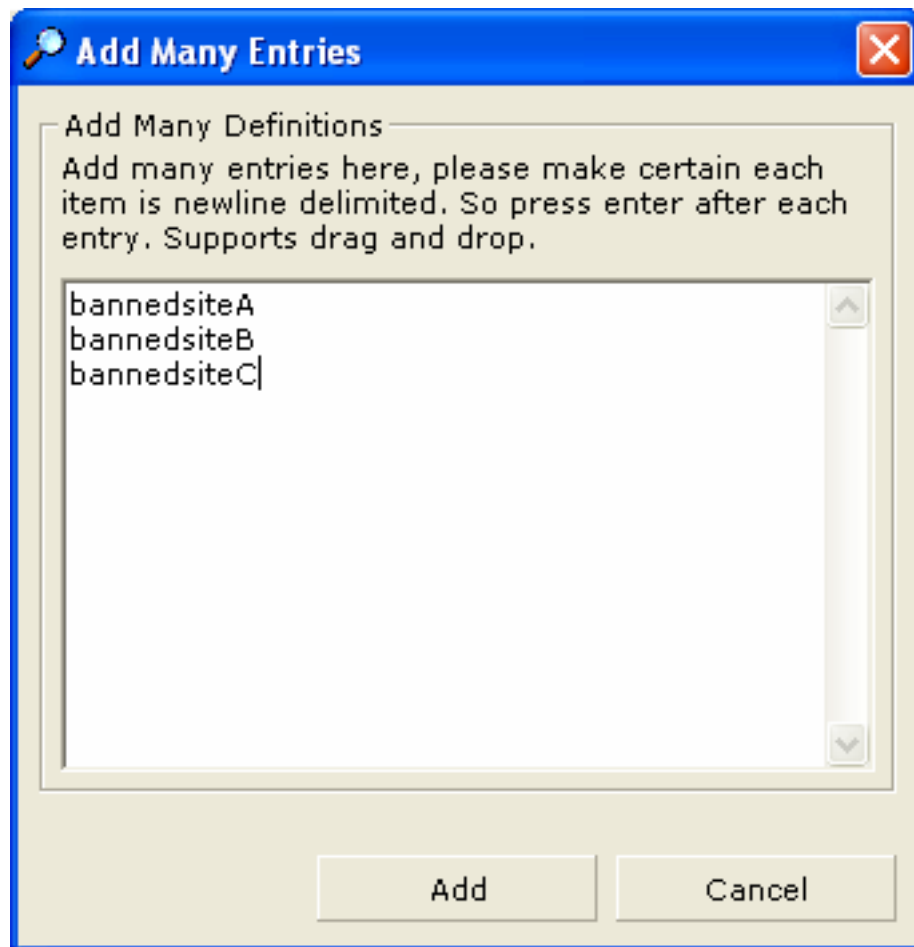
The database will revert to the state it was at prior to any changes if you do not select to save. **There is no auto-save.**

Add - Adding Many Entries

Clicking Add will show the following dialog.



Parental Filter prior to version 0.1.7 used to use the add or remove convention, it was limiting as the amount of editing one can do was singular. You could only add one definition or remove one definition at a time. The Master Database Viewer on the other hand allows batch adding and removing and really frees up the amount you can do. It is simple to copy and paste from a text file into the add textbox and add many entries. The text box supports drag and drop.



Above is an example of how to add many entries, enter the new definitions in the textbox each separate entry is delimited by a new line. One entry per line. Then click the Add button. Otherwise click cancel to abort. The new entries get added to the list and after you press save they become active. If you click cancel half way through or make an error, don't press save just exit and the changes will not be saved.

You can add new sites, words, emails, exclusions and passwords. This gives you the power over what you choose to allow or deny preferable for yourself or for a loved one. **Where the new entries are added depends on what tab is active.** That will be where the new entries will be placed. You can still select a different tab while the add dialog box is visible.

Words

When blocking words Parental Filter only needs the word to be in the sentence for it to activate. For example, there is no point blacklisting the words, porn and pornstars, porn will activate when pornstars is found. In this case watch out for words like butt, as the word button will also be blocked. As a precaution the last word filtered is displayed so while using the Internet if a word is banned that should not be banned you could remove it from the list or add an exclusion and allow the website. **As of version 0.1.9 the banned emails list has been merged with the banned sites and banned words list**

because a similar list was beginning to be formed. So add your Viagra emails to the banned word list.

No wildcards are required, wildcards are automatic. The word "sex" will be found in something as cryptic as "jgfb77SEX9834jnb". It is important to keep all definitions concise as extra scanning is needlessly performed when duplicates are apparent in the definitions. Extra scanning means performance degradation and delays. An example of a duplicate is porn and pornstars.

Sites

The correct format for adding new websites is **NOT** **http://www.bannedsite.com**, Parental Filter only needs banned site, adding the http:// or the www or the .com limits the blocking capabilities of Parental Filter. Once it is added to the list, the site becomes actively blocked. The theory on the format is that when you add, for example www.awebsite.com, the site can still be accessed by just typing http://awebsite.com, because a comparison of the two websites by Parental Filter will deem that they are different. If you want to ban a site like match.com (a singles site), but still want to view match.net (a sport site). You should type match.com, and in this case match.net will not be banned. In short, the more detailed the banned website phrase the more specific the ban. Except when you want to ban www.match.com, and the site can still be accessed by typing <http://match.com>.

Exclusions

I must state a word of caution, porn sites can be accessed through the guise of exclusions, there is a known issue with the word pass. Porn sites can get accessed under its guise. So do not add it. I was experimenting and found a several sites not being processed; the sites were verbally explicit but Parental Filter did nothing. Why? Even though there were plenty of words that should have triggered Parental Filter. The word "pass" was added to the exclusion list and was active. The word pass was also found in the site and those sites were then allowed to be viewed. So that is a paragraph of caution. The exclusion by website is far more conventional because it is more distinct.

Internet Protocols Address IP's

As of version 0.1.9 the direct method allows you to enter IP addresses, when these addresses are found in the header of the TCP/IP packet, they get blocked. Currently the amount of IPs Parental Filter 0.1.9 is equipped to hold is 32,768 **maximum**. Once this limit has been reached, it will be quite a simple exercise to extend the limit. Thus I say there is no limit to the amount of IP's you can add practically millions and with very little overhead.

Banned Ports

You can also add banned ports remote or local ports, this does have very use the filtering pornography it is more commonly a feature of firewalls and it an offshoot of the technology. You can add up to 32,768 remote ports and 32,768 local ports maximum.

Banned Software

As of Parental Filter 0.1.9 you can add title bar captions of software applications, this is mainly a method to disallow dialer type applications to be displayed or used. These applications are designed to make telephone calls at an incredibly high cost.

Redirection Sites

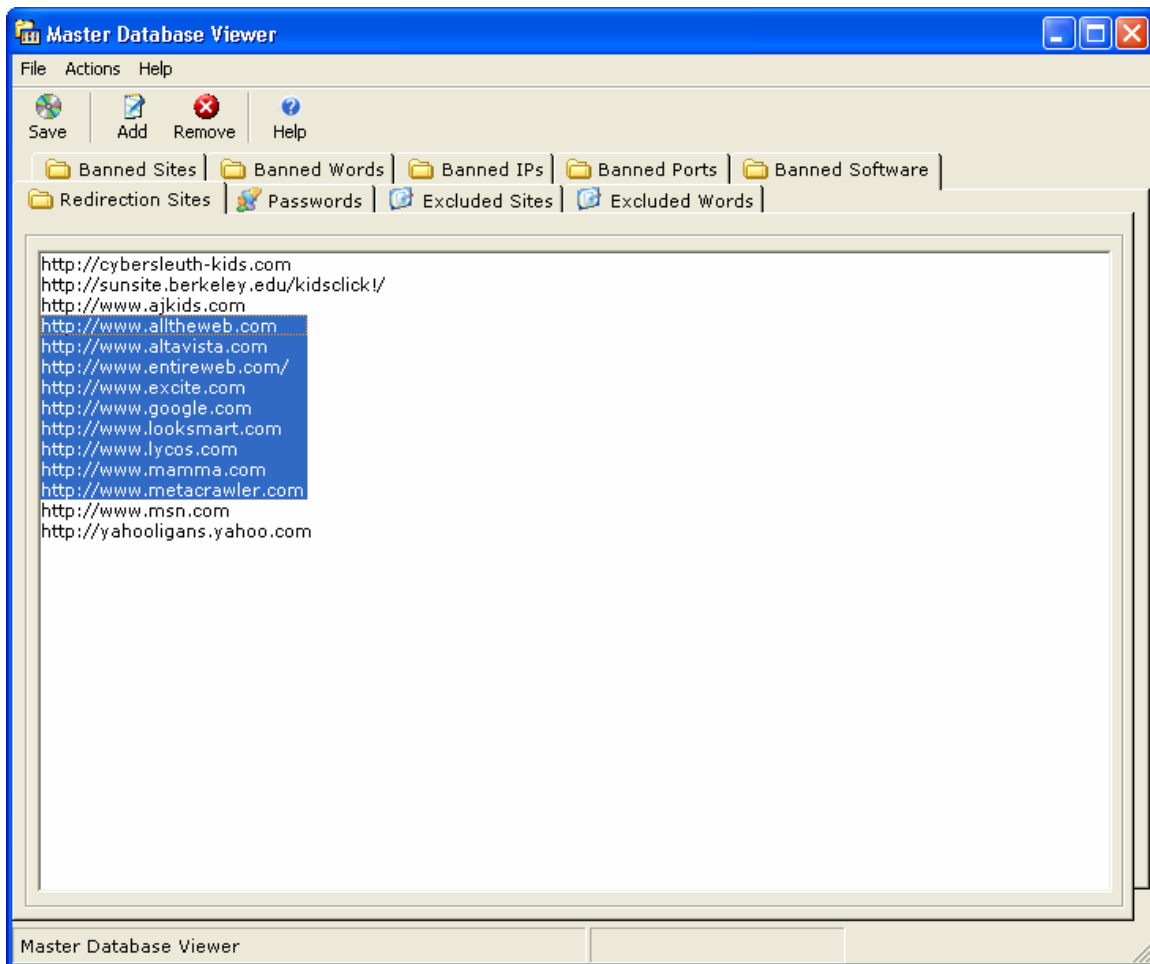
You can add or remove redirection sites with Master Database Viewer; these are the websites Parental Filter redirects to when a site is blocked.

Passwords

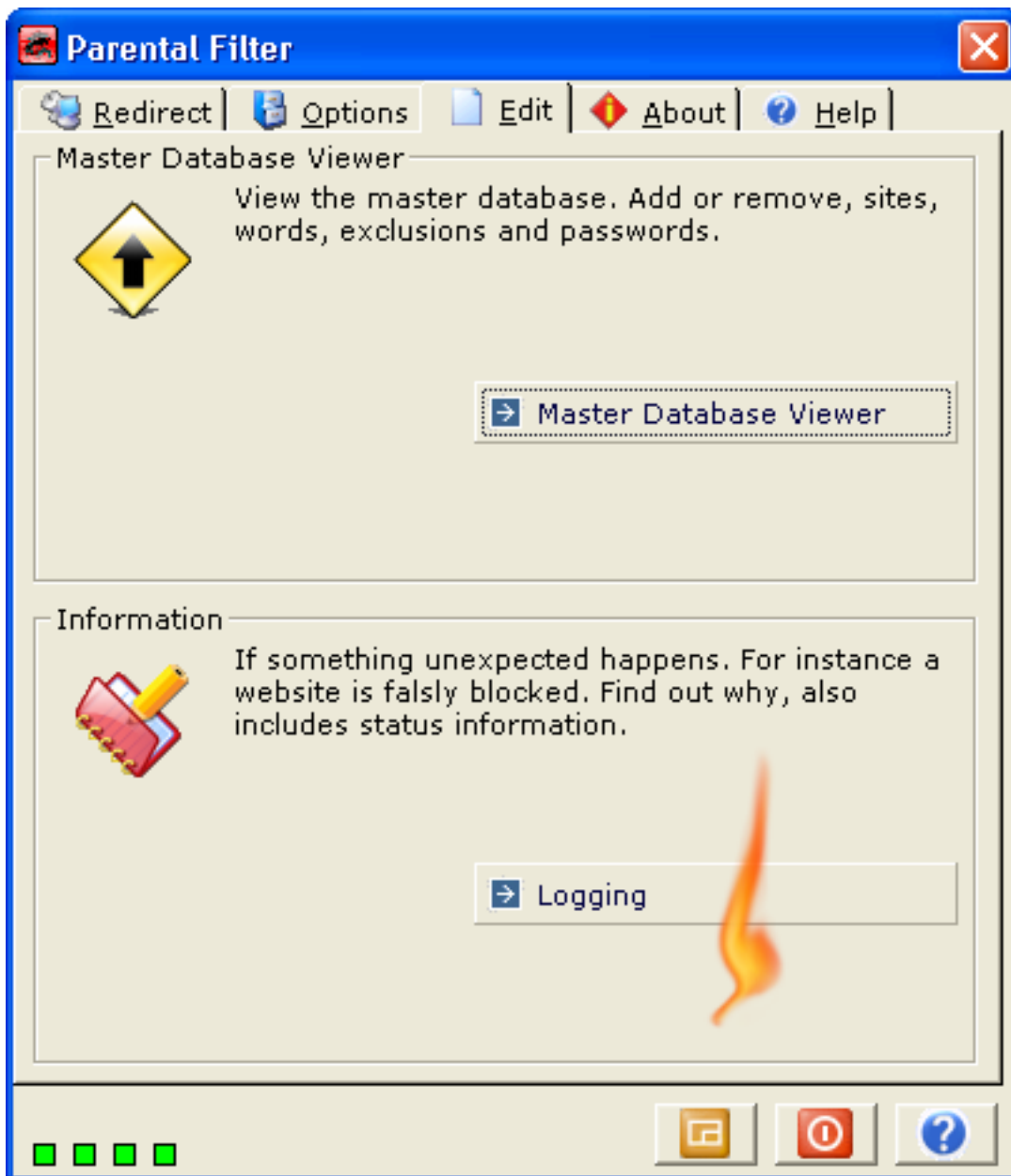
You can see the currently active passwords in the password tab. Add or remove new and old passwords.

Remove - Removing Many Entries

To remove many entries, click with your mouse, then hold and drag to select multiple items as illustrated in the picture below.



Then click the remove button, you then press save on the toolbar to save the changes.



Logging is another facet of many filters. The accepted method of the moment is communication possibly communication is a little misleading and broad. It is more interaction and involvement with your children with the result of creating maintaining mutual bonds, equality and belonging. So I am little sensitive about Parental Filter being used for spying and will design the logging appropriately. The display shall get more elaborate in the future but at this stage it just provides basic information

Logging supplies the following information.

Monitor Method Scan per second: 0.5 to 1000

Language, English, German, Spanish, Dutch, Italian, French

Proxy State, either on or off

Local IP Address [proxy]: 127.0.0.1 or otherwise

Local Listening Port [proxy]: 8080 or otherwise

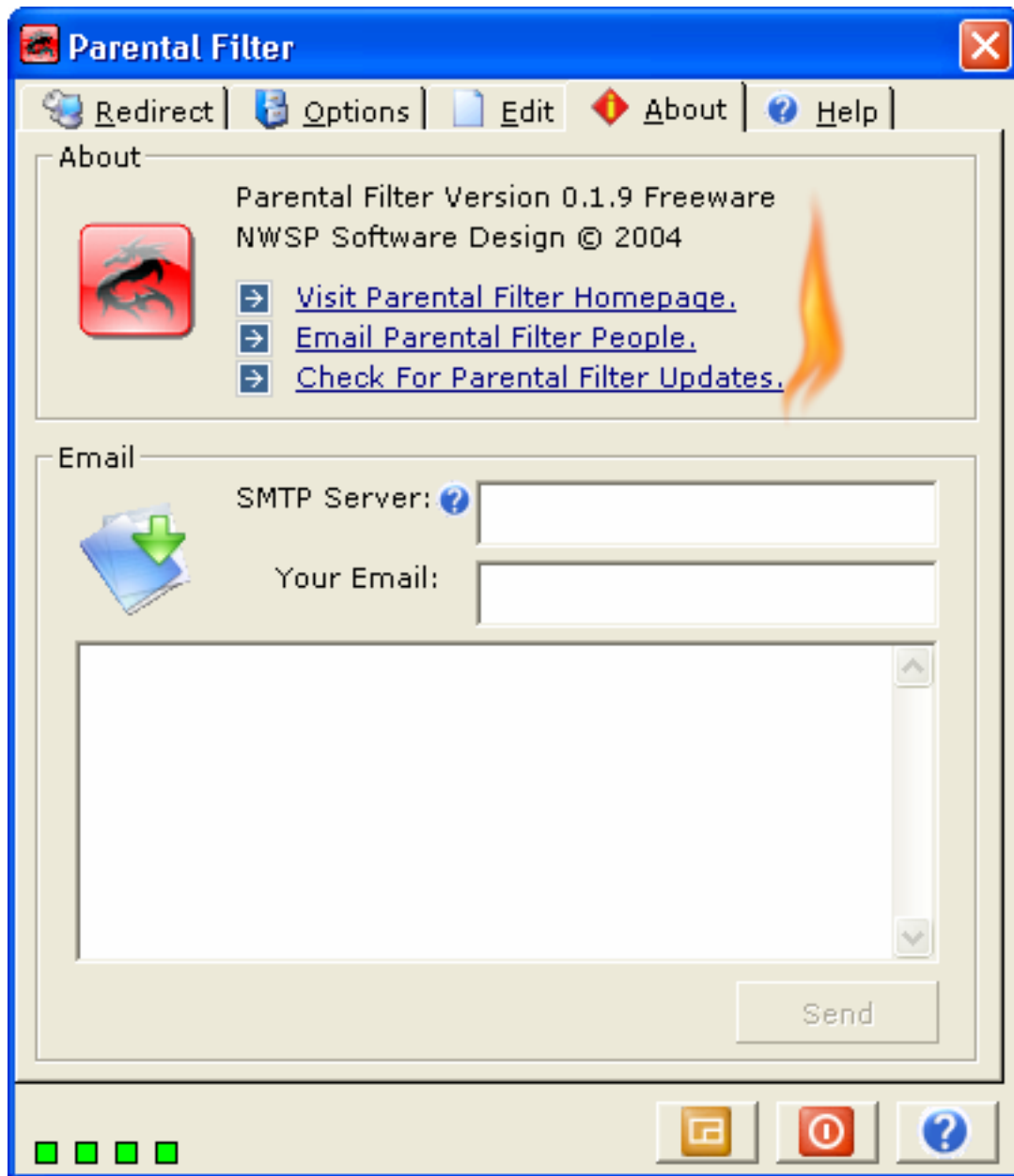
Last Term: one of a number of banned words or site e.g. xxx

Internet Explorer Homepage: Your Internet Explorer start page

More on Last Term

When a website is blocked, the phrase or name of the website that is blocked will appear in the above space provided. This will allow you to manage websites that falsely trigger Parental Filter by either removing those terms from the database, making those terms more descriptive or as of Version 0.1.7 adding an those terms to an exclusion list.

About - Update



The blue buttons above resemble webpage links and when your mouse goes over them they change color, they turn red. When you click on them they perform an action. Below is a brief description of each item.

Visit Parental Filter Homepage

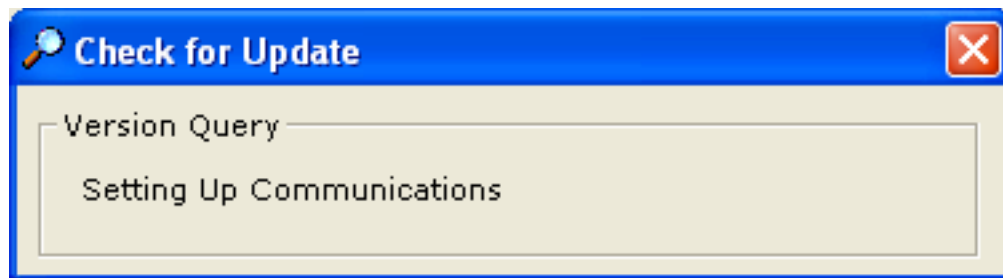
Click on this link to visit the Parental Filter homepage. The current homepage is <http://users.tpg.com.au/adslgoej>, you can always get the latest information about Parental Filter from the web address above.

Email Parental Filter People

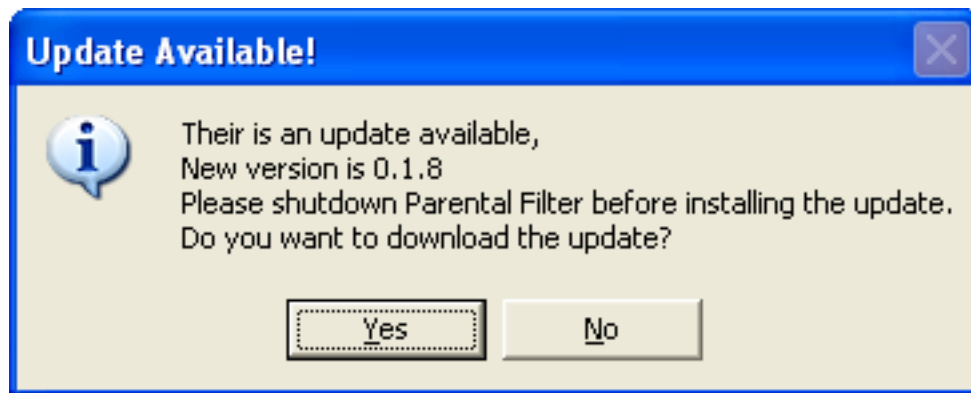
Click on this link to open your default email client and send NWSP some feedback. The current email for all communication is admintony@tpg.com.au

Check for Parental Filter Updates

Click on this link to check if a new version of Parental Filter is available.



This initiates communication with NWSP and checks if an update exists.



If there is an update, you can choose to either download it or otherwise.

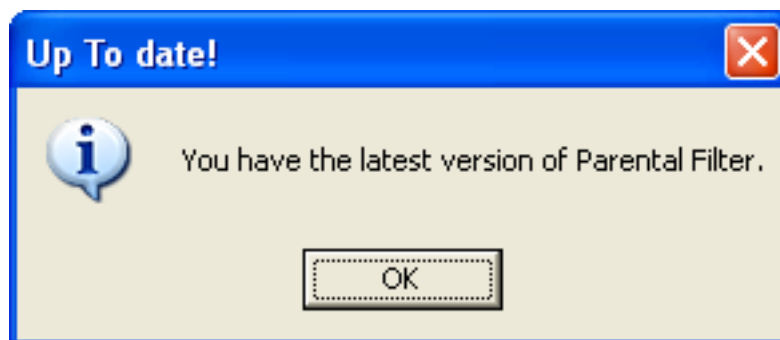
Remember to uninstall the old versions before installing the new version

The facts are you do not need to uninstall the old version before installing the new version; you can simply overwrite the old version by installing the new version. But show some care for some trouble free computing and uninstall the old version before installing the new version, also see if a folder resides in program file named Parental Filter and delete it before installing the new version.

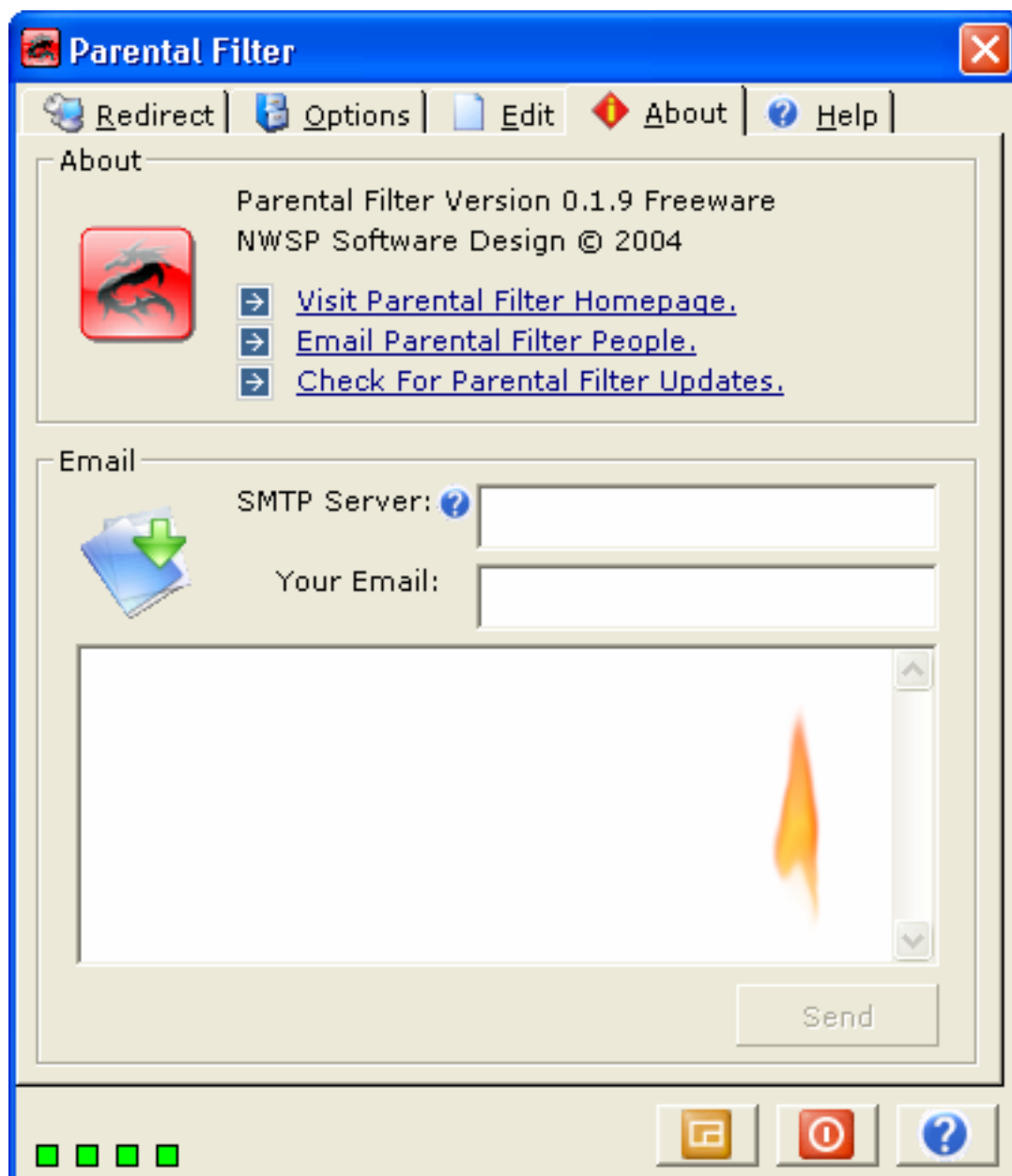
Backup the master database if you have made changes before you uninstall.

If you have made changes to the database back it up. A way to merge two databases will be formulated.

If your version of Parental Filter is up to date,



About - Email



An email facility has been provided in the application. Simply type your email address in the textbox provided. For the SMTP sever, if you do not know this, it is usually in this format. **SMTP.** , and then type what comes after @ in your email. For example, smtp.myemailprovider.com, considering my email address is myname@myemailprovider.com. Then click the send button. If you are unsure about this please click on the email link instead. An effort has been made to auto-fill the SMTP Server and your email address. If the auto fill is successful, just type your message in the textbox and click send.

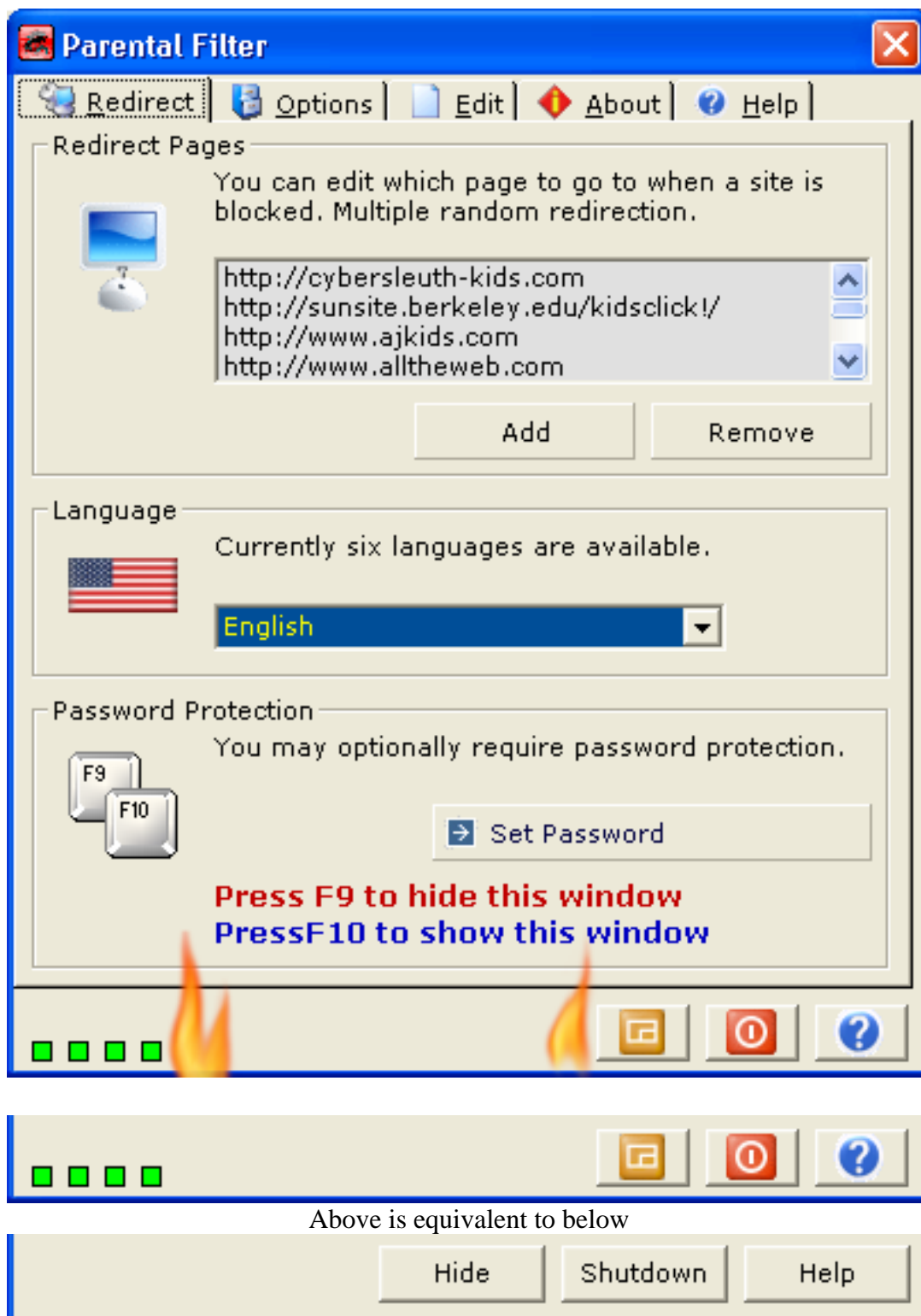
Parental Filter gets updated by feedback. You must announce the issue to get that issue resolved.

Ensure success resolution of an issue, tell us:

- Windows Version e.g. XP or 98
- Windows Language e.g. English French
- Browser & Version e.g. IE 6.0.3790.0
- Other Info e.g. using toolbar etc)

Feedback gets very vague without the above and communication breaks down causing frustration for all involved. So the information you can provide the better. **Consider sending screenshot.**

Hide, Shutdown & Help Buttons



Hide

Clicking on the Hide button simply makes Parental Filter invisible, you can also press **F9** to do this and then press **F10** to make Parental Filter reappear again.

Shutdown

Pressing this button does not shutdown windows, it will instead turn off Parental Filter and filtering will be disabled.

Help

Clicking the help button brings up this help.

The Four Green Squares

The four green squares are indicators,

The left most square - when green means that Parental Filter's monitor method is on, red means it is turned off.

The next square – when green means that Parental Filter's proxy method is on, red means it is turned off.

The next square – when green means that Parental Filter's direct method is on, red means it is turned off.

The right most square - when green means that Parental Filter's software filter is on, red means it is turned off.

The End



Welcome to Parental Filter



Welcome to Parental Filter



Welcome to Parental Filter



Welcome to Parental Filter