



Parental Filter

By

NWSP.

Documentation

© 2005 NWSP

Welcome to Parental Filter

Congratulations on choosing Parental Filter by NWSP, Parental Filter is designed to filter and block Internet content that may be unsuitable for you or people in your care. Parental Filter is a pornography blocker plain and simple.

- Parental Filter Links
- Homepage: [HTTP://www.ecommsec.com](http://www.ecommsec.com)
- Email: agpublic@ecommsec.com
- On-line Store: [HTTP://www.ecommsec.com/catalog](http://www.ecommsec.com/catalog)
- Donations: [HTTP://www.ecommsec.com/pf/donate](http://www.ecommsec.com/pf/donate)

NWSP SOFTWARE DESIGN LICENSE AGREEMENT

Parental Filter

IMPORTANT: PLEASE READ THE TERMS AND CONDITIONS OF THIS LICENSE AGREEMENT CAREFULLY BEFORE USING THE SOFTWARE. NWSP SOFTWARE DESIGN AND/OR ITS SUBSIDIARIES ("NWSP") IS WILLING TO LICENSE THE SOFTWARE TO YOU AS THE INDIVIDUAL, THE COMPANY, OR THE LEGAL ENTITY THAT WILL BE UTILIZING THE SOFTWARE (REFERENCED BELOW AS "YOU" OR "YOUR") ONLY ON THE CONDITION THAT YOU ACCEPT ALL OF THE TERMS OF THIS LICENSE AGREEMENT. THIS IS A LEGAL AND ENFORCEABLE CONTRACT BETWEEN YOU AND NWSP. BY OPENING THIS PACKAGE, BREAKING THE SEAL, CLICKING THE "ACCEPT", "YES" OR "NEXT" BUTTON OR OTHERWISE INDICATING ASSENT ELECTRONICALLY, OR LOADING THE SOFTWARE, YOU AGREE TO THE TERMS AND CONDITIONS OF THIS AGREEMENT. IF YOU DO NOT AGREE TO THESE TERMS AND CONDITIONS, CLICK THE "I DO NOT ACCEPT", "NO" OR "CANCEL" BUTTON OR OTHERWISE INDICATE REFUSAL, MAKE NO FURTHER USE OF THE SOFTWARE.

1. License:

The software and documentation that accompanies this license (collectively the "Software") is the property of NWSP, or its licensor's, and is protected by copyright law. While NWSP continues to own the Software, You will have certain rights to use the Software after Your acceptance of this license. This license governs any releases, revisions, or enhancements to the Software that NWSP may furnish to You. Except as may be modified by a NWSP license certificate, license coupon, or license key (each a

“License Module”) that accompanies, precedes, or follows this license, Your rights and obligations with respect to the use of this Software are as follows.

You may:

A. Use the Software, if you are financially able to make a donation to NWSP for the Software. You should do so. If the Software is used on a network, and You are financially able to make a donation to NWSP for the Software You should also do so for every client on the network.

You may not:

A. sub license, rent, or lease any portion of the Software; reverse engineer, decompile, disassemble, modify, make any attempt to discover the source code of the Software, or create derivative works from the Software;

B. use the Software as part of a facility management, timesharing, service provider, government agency or service bureau arrangement without explicit prior consent from NWSP;

C. use a previous version or copy of the Software after You have received a disk replacement set or an upgraded version. Upon upgrading the Software, all copies of the prior version must be destroyed;

D. use the Software, if You are financially able to make a donation to NWSP for the Software and have not made a donation to NWSP.

E. use the Software in any manner not authorized by this license; nor

F. use the Software in any manner that contradicts any additional restrictions set forth below.

2) Copyright.

The Software contains confidential information owned by NWSP Software Design and all copyright trademarks and other intellectual property rights in the Software are the exclusive property of NWSP Software Design.

Parental Filter is © Copyright NWSP 2005 All Rights Reserved.

Icons, artwork and other media in Parental Filter that are not the work of NWSP are the © Copyright All Rights Reserved of their respective owners/artists.

3) Disclaimer of Warranty.

THERE IS NO WARRANTY FOR THE SOFTWARE. ALL EXPRESS OR IMPLIED REPRESENTATIONS AND WARRANTIES, INCLUDING ANY IMPLIED WARRANTY OF MERCHANTABILITY, FITNESS FOR A PARTICULAR PURPOSE

OR NON-INFRINGEMENT, ARE HEREBY EXCLUDED TO FULLEST EXTENT PERMITTED BY LAW. NWSP DOES NOT WARRANT THAT THE OPERATION OF THE SOFTWARE WILL BE UNINTERRUPTED OR ERROR-FREE.

4) Limitation of Liability.

IN NO EVENT WILL NWSP BE LIABLE FOR ANY LOST REVENUE, PROFIT, OR DATA, OR FOR SPECIAL, INDIRECT, CONSEQUENTIAL, INCIDENTAL OR PUNITIVE DAMAGES HOWEVER CAUSED.

5) Term.

The term of the license granted herein shall be perpetual unless terminated by written notice by You or terminated by either party for material breach. Immediately upon termination of this license for any reason You shall cease using the Software in any form.

6) Distribution

NWSP grants permission for the use of the Software in magazines, cover mounts associated with the magazine and subscription Cd's or Dvd's associated with the magazine. NWSP grants permission for the Software to be installed on new or used computers by retailers. You may not profit from the individual sale of the Software. In issuing the Software, you must disclose to the recipient that the Software is free of charge or freeware. NWSP can revoke distribution permission at any time as NWSP deems necessary.

End of License Agreement

Informing Parents, Children

The three biggest issues on the Internet for children have to be

- exposure to pornography and other inappropriate material such as gambling
- chat room kidnappings
- money/bankcard scams via email or via identity theft.

1. Set the example!
2. Keep your computer situated in a visible place in your home, its role is then less personal, when the cat is away the mice will play. If when you appear, they get shocked and try and close off the window then thats a red flag. This phenomenon is called screen switching.
3. That face to face meetings with people they meet on-line is generally a no-no, **if a meeting has been arranged it should in the daytime in a public place with**

many witnesses and accompanied by parent(s), a large amount of people are reported missing each year. Odd phone calls can be indicator.

4. Everything they read on-line is necessarily the truth, there are many immature people who behave inappropriately, emails and offers that sound too good to be real are usually not real. Once such process is called phishing where an email is sent telling you to open a bank account so the phisher can send. Divulging information about yourself can lead to identity theft where people impersonate you and get credit cards in your name and make a mess. Don't copy what you have seen others do or don't do what people tell you to do. Passwords are secrets.
5. Spend time, supervise your children's Internet surfing, this has two benefits, it makes the computing experience more inclusive as a family process where inappropriate material should not be accepted and as a parent you are the only one who can really deliver what is inappropriate in the world in a way that benefits them. Ask your children about their on-line activities. Filtering software is only part of the solution.

Sites

[HTTP://www.protectkids.com/](http://www.protectkids.com/)

[HTTP://www.komando.com/kimskidscontract.html](http://www.komando.com/kimskidscontract.html)

[HTTP://www.fbi.gov/publications/pguide/pguidee.htm](http://www.fbi.gov/publications/pguide/pguidee.htm)

Credits

There are way too many people to thank and credit, Many thanks go to all the on-line community of programmers everywhere. A sample of names are , Vivek Patel, Jaime Muscatelli, Venkatesh K, Michael Frey, Patrick Moore (Zelda), Tom van Oorschot, Alex Allan, Randy Birch, |Plhlrlolzle|nl Entertainment - Joker, The Hand aka G.D. Sever, Gregory Kirk, Kim Komando, TechTv, Tripleman, Yahir Vite, Dirceu Veiga, Mike. Yazoo, Antonio Gatta for allowing me to display their fabulous icons. Many thanks to all those who have taken the time to email us with suggestions and improvements, you have become too many to mention but keep the feedback coming. Finally, many thanks go to all the software sites for adding Parental Filter and allowing it to be downloaded. Your efforts have been invaluable. Parental Filter would not be available without you. Thank you. Special thanks to all the language translations that have volunteered their time and effort. Saverio M, Elpidio Petrocchi, Laurent Buffolo, Sebastien Latour who has his name in the epic game Call of Duty credits.

System Requirements

- AMD/Intel® Pentium® processor 600MHz
- 64MB of Ram (128MB Recommended)
- 200MB of free hard-disk space
- Super VGA (800 x 600) or higher-resolution Monitor
- 4MB Graphic Card
- Microsoft® Windows® 95/98/NT4/ME/2000/XP/2003 (With all applicable updates provided by Windows Update services installed)
- Microsoft® Internet Explorer® 5
- MDAC 2.8 (latest version should auto-detect and install needed components automatically)
- JET 4 Service Pack 8 (latest version should auto-detect and install needed components automatically)
- Broadband Internet Connection

Note: Windows 95, 98, NT & Modem Dial-up

- Windows 95 is not supported but if you have the latest versions of the software system requirements you can try.
- Windows NT 3 is not supported but if you have the latest versions of the software system requirements you can try.
- Windows 98 is not supported. Parental Filter will function on Windows 98 if your system has all the required software components and is up to date.
- Windows NT 4 is not supported. Parental Filter will install on Windows 98 if your system has all the required software components and is up to date.
- Modem dial-up, not tested.

Quick Start

Install Parental Filter, view the installation guide which is part of this package for the procedure of installing, the installation is generic like you would most Windows software. You may see a dependency check and automatic update process.

Launch Parental Filter. Parental Filter then detects if you have all the required components need to run Parental Filter if not then those components will be downloaded and installed. Get your PC updated and then restart Parental Filter. Give it a second to start-up and Parental should run out of the box and ready to go to work.

As a test: Type xxx in a search engine and see if the browser windows gets redirected or shutdown. The test should be successful.

Go to the options tab and set Parental Filter to run at Windows start-up and optionally also select to keep it hidden. There are other options found there. Tweak and choose them to your liking. Select the other options to for example filter your email or register Parental Filter as a system service or have Parental Filter be password protected. There are approximately 20 options to choose from. Check out and use the options!

Parental Filter was made with the idea of being embedded. So when ready **Press F9** to hide Parental Filter and **Press F10** to show it again. You can Press F10 to hide the main window and F9 to show it again at anytime.

More advanced options and security schemes are discussed throughout this manual. Read the appropriate section in this manual to utilize the potential Parental Filter has to offer. We never intended Parental Filter to be a policing tool and NWSP stands against forcing censorship on people. Parental Filter provides and secures an Internet surfing experience that is free of objectionable content for the people you love and care about.

How This Document Is Organized

This document takes you through each feature of Parental Filter by sequentially addressing the user interface. Therefore beginning with the Redirect Tab and Redirect pages and then moving on to Language and then Security. From there, we shall sequentially move on to the Options Tab.

Redirect Pages - Many Redirections



When a website is blocked, a redirection to another website or a local page usually occurs, that is how most filters usually deal with the situation. It is a nice way to deal with the situation, another suggested option is to have no redirection occur at all and

the browser acts as if nothing happens or displays the “cannot display page” web-page, obviously this saves a little bandwidth. Parental Filter allows multiple redirection sites, one web address is randomly chosen from a list of many web addresses. The list box in the screen-shot above shows the active websites you can redirect to. You can add or remove those websites to redirect to your favorite websites.

As an idea you can also make custom pages, publish them on the web and redirect to them. The HTML file can reside on your hard-drive and you can specify that page to redirect to using the format file:///c:/mypage.txt.

Note: Note all supported browsers support locally found custom pages, in such a case simply publish the page on the web and redirect to it. **One redirection site must be active at all times.** One idea was to create a custom page of bible verses and when a page gets blocked a loved one would receive a bible story or something designed to strengthen and promote well being.

As of version 0.1.4 all offending windows are redirected, even banned words. As of version 0.1.6 **Mozilla** has full redirection capabilities. If you use tabbed browsing in Mozilla the monitor method is not able to redirect and the offending window is closed. Tabbed browsing in Mozilla can be toggled on or off in the Mozilla options.

Opera also has full redirection capabilities. As for Netscape, offending windows are closed and a new default browser window is opened. We are still working on Netscape; someone must have cut the communication lines down at Netscape HQ. Supported browsers are listed in the table below. As of version 0.1.7 Netcaptor is also supported. As of version 0.2.1 Slimbrowser and DeepNet browser are supported. If you use a different browser you can obtain support simply by sending NWSP an email with the browser name and a download link.

Browser	Web Redirection	Local Redirection
Internet Explorer	Yes	Yes
Netscape	No	No
Opera	Yes	Yes
Mozilla	Yes	Yes
MyIE2	Yes	Yes
Avant Browser	Yes	Yes
Netcaptor	Yes	Yes
Real Player Browser	Yes [limited]	No

DeepNet Browser	No	No
SlimBrowser	No	No

The above browsers should all perform an action when Parental Filter is triggered by an offending word or site, if they do not, then something has gone wrong.

SBCBrowser and AOLBrowser are browsers that seem to be only available to persons who subscribe to their Internet services. I do not and cannot obtain support for these browsers. Although read on...

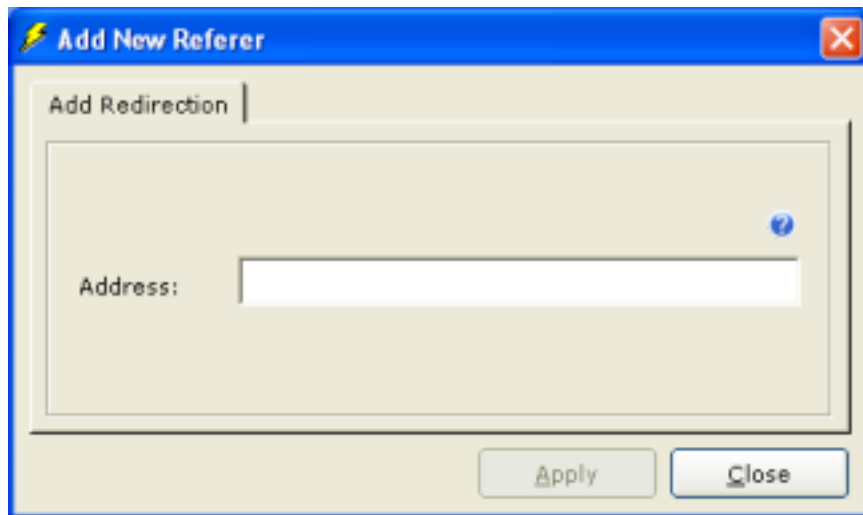
Parental Filter is equipped with a proxy server that is not browser specific; it should work regardless of the browser used. The proxy server can be used locally on one computer or in a local area network (LAN). The proxy could also be used as an added line of defense to support the monitoring method even locally.

The direct method is also non-browser specific and should work with all browsers including Netscape but at this stage there are only 120,000 sites listed and we need to add about 460,000 more.

- Monitor Method - Will utilize random redirection.
- Proxy Method – Version 0.22 improved redirection only redirects to msn.com.
- Direct Method - does not redirect.

Add a New Redirection Site

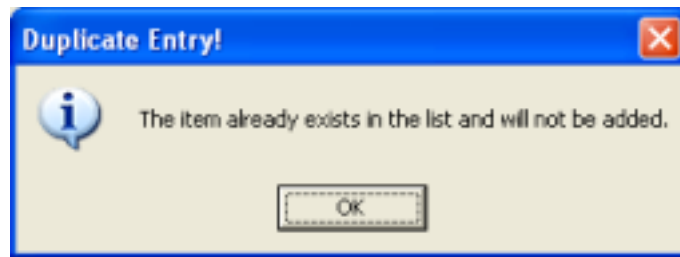
You can add a new website to redirect to when a website gets blocked and if the browser is able to be redirected. This will allow you to choose your favorite websites. Clicking on the Add button brings up the following display.



Enter a new website name in the text box, the URL must be active, that is you must be able to reach the website from Internet Explorer or your Internet browsing software. Otherwise the "can not find server" error page will appear instead, which may be a desirable effect. The correct format is <http://www.myfavorite.com>, exchange myfavorite with your own favorite such as <http://www.yahoo.com>. After this, click the add button, the website is then added to the list box and is now active and ready to use. So when a website is blocked the page you will see is <http://www.yourfavourite.com>.

Adding such values as for example <file:///C:/mypage.html> allows you to redirect to a custom web page that you can make if you are HTML savvy. You can publish your own site on the web and redirect to that site also, the choices are up to you.

You will only find one possible message box,

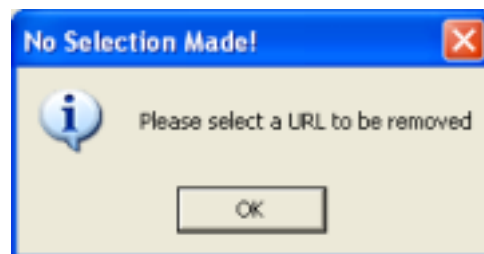


The above picture states that the site you are trying to enter is already entered and it is a duplicate. The site is not added and you get this message box instead telling the site is already active. Perhaps you or some one else entered the site earlier and forgot.

Remove A Redirection Site

You can remove active redirection websites simply by clicking the website address you want to remove from the list box and then clicking the remove button. You will not see the website in the list box and know it has been removed.

You can add and remove websites as you please, but please always keep one website available for redirection. This ensures one option can always be selected.



If you see the above message box, it means that you have not selected a website to be removed. In this case select an item from the list box by clicking on it and it should then be marked in blue or your desktop color, you can then click the Remove button and the site shall be removed.

Some browsers reject the `search_script.htm` generated to perform the redirection. You can right click on the yellow strip that appears in your browser and

allow it. The search_script.htm is open source and viewable in the Parental Filter installation directory.

Language



They are currently 6 languages available with a varying degree of competency. They are English, Spanish, French, Italian, German and Dutch. I am able to translate

Parental Filter into other languages with the aid of such sites as <http://www.freetranslation.com>, although the translation from these sites can be at times incorrect. Translating Parental Filter is a work in progress and some aspects of the translation are not completely finished prior to a version release. Considering the amount of languages that exist, we'll get around to doing it later. You can offer your services or request your preferred language.

Unicode Support is an ongoing issue and efforts are being made to give Parental Filter Unicode support. Parental Filter 0.24 will hopefully have improved language support. A translation editor may also be provided in the future to give people who use Parental Filter an easy way to translate Parental Filter into their preferred language and even submit that work for the benefit of others. As of version 0.2 language.lib file has been replaced with Lang.mdb and is fully editable as Microsoft Office Access Database.

To select a language simply click on the arrow on the combo box and a list should drop down, allowing you to choose a different language. Once selected, the icon and interface should change to your preferred language and remain saved automatically. Language selection is user account specific. So if one person A is Spanish and logs in to their account, Parental Filter will appear in Spanish. Person B logs in and Parental Filter appears in their preferred Language.

Security



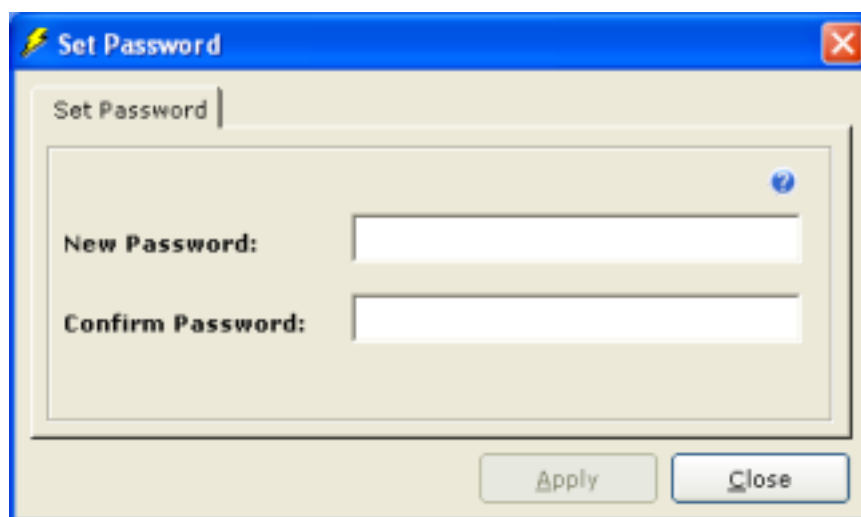
As a light security precaution you can hide Parental Filter while it is working. **Pressing F9** on your keyboard will make Parental Filter vanish, although it is still

filtering. When you want to make Parental Filter reappear once again, **press F10 key** on your keyboard. Either keep F10 pressed or press it a few times if it gets sticky. Keep the system tray icon handy until you are certain that you can rely on F9 and F10. Then you can remove the system tray icon from the options and have Parental Filter remain totally invisible.

Sexuality is an important issue for people; the young require good advice and require a means to build good character in the face of the adversity that biological changes bring. Sexuality can really mess up peoples lives. I was reading a book a while ago and came across Jesus teaching in self mastery. It is a great teaching and something to seek. It is too bad that high school religious studies do not focus more, if at all on self mastery, and the importance of showing love. To many times in our lives we are left to our own devices and do not understand that love is the way.

In version 0.1.5 a secret delay was implemented when pressing F10, it has been removed due to responsiveness in 0.1.7. Security may be of concern to you and since version 0.1.5 Parental Filter has been equipped with a password protection feature, security is an ongoing issue and future updates will focus much more on this area.

Set Password - Password Protect Parental Filter



Clicking the Set Password button brings up this dialog box. The dialog box allows you to set a password, when active this feature makes Parental Filters options more

secure. A password will then be required to access Parental Filters options. Type a secret password in the text box provided and then type it again to confirm it is correct. Next click the Apply button to set the password and make the password active. Note: Setting a password is optional and their no password retrieval option.

Law enforcement as a method of dealing with something you do not want others to do, (law enforcement may not necessarily uphold justice) fails. Law enforcement is just not that effective; it is yet another aspect of an antiquated system. Neither is it effective or beneficial in the family. The bottom of the mainstream is mediocrity, and an antiquated system produces too many criminals. Therefore setting a password is optional in favor of active parental involvement.



Caution should be observed here. Parental Filter still appears as a process and can be exited that way in extreme circumstances. Unless you know otherwise there is no other way of exiting Parental Filter.

So now when you press F10 to show Parental Filter you get a dialog box asking you to enter a password instead of the Parental Filter main screen.



More advanced options allow you to even hide the password screen so you just type your password anytime on your keyboard and Parental Filter appears. The second

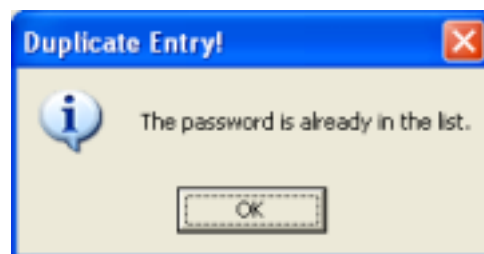
Tab has the options where you can tick whether to hide the password screen or otherwise, more on that later.

You may encounter the screen below when adding passwords.



It states that the two passwords typed are not identical. The reason you type two passwords is to minimize errors. So you do not mistype your password and are locked out. Simply retype both passwords and make certain they are identical.

You may encounter the screen below when adding passwords.



It states that the password entered already exists and there is no need to add it again. You use the **Master Database Viewer** to edit the list of passwords. It is available when you click the Master Database Viewer button in the Edit tab.

Four Levels of Security

There are three levels of security.

1st Level of Security

Pressing F9 will hide Parental Filter, pressing the F10 key un-hides Parental Filter. You can also press F10 if Parental Filter is visible but hidden under other windows. Parental Filter will then appear on top of other windows. Although some windows can be dominant and do not allow this.

So simply press F9 to hide Parental Filter and press F10 to make it reappear

2nd Level of Security

With a password set. Pressing F10 will reveal the Parental Filter Password dialog as show below.

If you type an incorrect password the password window will display an X, to show the password was incorrect. If you take more than 30 seconds to type a password the password window will disappear which is an added feature for usage at unattended public terminals. Pressing F9 will still make Parental Filter disappear.

The dialog looks like the picture below.



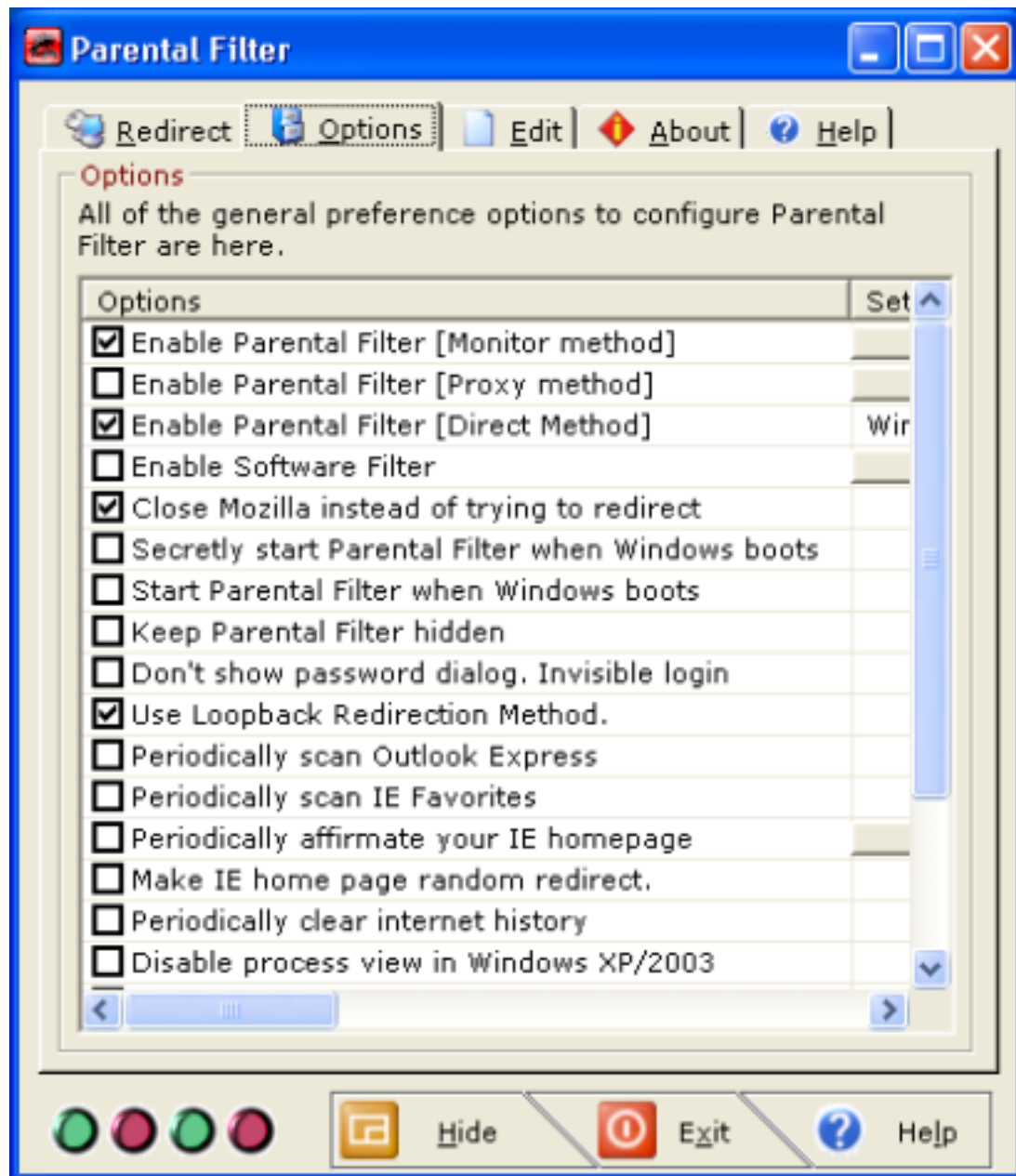
3rd Level of Security

With a password set. Have no window appear at all. Just type the password as if the Parental Filter dialog box were visible and Parental Filter should magically appear. The option to do this is available in the Options Tab under Options. It is the 5th option. So pressing F10 will no longer do anything.

4th Level of Security

Install Parental Filter as a system service. It is a new option in the Option tab more on this later. You can use the options available in Control Panel - Administrative Tools – Services for better security such as allowing Parental Filter to interact with the desktop, what to do in case of failure. You also need to restrict access to the Services for improved security.

Options



Above is a picture showing all of the options that Parental Filter has to offer, the options conveniently converge into one place. Look at the options to get more potential

out of Parental Filter. Simply click the check box to activate an option or click it again to de-activate an option.

Select the check boxes as you prefer. To the right are buttons that when clicked display the settings options for the appropriate option. Look at the settings to get more customization out of Parental Filter. To the far right are brief descriptions of what each option does, not displayed in the above picture. You must scroll across to see them.

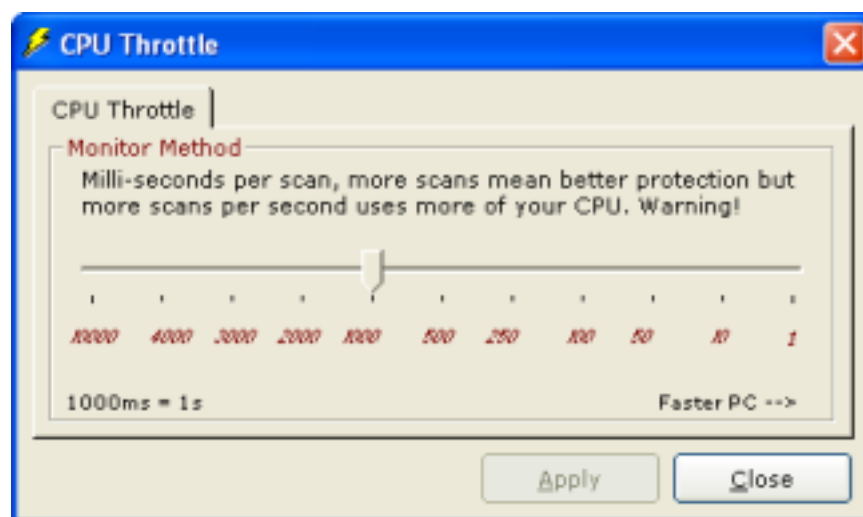
Below is a brief description of what each option does.

Enable Parental Filter [Monitoring Method]

At times you may need to enable or disable website filtering. When this check box is not ticked Parental Filter's monitoring method becomes disabled and no filtering occurs. Keep this box ticked to ensure constant filtering. As of Parental Filter 0.1.8 this option is now savable, this means you may forget it so be sure the 1st indicator flashes green, which signifies Parental Filter is active. This option does not disable the proxy filter, the next option does that.

The monitor method works by monitoring the browser window such as captions in a various amount of ways to try and find out what website is currently displayed. If it detects something wrong it redirects the browser to a safer page.

Clicking the settings button for this option,



Monitor Method Only. You can adjust how much of your computer resources to allocate to Parental Filter. Give it more and protection is better yet at the cost of you

precious computer resources. Give it too much and your computer can become unusable. The monitor method can be CPU intensive.

Use the slider to select how many scans per second. Then click apply to set it. 2 to 5 scans per second is a good overall figure. Going right gives less milli-second delay per scans.

Enable Parental Filter [Proxy Method]

The proxy method is an additional method of filtering and is a far superior method of filtering. Better than the monitoring method. It works by acting as intermediate between the web and your PC or your network, allowing sampling of the header and source of the web page. Check and uncheck the check box to start or stop the proxy. **Note: you must configure the browser to use the proxy.** You cannot use the proxy method without telling your browser to use it. Configuration examples are given in the proxy section.

A proxy server is a server that acts as an intermediary between a workstation user and the Internet so that the enterprise can ensure security, administrative control, and caching service. A proxy server is associated with or part of a gateway server that separates the enterprise network from the outside network and a firewall server that protects the enterprise network from outside intrusion.

A proxy server receives a request for an Internet service (such as a Web page request) from a user. **If it passes filtering requirements**, the proxy server, assuming it is also a cache server, looks in its local cache of previously downloaded Web pages. If it finds the page, it returns it to the user without needing to forward the request to the Internet. If the page is not in the cache, the proxy server, acting as a client on behalf of the user, uses one of its own IP addresses to request the page from the server out on the Internet. When the page is returned, the proxy server relates it to the original request and forwards it on to the user.

To the user, the proxy server is invisible; all Internet requests and returned responses appear to be directly with the addressed Internet server. (The proxy is not quite invisible; its IP address has to be specified as a configuration option to the browser or other protocol program.)

An advantage of a proxy server is that its cache can serve all users. If one or more Internet sites are frequently requested, these are likely to be in the proxy's cache, which

will improve user response time. In fact, there are special servers called cache servers. A proxy can also do logging.

The functions of proxy, firewall, and caching can be in separate server programs or combined in a single package. Different server programs can be in different computers. For example, a proxy server may in the same machine with a firewall server or it may be on a separate server and forward requests through the firewall.

http://whatis.techtarget.com/definition/0,,sid9_gci212840,00.html

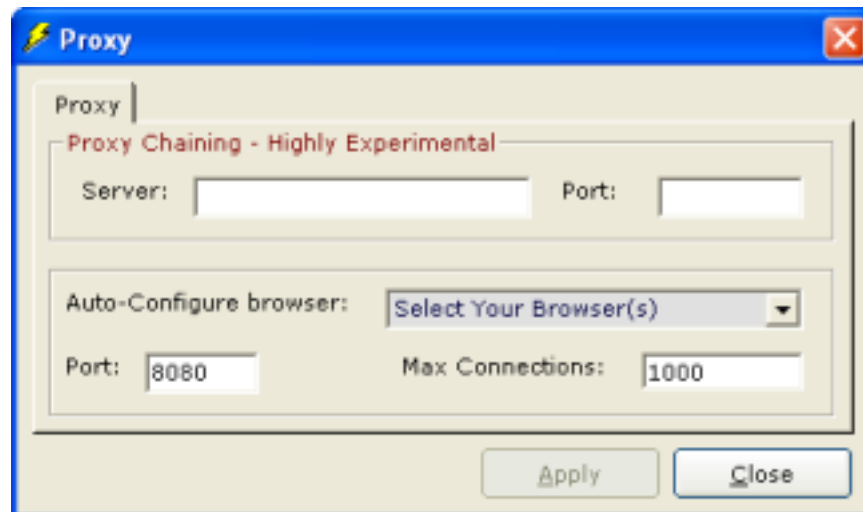
Parental Filter is equipped with a proxy server, and the get/post header of every HTTP request is sampled, if a banned term is found, the header is edit and connection is made with msn.com instead.

This method of filtering is fully browser independent which means all browsers that can be configured to use the Parental Filter proxy are supported. The proxy server can be used locally or in a local area network environment. Not only that, it is the most resource friendly and secure way of filtering. This is mainly because the proxy server resides away from client computers on a physically protected server and only requires one copy as well as not actively monitoring all of the time. We are working on a little tool to disable proxy tampering at the client computer.

The proxy is the next best way of filtering as the direct method is better. The Parental Filter proxy is designed for the SOHO and can handle a user specified amount of simultaneous requests. Theoretically over 2 billion but practically far less. It has not been fully tested so I would not recommend it if your application is mission critical or if you are not in a relaxed SOHO environment. If you find the proxy works well under other conditions you are welcome to use it. Your tests and feedback are welcome.

As previously stated the proxy can also be used on the computer it is installed on or locally, this is great for providing an extra level of protection, protection if your browser is not supported or if the monitor method fails in your situation. Below is how to configure the proxy and make use of it.

Clicking the settings button for this option,



Proxy chaining is a new feature in Version 0.22 where one proxy communicates with another proxy. A proxy chain is used when an ISP requires a proxy. Proxy Chaining cannot and should not be recommended in networks, it makes a system overly complex which can raise technical issues. If you feel it works for you, then you are welcome to use it.

Simply type the proxy of you ISP in the server text box, e.g. proxy.myisp.com and specify the port e.g. 80. Parental Filter's proxy will now communicate with this proxy instead on the Internet.

Much feedback was due to Parental Filter not working, your browser needs to be configured to use the proxy filter and you must de-activate your browser from trying to find the proxy when you are not using the proxy. An attempt has been made to automatically configure your browser to use the proxy. This new feature tries to automatically configure a number of browsers. Just use the drop down combo box and select your browser. An alternative is to manually configure your browser.

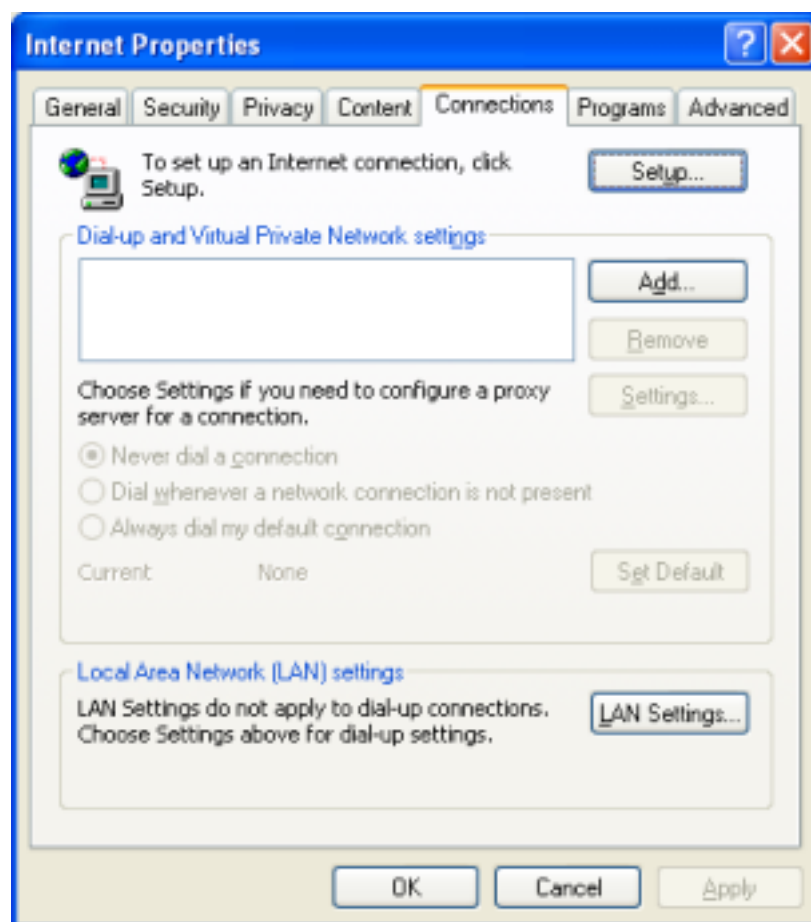
A proxy server listens on one port, the default is usually port 8080 but you may have special requirements and want to use a different port. Just enter the new

port and change the port option in your browser to use the new port. Then click apply.

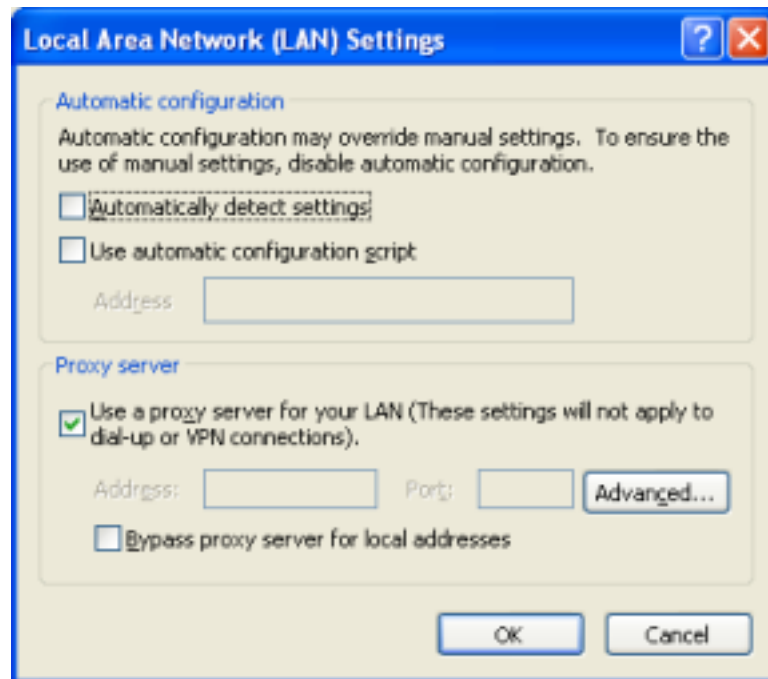
Also specify maximum amount of simultaneous connections allowed at one time.
1000 is OK for small soho's another safe figure is 10000

Configuring the HTTP Proxy [Internet Explorer]

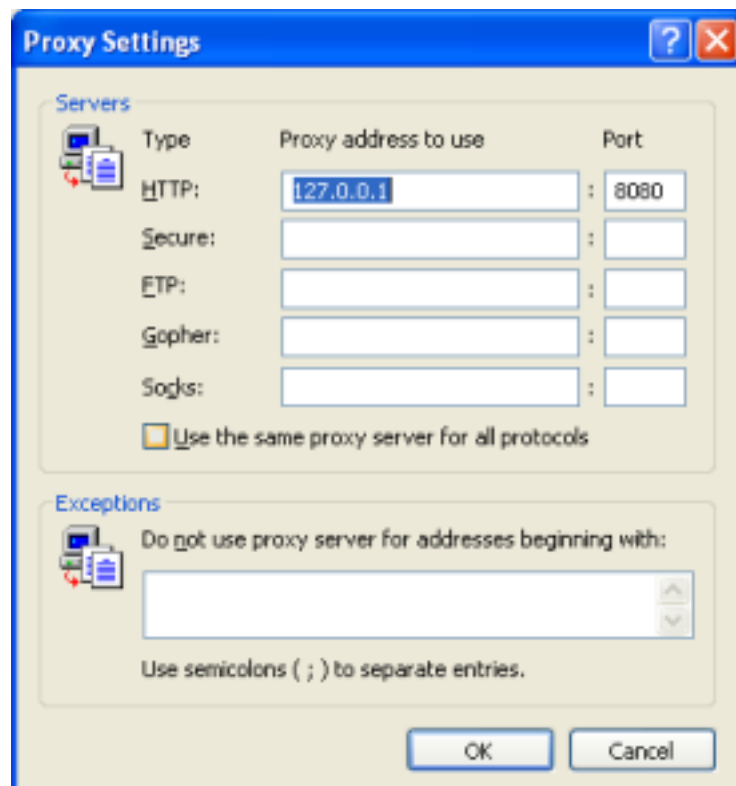
Go to Start - Control Panel - Internet Options or Tool – Internet Options from Internet Explorer.



- 1) Choose the Connections Tab
- 2) Choose the LAN Settings button



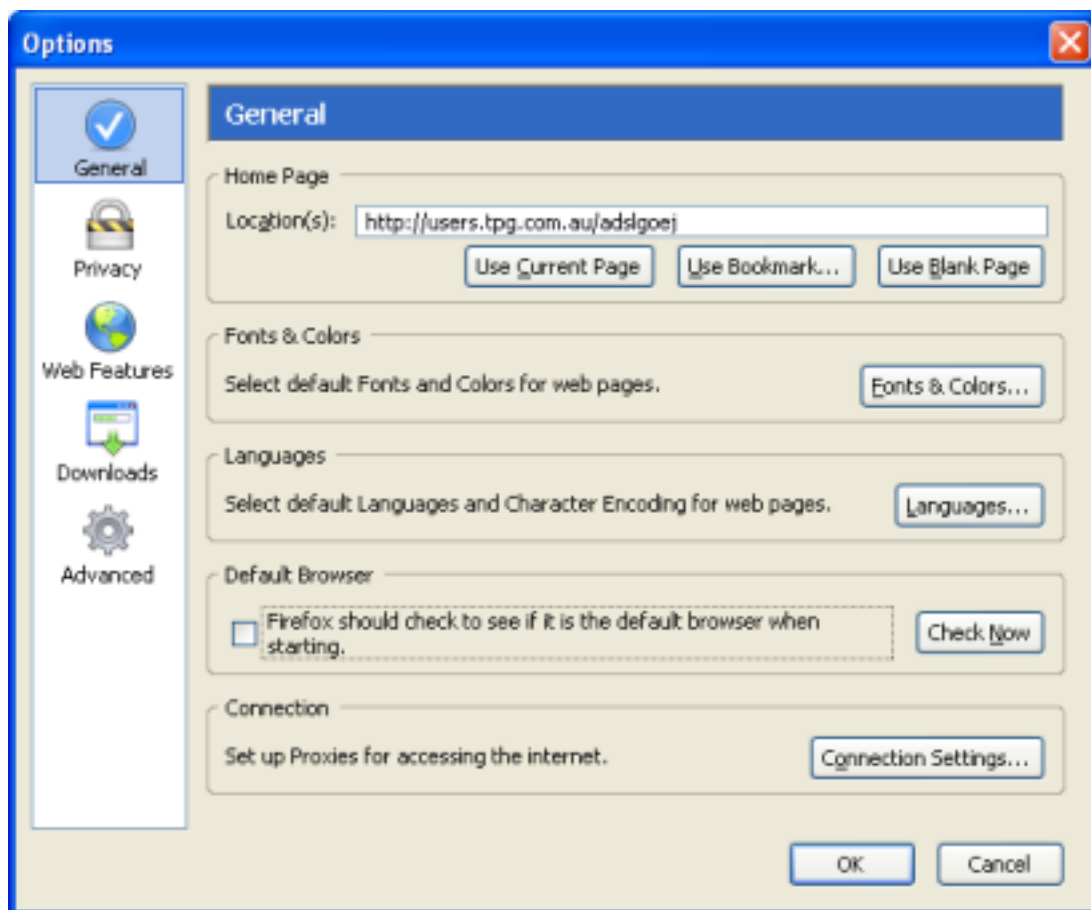
- 3) At the proxy server tick Use a proxy server....
- 4) Select the Advanced button



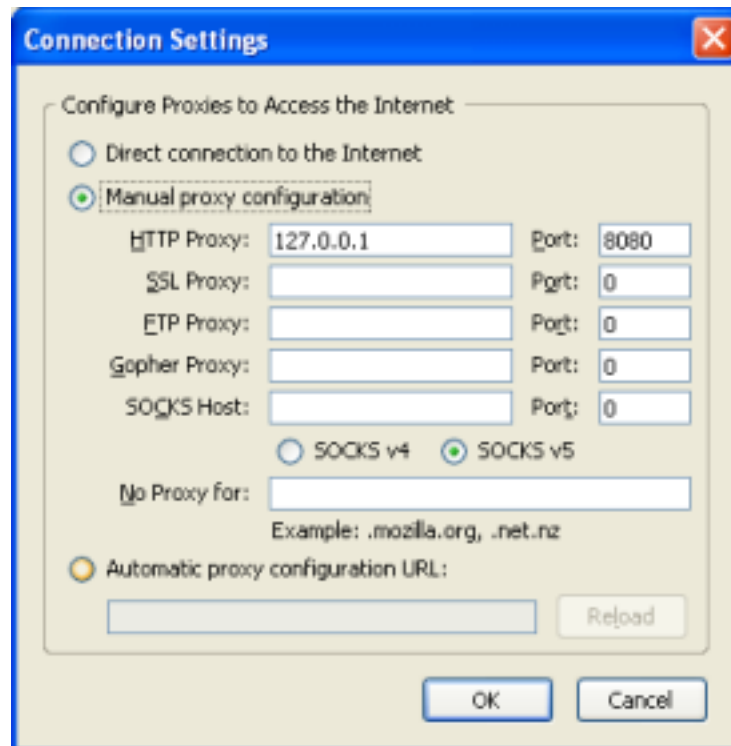
Fill out your IP address and port, the default is 8080 but you can re-configure the port to your own liking. **You could use 127.0.0.1 for proxy address and port 8080 for the port in non-networked environment.**

Then click the enable button in the Parental Filter options and this will turn the proxy on. All requests from clients will then go through the proxy server.

Configuring the HTTP Proxy [Mozilla Firefox]



Select Tool then Options to bring up the above screen.
Select the Connection Settings button



Select Manual proxy configuration
Type your IP address and port number
Click OK to confirm.

When Parental Filters proxy server is active, Mozilla will use the proxy, if Parental Filter proxy server goes down your Internet will not work because you have configured it to look for the proxy be now cannot find it. So come back to this screen and select Direct connection to the Internet and your Internet connection will be restored.

If you do not know your local IP address, Start the proxy and Parental Filter should display it under Local Internet Protocol Address otherwise use 127.0.0.1

Then you can configure the proxy via Internet Options or similar compared to your browser. As the two examples shown above.

Another point to mention is that the Parental Filter proxy server does not cache content.

Bugs: You may find the occasional picture fails to load correctly. We are developing a proxy server in the Java programming language so the whole proxy will be eventually replaced and the bug eliminated that way.

Enable Parental Filter [Direct Method]

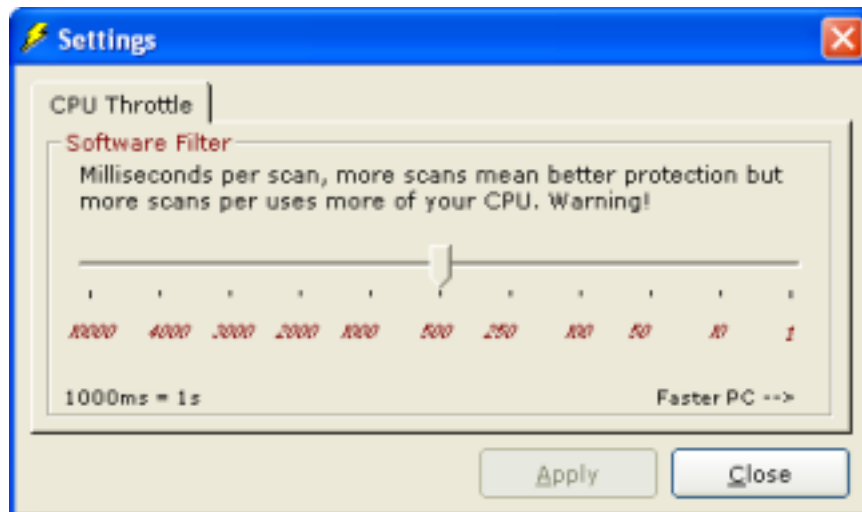
The direct method is a new method of filtering that has made it into Version 0.1.9. It is far superior to the above two methods. It samples the TCP/IP header for banned Internet Protocol addresses, if a banned IP is found the port is closed and communication is halted. This method is non browser specific and should work with all browsers without any need for configuration. For those who know the TCP/IP packet contains much more information and can be sampled to an extensive degree. These types of codes are more in the category of firewalls and protocol analyzers. Problem is we only have 120,000 ips in the database and have to transpose 460,000 more. We could do reverse DNS requests and probably will later.

- There exists one more method which Parental Filter does not utilize. The method uses Windows hosts files. The host file maps hostnames IP's. The "Host Method" is not used because it can be easily defeated. Advertisements blockers use this method by setting an advertisements server to another IP. Such 127.0.0.1

Enable Software Filter

As of Parental Filter 0.1.9 you can block Software. This has been included for programs such as dialers, which cost a hell of lot of money to use. Better filter out these dialers and save the money, then you can send me more donations. Just include the title-bar caption of the software you are trying to ban. The software filter is a little CPU intensive at the moment but will improve in the future.

This software filter is an anomaly in Windows security. No application focuses on this method of security. It can scan and detect Trojan servers and shut them down if configured to do so. More viruses and Trojan scanners identify these servers but the Parental Filter Software blocker can monitor these Trojans and catch and kill them live.



The software filter has protected against hidden Trojan servers running silently in the background. No other security tool exists that provide this kind of protection. If configured the software file can identify Trojan servers and shut them down.

Close Mozilla Instead Of Trying To Redirect

When using Mozilla in tab mode in contrast to opening a new window, this option will shutdown the browser when triggered instead of trying to redirect.

Start Parental Filter When Windows/Parental Filter Loads Up

When you start your computer, you may want Parental Filter to load up automatically as soon as your computer is on, instead of manually starting it by clicking an icon. With this option set, Parental Filter automatically becomes active and starts filtering unwanted content. This option is remembered and stays the same until you change it.

Keep Parental Filter Hidden

This option is in conjunction with Start Parental Filter When Windows Loads Up, with any software application when it loads up it usually shows something, but when you tick this option Parental Filter will remain completely invisible. It will not show anything, but instead remain hidden so no one knows it is there. This is until of course you hit the magic keyboard key which is F10. Then Parental Filter becomes visible again. If you have set a password the password dialog with still show even though this check box is tick. You have set a password and have selected the next option in which case even the password dialog does not appear. To access the configuration options you type your password on your keyboard and Parental Filter magically appears.

Don't Show Password Dialog . Invisible Login

This option is available only if you set a password, Parental Filter will remain totally invisible, just type your password anytime on your keyboard and if the password is correct, Parental Filter will appear and give you access to the configuration options. F9 key will still hide Parental Filter but **pressing F10 will do nothing**.

Use Loop back Redirection Method (Faster)

Checking this check box and using the loop back method means that redirection occurs from your hard-drive; tests have shown that this method is faster because when a site is blocked, Parental Filter will primarily load a page from your hard-disk and then perform the redirection. Note: Pages are not cached on your hard-drive it is just faster to access you C drive first and show a blank page and then perform the redirection later. A Java-Script is used in the blank page to perform the redirection instead of in ParentalFilter.exe. Certain browsers cannot make use of this option such they simply re-direct as normal.

Windows XP Service Pack 2 users should allow this script to run.

Mozilla FireFox users should also permit this script to run.

View the script content, the file is search_script.htm

Periodically Scan Outlook Express [for Banned Content]

The option was requested and is now included. So when a subject or author name is found such as Viagra, or Henry Vu, the email is deleted. That is an automatic wildcard. HerViagra will also get deleted. Use the Master Database Viewer to add or remove subject and senders name. The email gets send to the delete box, so you can see if Parental Filter has correctly managed your email or not.

Note: A periodic scan is possibly about every 60 seconds (only when outlook express is active), if your email is not configured to automatically log in with a username and password you will get a message every 60 seconds saying please configure your email, to stop this uncheck the option or configure your email.

Parental Filter does not query your email provider for new messages it only scans your existing email. Not all email providers are compatible. Test it to see if your one is and email the results. To add a new banned emails access the master database by clicking the master database viewer button. You can add a new entry in the banned emails tab. Either add the name of the sender, the subject phrase or word, and or the email address.

Which ever you can ascertain will be most effective, some or all info. This can become CPU intensive if you have a large amount of emails.

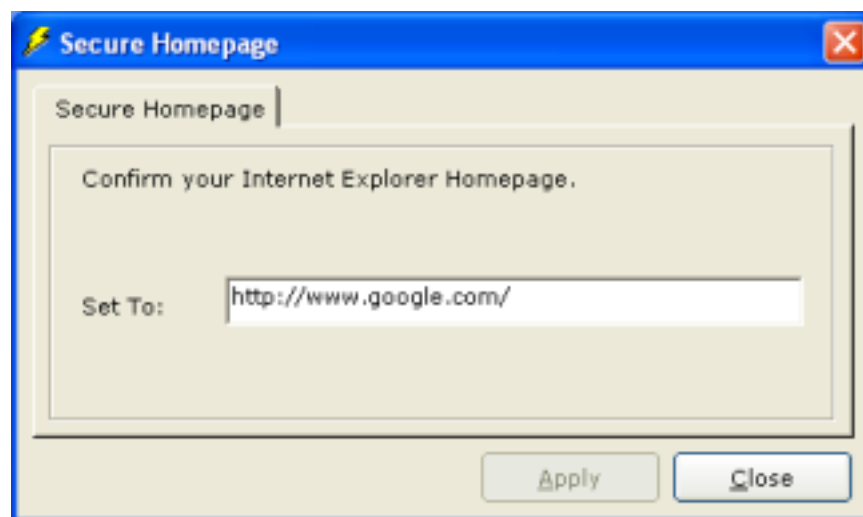
Periodically Scan IE Favorites [for Banned Content]

Sometimes Web Pages contain scripts that will automatically add their websites into your favorites list. Ticking this option does not remove the script that causes this but instead a scan is made every so often to check if any banned words appear in your Internet Explorer favorites list. If they do, such a favorite is deemed objectionable and is **sent to the recycle bin** where you can ascertain the validity of Parental Filters decision.

Periodically Affirmate Your IE Homepage

Sometimes Web Pages contain scripts that will automatically change the Internet Explorer Homepage. Ticking this option does not remove the script that causes this to happen but instead a scan is made every so often to check that your IE homepage stays at the page you want. The default page is google.com. So if you activate this option you must also set your start-page or it may change to google.com.

Clicking the settings button for this option,



Setting the options for securing against scripts hijacking the Internet Explorer homepage are made here. When surfing I find several problems; one such problem is scripts in Web Pages change your Internet explorer start page. A webmaster might put an automatic Java Script or VB Script in a web page so next time you start Internet Explorer you go directly to that webmasters page. This facility below stops that. Just enter the page you want to maintain and click the button named apply. The above example tries to

keep Internet Explorers homepage at . Also make certain the option to enable this feature is checked off in the options list.

Make IE Homepage Random Redirect

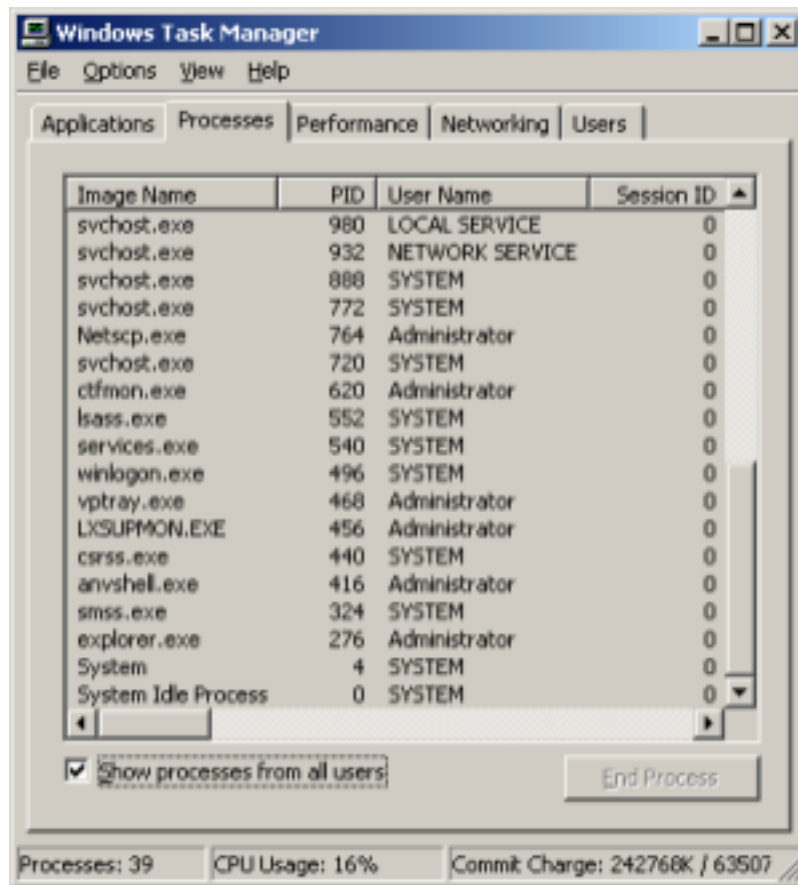
An additional option was to give Internet Explorer the capability of randomly redirecting. In the same fashion that redirection occurs, so does Internet Explorers home page. To try it, select the option and start Internet Explorer. Then click home a few times, you are redirected to a different page depending on the sites in the redirection list box.

Periodically Clear Internet History (Inc cookies)

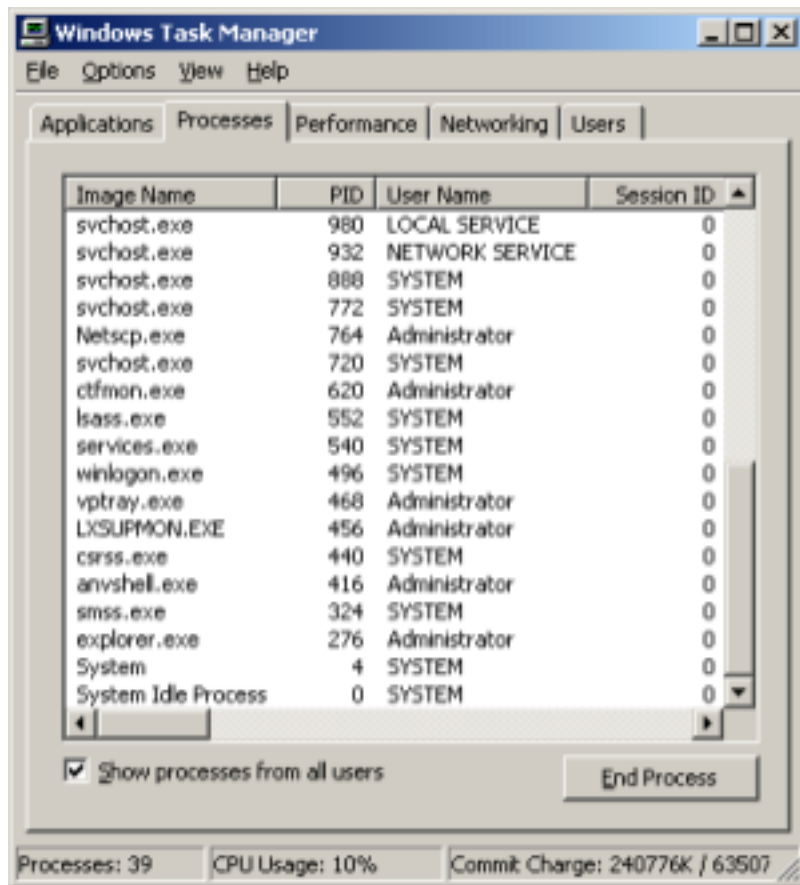
Some persons like to keep their cache and cookie cache clear at all times. Windows retains and records history such as which Web Pages you visit. It also makes use of cookies which are files that hold information about what you do on-line, such as when you type your username and password and click the option to remember the details so next-time you go to that site you don't have to type anything and you are automatically logged in. Many sites use cookies to gain information and spy. You can choose to clear these caches, Parental Filter makes no distinction on whether a cookie is a form filler cookie or a spy cookie as Parental Filter is strictly a porn blocker not a history cleaner, or spy ware remover. This option has been made available due to research that was done to remove objectionable cached material when a site gets blocked.

Disable Process View in Windows XP/2003

You can remove Parental Filter by pressing Ctrl-Alt-Del and looking up the process tab and ending the Parental Filter process, One way not to have Parental Filter show up in the Process list is to make Parental Filter a service, the code to do this is extensive and will take time, in the mean-time you can check this option and have the process tab disabled. Uncheck this value and the process tab will be enabled. Under Windows 98 Parental Filter does not appear in the Task Manager at all.



Disabled



Enabled

Note: this option is language specific, if you use a different language other than English, you must send what your language says is “Windows Task Manager”, “Processes” and “End Process” so I can include them otherwise for other languages setting this option may not work.

Show the Yazoo's icon in System Tray

You can have Parental Filter show an icon in the system tray, therefore allowing you do actions by right clicking on that icon and selecting an action. There is currently only one option and that is to show Parental Filter when it is hidden. The icon is designed by Yazoo. By the way you can click on most icons and be transported to the designer's homepage.

Wait for Enter Key before Redirecting

Like most conventional filters, you must press enter before redirecting. Tick this option to wait until you press enter before redirecting. If you have a slow connection you may get a little of the next page before redirection occurs, if you cannot tolerate this, either uncheck the option or use the proxy or do both.

Remove from Add/Remove Programs List

You can remove Parental Filter from the Control Panels Add/Remove Programs list. Doing this makes it harder to uninstall.

There was plenty of feedback concerning removing Parental Filter. As a security feature you could not remove Parental Filter unless you first shut it down. That security feature has since been removed as there seemed to be much frustration on how to achieve this and the problem was I believe due to a lack of real testing under Windows 98 which caused Parental Filter not to display an interface at all. Before going ahead and setting the option take some time to get comfortable with the interface, if you feel confident with Parental Filter you can use this security option. This option temporarily disables uninstalling Parental Filter by removing the icon from the Add/Remove programs. When you wish to uninstall Parental Filter just uncheck the option and the icon in the Control Panels Add/Remove Programs list should reappear again allowing you to uninstall.

The process URLs using wildcards option has been removed. There was no real use for the option.

Install Parental Filter As A Service

You can install Parental Filter as a Windows or System service. A Windows service is often always on. It remains hidden and start when windows starts. The advantages of running Parental Filter as a service is Parental Filter will run when Windows boots. It will be able to recover when it has a fatal error. It can be harder to shutdown when unauthorized shutdown is attempted.

To run Parental Filter as a service on Windows XP do the following.

- 1) Tick or Check the option Install Parental Filter as a service
- 2) Go to Start – Control Panel – Switch to Classic View – Administrative Tools – Services
- 3) Find Parental Filter and double click it

If you want the service to start at Windows boot time

- 4) Set the startup type to AUTOMATIC
- 5) Under the Logon tab you may choose – Allow service to interact with the desktop.

Aspects of Parental Filter which require desktop interaction include the monitor method. If you choose not to allow desktop interaction. The monitor method will not work. Note: You may not want the monitor method to work. The proxy method and the direct method do NOT require any desktop interaction and have application for networking. Try both to see what you prefer.

- 5).1) Under the recovery tab you can set the
- 5).2) First Recovery to Restart the service
- 5).3) Second Recover to Restart the service
- 5).4) Subsequent Failures to Restart the service

This will help stop unforeseen ways of stopping Parental Filter or you may use the disable Process view option instead.

Synchronize Proxy State With Your Browser

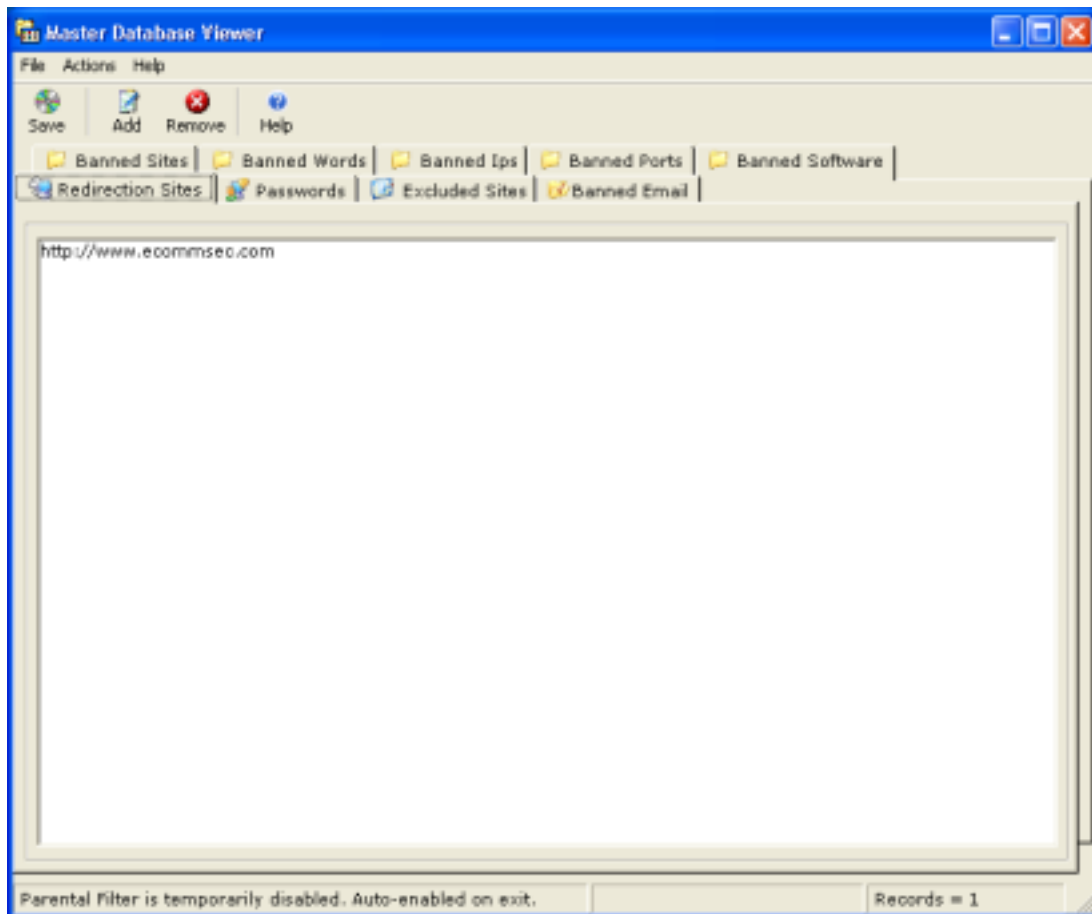
Internet Explorer and many other browsers including MyIE2 can be configured to use and un-use the proxy when you turn the Parental Filter's proxy on or off.

If the data used to fill the options in is corrupted, all options get reset to their default values.

Master Database Viewer



Parental Filter allows you to customize the definitions. You have the ability to define what is allowed or disallowed. This facility is named the Master Database Viewer; click the Master Database Viewer button to access the database.



The Master Database Viewer shows all the definitions in the database such as your redirection sites, passwords, excluded sites and words, your blocked sites, blocked words, banned IP's, ports, only permitted, banned email and your banned software.

It has been designed to make it as easy as possible; you are either adding a new entry or removing an existing one.

Navigating

You click the tab of choice and you will be presented with the database entries of that tab. The above picture shows you all the redirection sites. You can add to that list or remove items from that list.

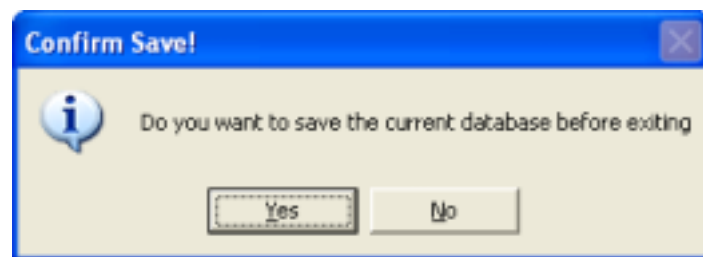
Click each button as an exercise to see what is available.

Saving the Database

As a general rule press the Save button before exiting. If you modify the database and exit you will be prompted by a dialog box. Performing an action does not end with an automatic save, allowing the master database viewer to exit and not save the changes made. You must make the selection to save the database. Warning: There is no undo option.

Exiting the Database

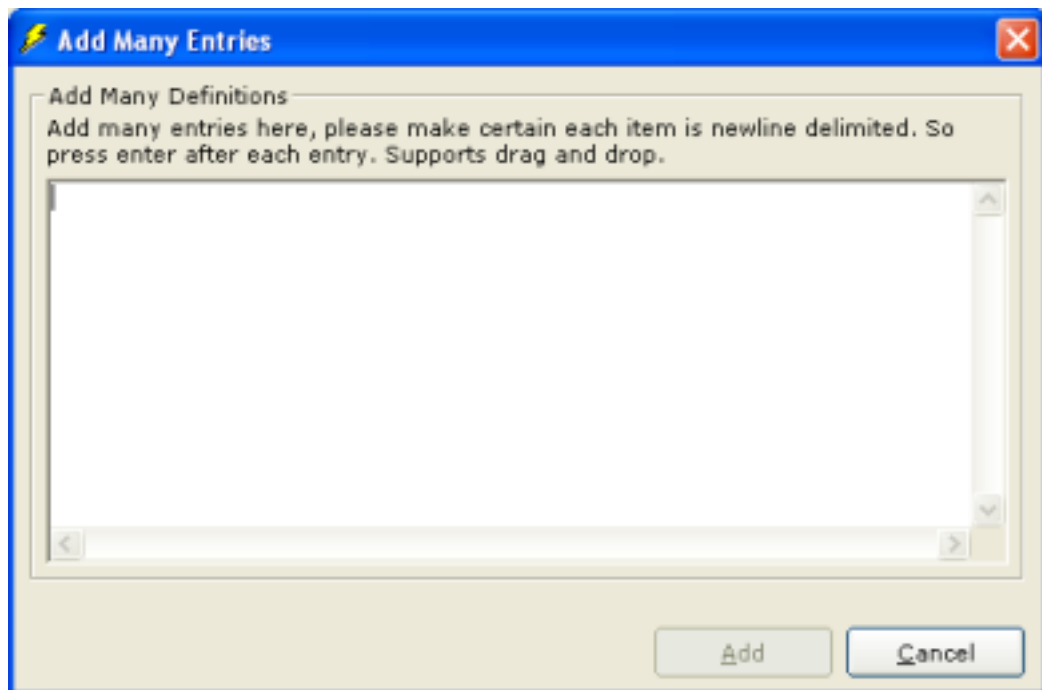
Clicking File - Exit will exit the Master Database Viewer; if you do not press save before exiting you will be prompted by the following message box. Both yes and no exit the database, but selecting yes saves the changes and selecting no does not.



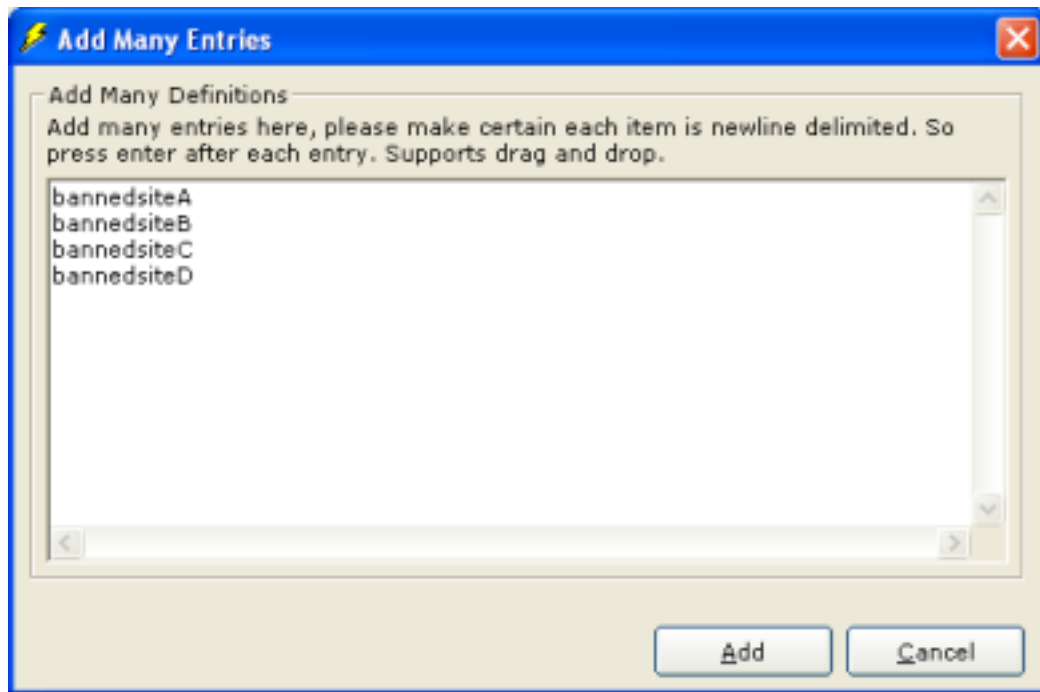
The database will revert to the state it was at prior to any changes if you do not select to save. **There is no auto-save.** Banned Sites and Banned IP's are live connections to the database.

Add - Adding Many Entries

Selecting a tab of to work with and clicking Add will show the following dialog.



Parental Filter prior to version 0.1.7 also used the add or remove convention, although it was rather limiting as the amount of editing one can do was singular. You could only add one definition or remove one definition at a time. The Master Database Viewer allows batch adding and removing and really frees up the amount you can do. It is simple to copy and paste from a text file into the add text box and add many entries.



The above dialog supports drag and drop.

Above is an example of how to add many entries, enter the new definitions in the text box each separate entry is delimited by a new line. One entry per line. Then click the Add button. Otherwise click cancel to abort. The new entries get added to the list and after you press save they become active. If you click cancel half way through or make an error, don't press save just exit and the changes will not be saved.

You can add new sites, words, emails, exclusions and passwords. This gives you the power over what you choose to allow or deny preferable for yourself or for a loved one. **Where the new entries are added depends on what tab is active.** That will be where the new entries will be placed. You can still select a different tab while the add dialog box is visible.

Words

When blocking words Parental Filter only needs the word to be in the sentence for it to activate. For example, there is no point blacklisting the words, porn and pornstars, porn will activate when pornstars is found. In this case watch out for words like butt, as the word button will also be blocked. As a precaution the last word filtered is displayed so while using the Internet if a word is banned that should not be banned you could remove it from the list or add an exclusion and allow the website. **As of version 0.1.9 the banned emails list has been merged with the banned sites and banned**

words list because a similar list was beginning to be formed. So add your Viagra emails to the banned word list.

No wildcards are required, wildcards are automatic. The word "sex" will be found in something as cryptic as "jgfb77SEX9834jnb". It is important to keep all definitions concise as extra scanning is needlessly performed when duplicates are apparent in the definitions. Extra scanning means performance degradation and delays. An example of a duplicate is porn and pornstars.

Sites

The correct format for adding new websites is **NOT** **http://www.bannedsite.com**, Parental Filter only needs banned site, adding the http:// or the www or the .com limits the blocking capabilities of Parental Filter. Once it is added to the list, the site becomes actively blocked. The theory on the format is that when you add, for example **www.awebsite.com**, the site can still be accessed by just typing **http://awebsite.com**, because a comparison of the two websites by Parental Filter will deem that they are different. If you want to ban a site like **match.com** (a singles site), but still want to view **match.net** (a sport site). You should type **match.com**, and in this case **match.net** will not be banned. In short, the more detailed the banned website phrase the more specific the ban. Except when you want to ban **www.match.com**, and the site can still be accessed by typing **http://www.match.com**

Exclusions

I must state a word of caution, porn sites can be accessed through the guise of exclusions, there is a known issue with the word pass. Porn sites can get accessed under its guise. So do not add it. I was experimenting and found a several sites not being processed; the sites were verbally explicit but Parental Filter did nothing. Why? Even though there were plenty of words that should have triggered Parental Filter. The word "pass" was added to the exclusion list and was active. The word pass was also found in the site and those sites were then allowed to be viewed. So that is a paragraph of caution. The exclusion by website is far more conventional because it is more distinct.

Internet Protocols Address IP's

As of version 0.1.9 the direct method allows you to enter IP addresses, when these addresses are found in the header of the TCP/IP packet, they get blocked. There is no limit to the amount of IP's you can add practically millions and with very little overhead.

Banned Ports (Parental Filter has a firewall)

You can also add banned ports remote or local ports, this does have very use the filtering pornography it is more commonly a feature of firewalls and it an offshoot of the technology. A list of commonly used Trojan port has been included. If a service you use fails check the banned ports list and remove the port in question.

Banned Software

As of Parental Filter 0.1.9 you can add title bar captions of software applications, this is mainly a method to disallow dialer type applications to be displayed or used. These applications are designed to make telephone calls at an incredibly high cost.

Redirection Sites

You can add or remove redirection sites with Master Database Viewer; these are the websites Parental Filter redirects to when a site is blocked.

Passwords

You can see the currently active passwords in the password tab. Add or remove new and old passwords.

Permitted Sites

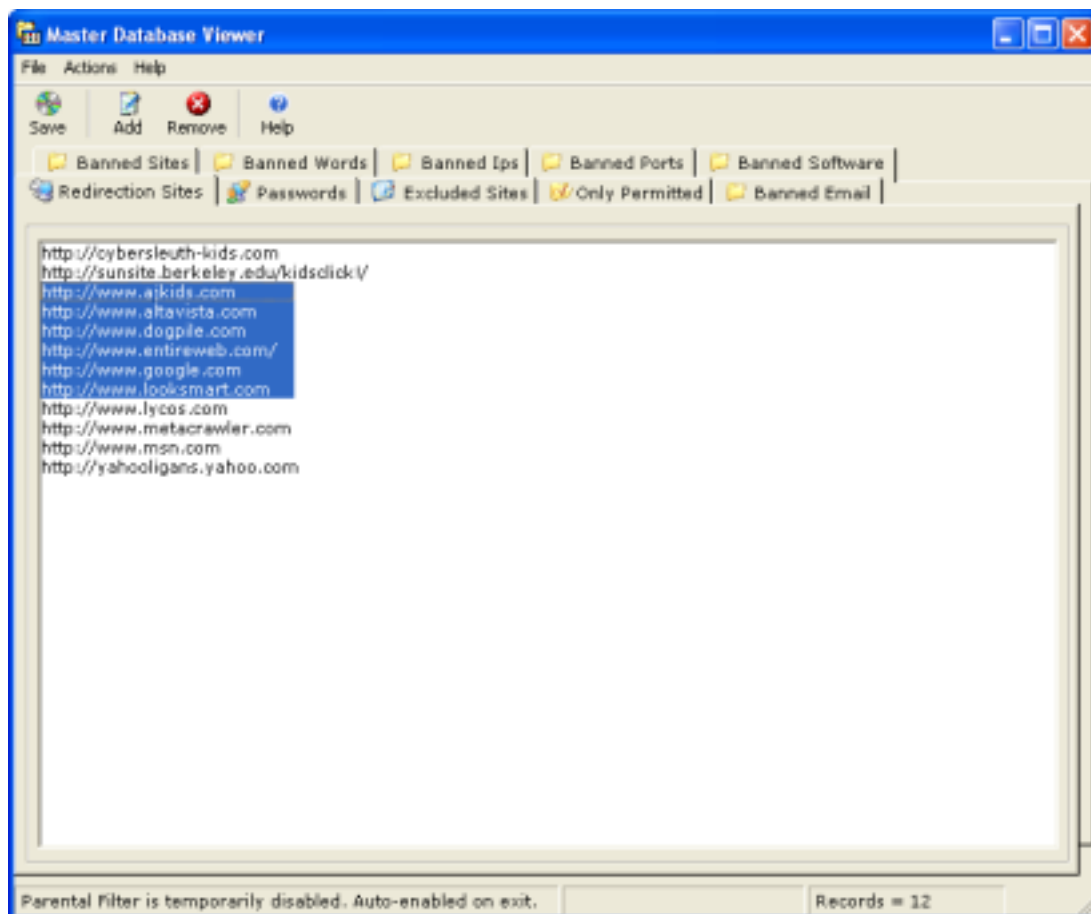
Adding a permitted site in the format permitted.com. This concept is rather new.

Banned Email

Add word/phrase, email sender or email subject

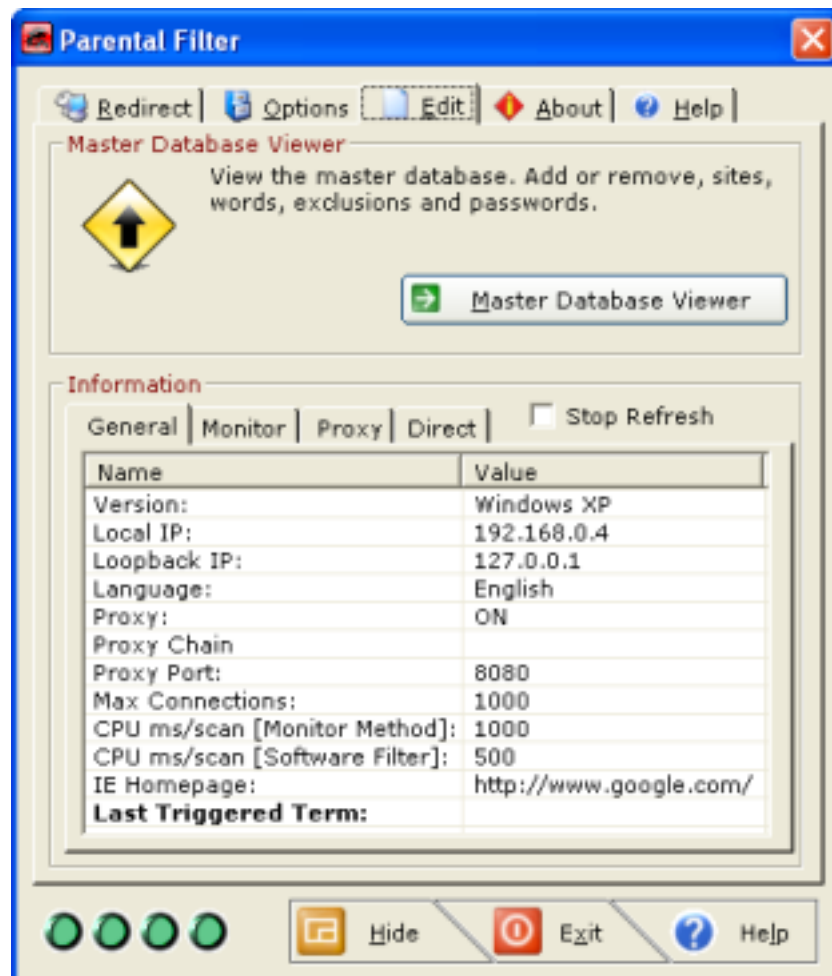
Remove - Removing Many Entries

To remove many entries, click with your mouse, then hold and drag to select multiple items as illustrated in the picture below.



Then click the remove button, you then press save on the toolbar to save the changes.

Information



Logging is another facet of many filters. The accepted method of the moment is communication possibly communication is a little misleading and broad. It is more interaction and involvement with your children with the result of creating maintaining mutual bonds, equality and belonging. So I am little sensitive about Parental Filter being used for spying and will design the logging appropriately.

Logging supplies the following information.

Version: displays the version of Windows you are using either

- UnknownOS
- Windows95

- Windows98
- WindowsME
- WindowsNT
- Windows2K
- WindowsXP

This information is used internally for example the Direct method is not supported by Windows 98 or Windows 95.

Local IP: Your local IP address if configured.

Loopback IP: 127.0.0.1 , the same for everyone

Language: The currently selected language Parental Filter uses...

- English
- German
- Spanish
- Dutch
- Italian
- French

Proxy: Its state, either ON or OFF

Proxy Chain: If you are using a proxy chain, if left blank a proxy chain will not be used, any other value will cause Parental Filter to look for the proxy server stated

Proxy Port: Proxy listens on the following port. Default is 8080.

Max Connections: Proxy server maximum simultaneous connections default is 1000.

CPU ms/scan (Monitor Method): Displays how many checks Parental Filter should make in a second for the monitor method.

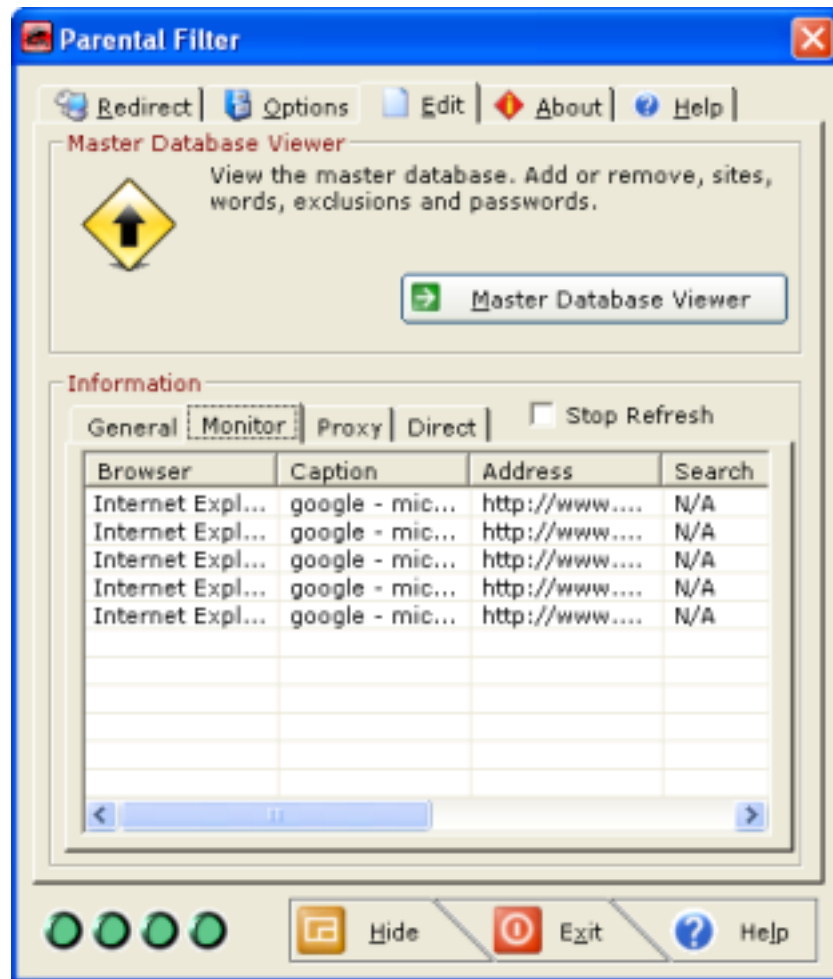
CPU ms/scan (Software Method): Displays how many checks Parental Filter should make in a second for the software method.

Internet Explorer Homepage: Your Internet Explorer start page

Last Term: one of a number of banned words or site e.g. xxx, empty if not triggered.

More on Last Term

When a website is blocked, the phrase or name of the website that is blocked will appear in the above space provided. This will allow you to manage websites that falsely trigger Parental Filter by either removing those terms from the database, making those terms more descriptive or as of Version 0.1.7 adding an those terms to an exclusion list.

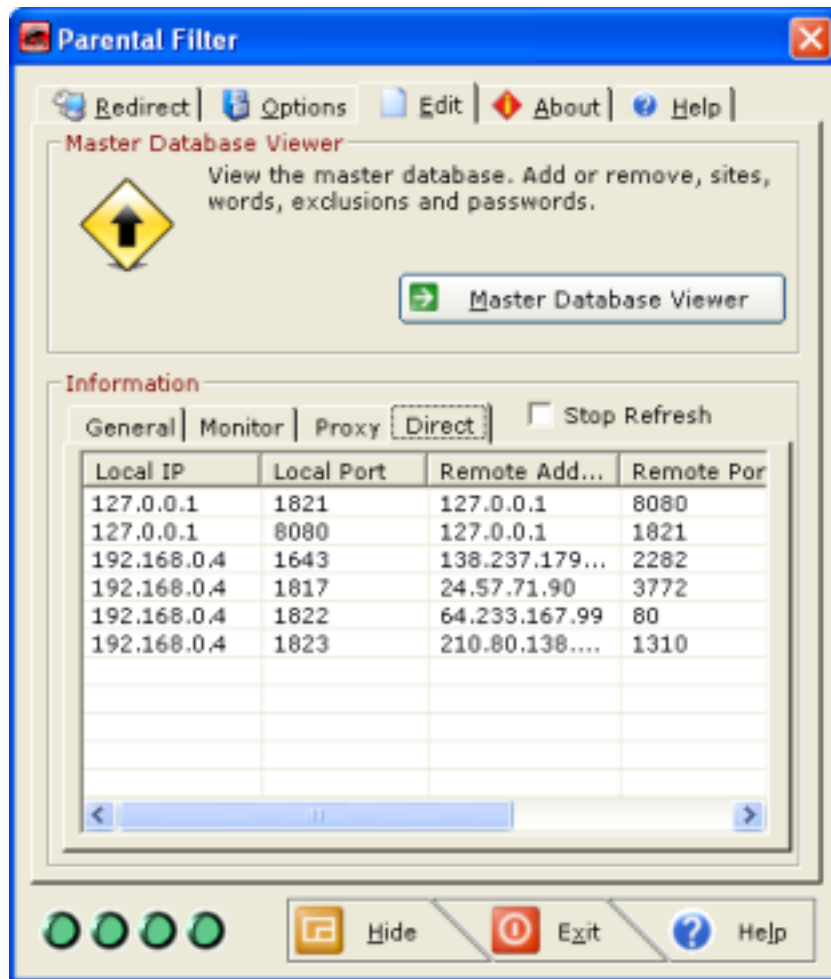


The information displayed by the monitor tab is information used by the monitor method to identify what page is being displayed

The stop refresh option allows you to stop refreshing the list so it can be studied further.

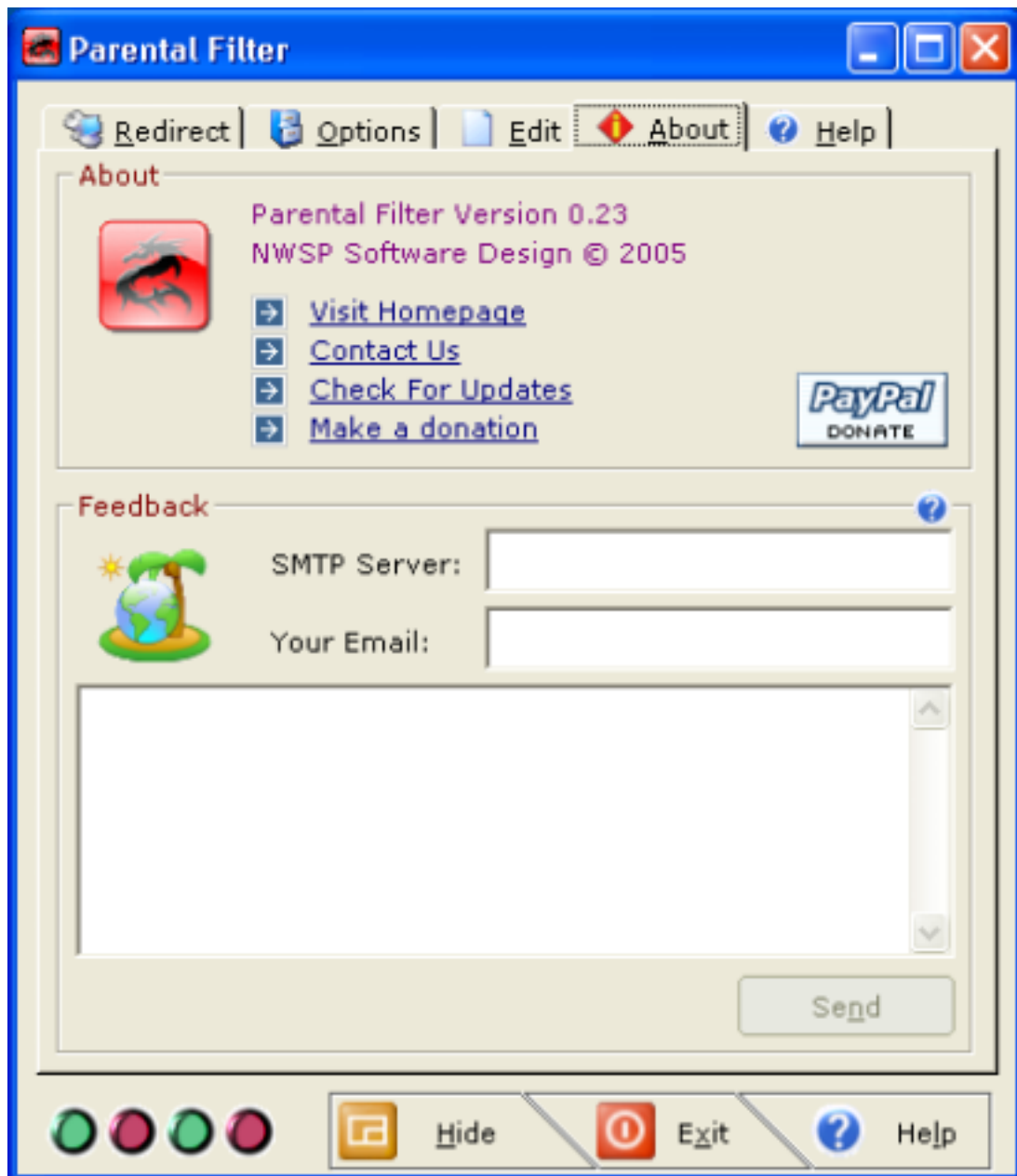


The information displayed on the proxy tab is the HTTP transaction, view it at your leisure. The proxy logging is not functioning at the moment, will fix later.



The information displayed by the direct tab displays the information about the current connections to your computer and others and the state of communication. You may find anomalies with some connections. Study them further and you may suspicious connections occurring. You can block those ports and IP addresses.

About



The blue buttons above resemble web page links and when your mouse goes over them they change color, they turn red. When you click on them they perform an action. Below is a brief description of each item.

Visit Parental Filter Homepage

Click on this link to visit the Parental Filter homepage. The current homepage is [HTTP://www.ecommsec.com](http://www.ecommsec.com) , you can always get the latest information about Parental Filter from the web address above.

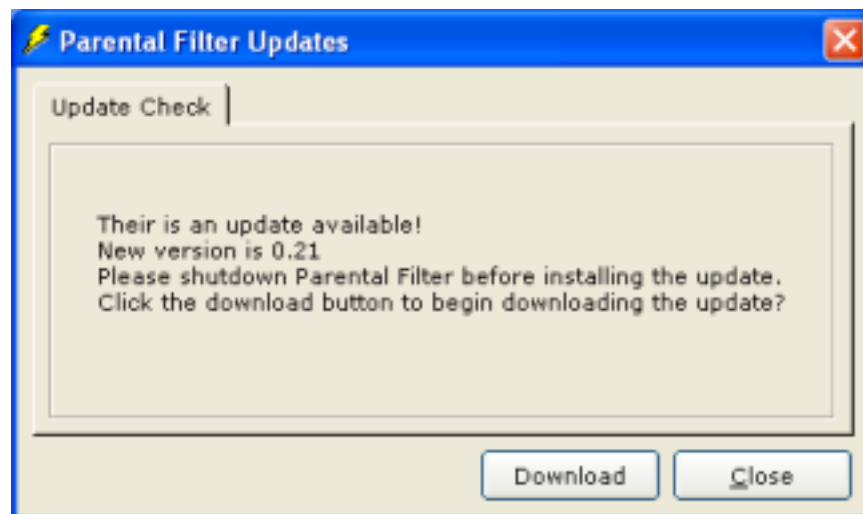
Email Parental Filter People

Click on this link to open your default email client and send NWSP some feedback. The current email for all communication is agpublic@ecommsec.com

Check for Parental Filter Updates

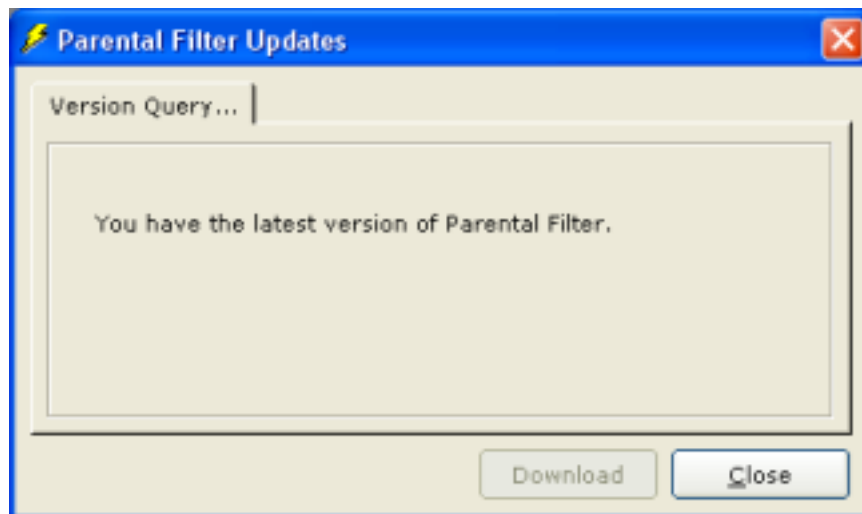
Click on this link to check if a new version of Parental Filter is available. This initiates communication with NWSP and checks if an update exists.

If an update is available...



If there is an update, you can choose to either download it or otherwise.

If you have the latest version



Remember to uninstall the old versions before installing the new version

The facts are you do not need to uninstall the old version before installing the new version; you can simply overwrite the old version by installing the new version. But show some care for some trouble free computing and uninstall the old version before installing the new version, also see if a folder resides in program file named Parental Filter and delete it before installing the new version.

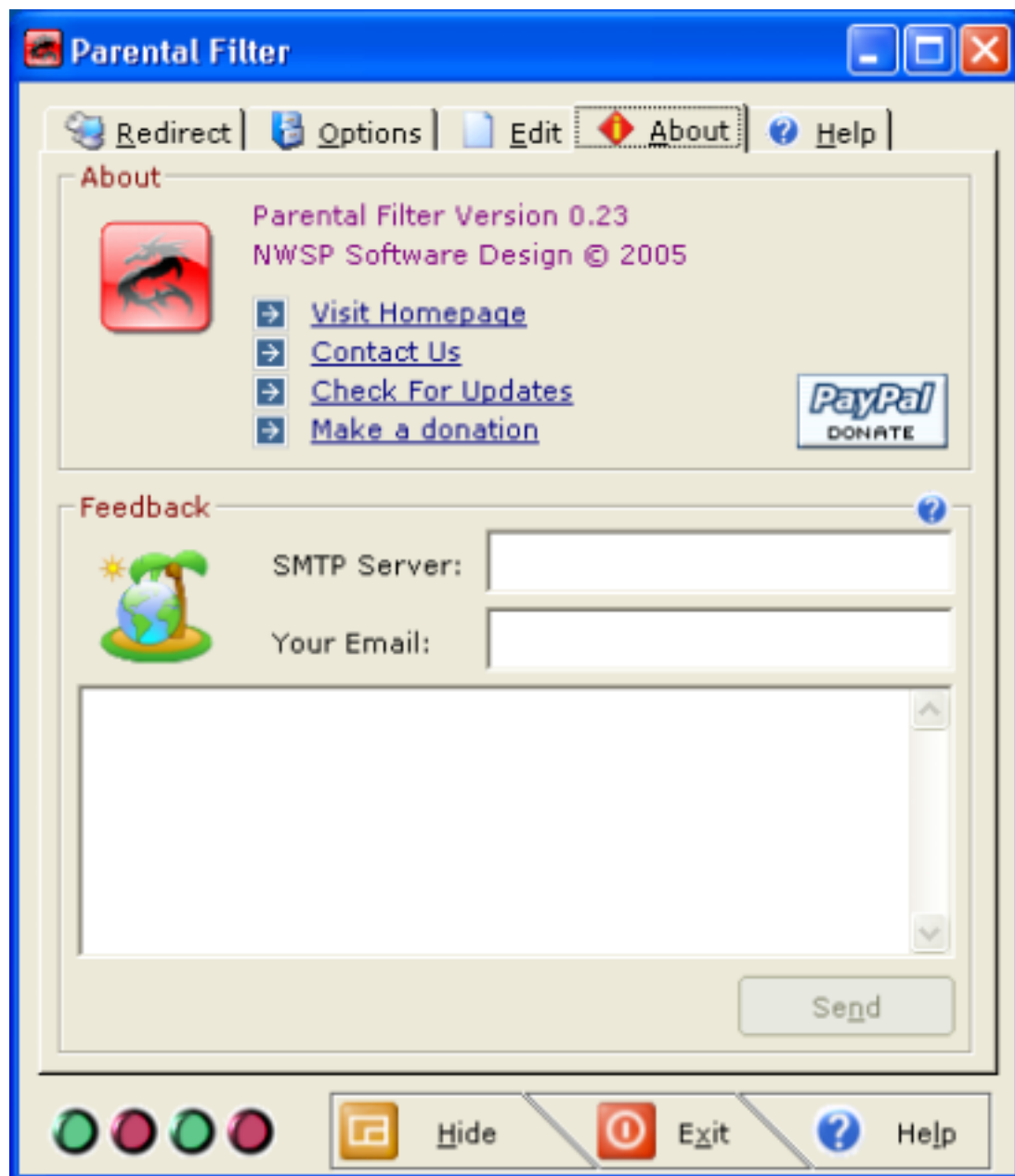
Backup the master database if you have made changes before you uninstall.

If you have made changes to the database back it up. A way to merge two databases will be formulated.

Make a donation

Click on this link go to Parental Filter and make a donation.

About - Email



An email facility has been provided in the application. Simply type your email address in the text box provided. For the SMTP sever, if you do not know this, it is usually in this format. **SMTP.** , and then type what comes after @ in your email. For

example, SMTP.myemailprovider.com, considering my email address is myname@myemailprovider.com. Then click the send button. If you are unsure about this please click on the email link instead. An effort has been made to auto-fill the SMTP Server and your email address. If the auto fill is successful, just type your message in the text box and click send.

Parental Filter gets updated by feedback. You must announce the issue to get that issue resolved.

Ensure success resolution of an issue, tell us:

- Windows Version e.g. XP or 98
- Windows Language e.g. English French
- Browser & Version e.g. IE 6.0.3790.0
- Other Info e.g. using toolbar etc)

Feedback gets very vague without the above and communication breaks down causing frustration for all involved. So the information you can provide the better.
Consider sending a screenshot.

Hide, Exit & Help Buttons



Hide

Clicking on the Hide button simply makes Parental Filter invisible, you can also press **F9** to do this and then press **F10** to make Parental Filter reappear again.

Exit

Pressing this button does not shutdown windows, it will instead turn off Parental Filter and filtering will be disabled.

Help

Clicking the help button brings up this help.

The Four Green Squares

The four green squares are indicators,

The left most square - when green means that Parental Filter's monitor method is on, red means it is turned off.

The next square – when green means that Parental Filter's proxy method is on, red means it is turned off.

The next square – when green means that Parental Filter's direct method is on, red means it is turned off.

The right most square - when green means that Parental Filter's software filter is on, red means it is turned off.

When a method is turned off notified by red indicator Parental Filter system tray icon will not change unless they are all turned off because it may not be wrong to use one or more methods.



The End