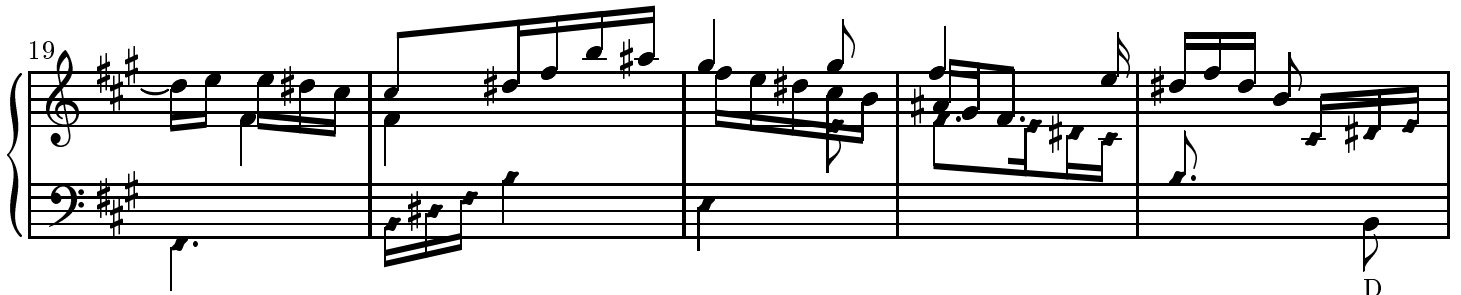
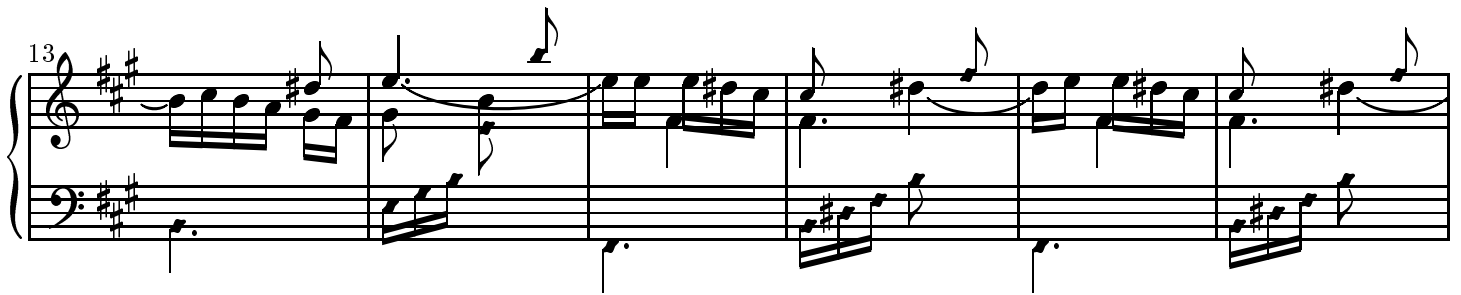
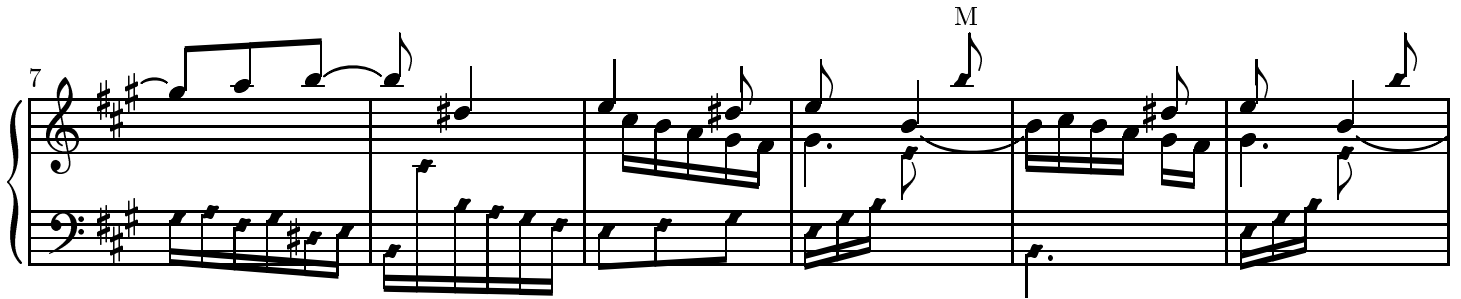
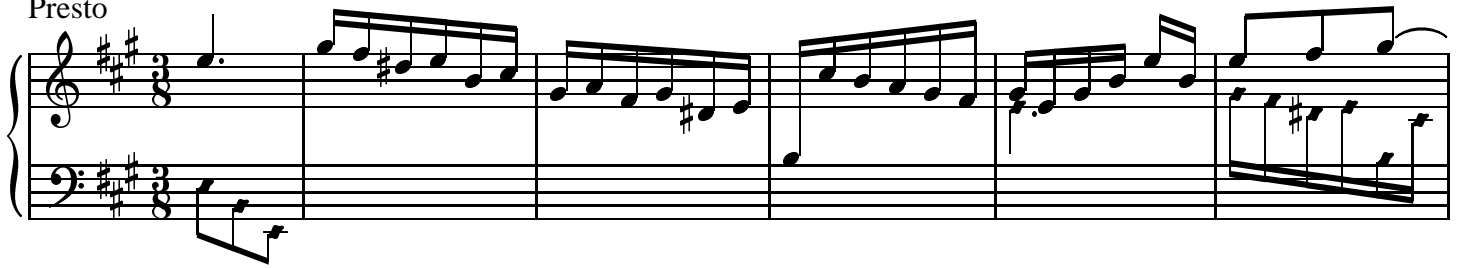


Sonata

DOMENICO SCARLATTI
K.28 L.373

Presto



29

Measures 29-33. Treble staff: eighth-note runs. Bass staff: descending line.

34

Measures 34-38. Treble staff: eighth-note runs. Bass staff: descending line.

39

Measures 39-43. Treble staff: eighth-note runs. Bass staff: descending line.

44

Measures 44-48. Treble staff: eighth-note runs. Bass staff: descending line.

49

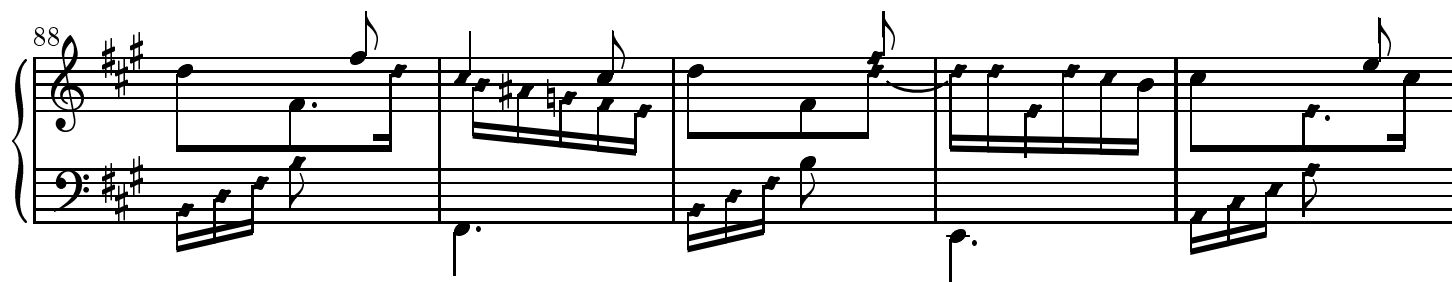
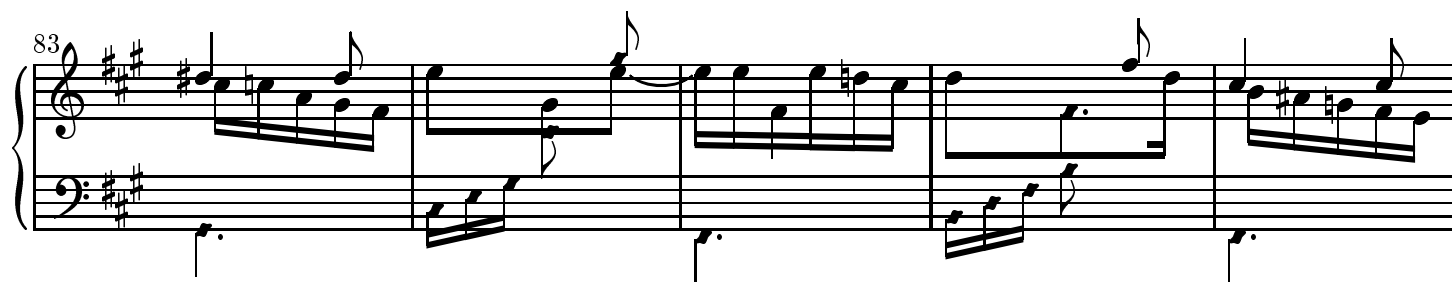
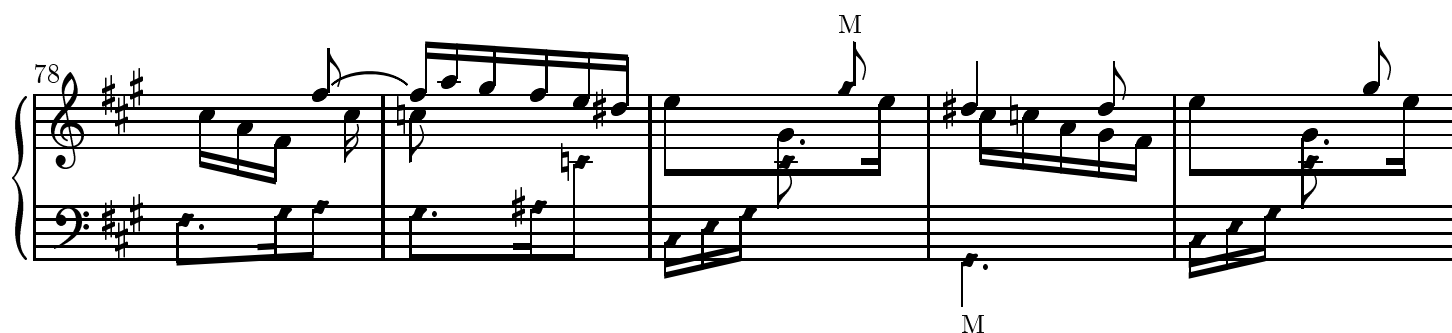
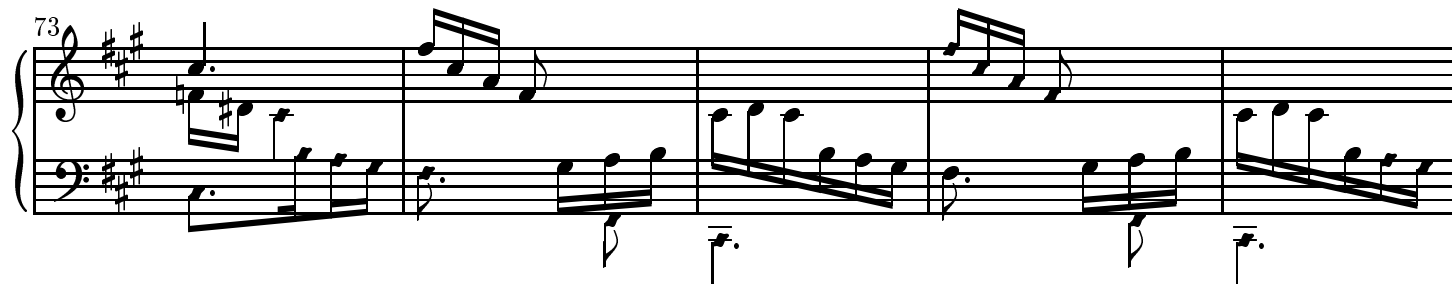
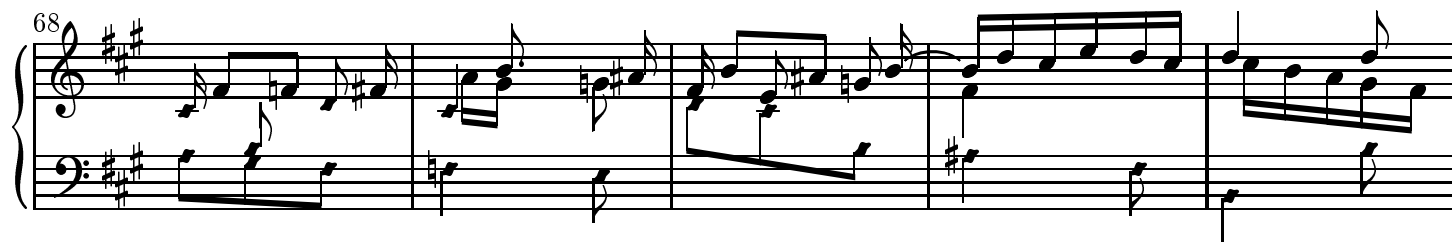
Measures 49-52. Treble staff: eighth-note runs. Bass staff: descending line.

53

Measures 53-57. Treble staff: eighth-note runs. Bass staff: descending line.

58

Measures 58-62. Treble staff: eighth-note runs. Bass staff: descending line.



93

98

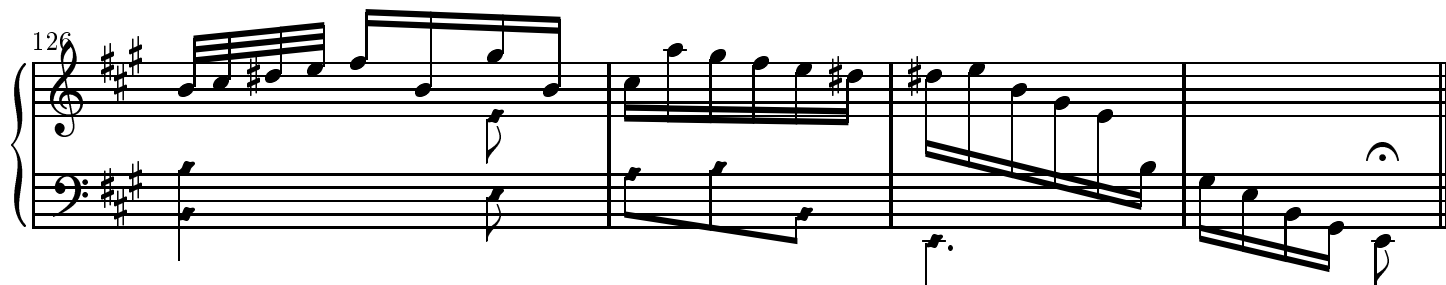
103

108

113

118

123



The positioning of the dotted 8th notes in bars 67 and 69 is inconsistent with their value. They may have been intended to be played as shown here. But, if the following 16th notes were added later, they would best be played a 16th later in time with 8th note duration.

Copyright ©John Sankey 1999. Typeset by GNU LilyPond 1.2.16. Released under the GNU General Public License. You are free to copy and distribute this document as much as you wish, in any format, as long as this notice appears on each copy.