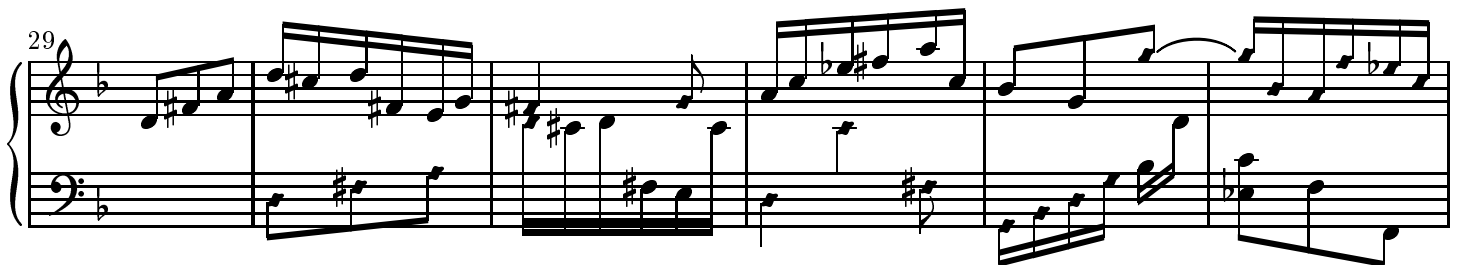
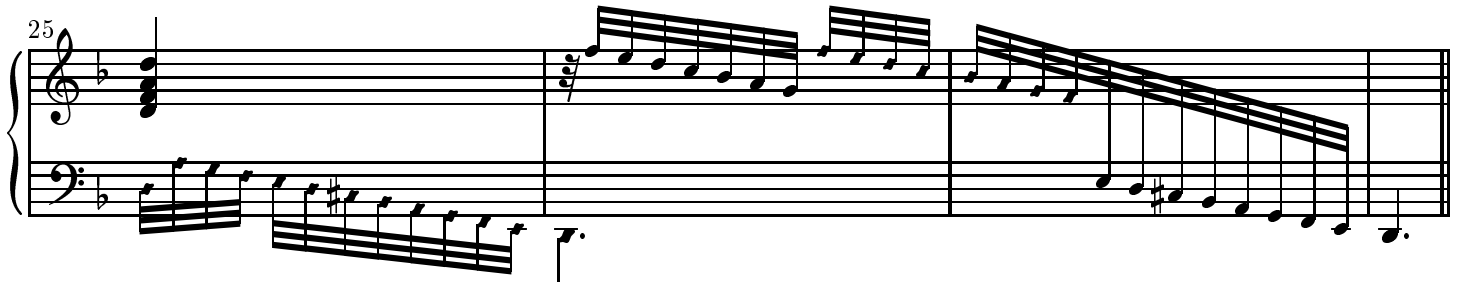
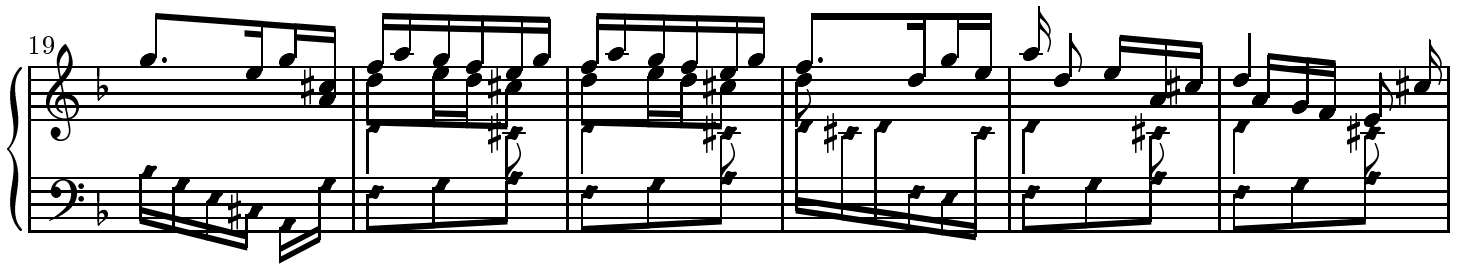
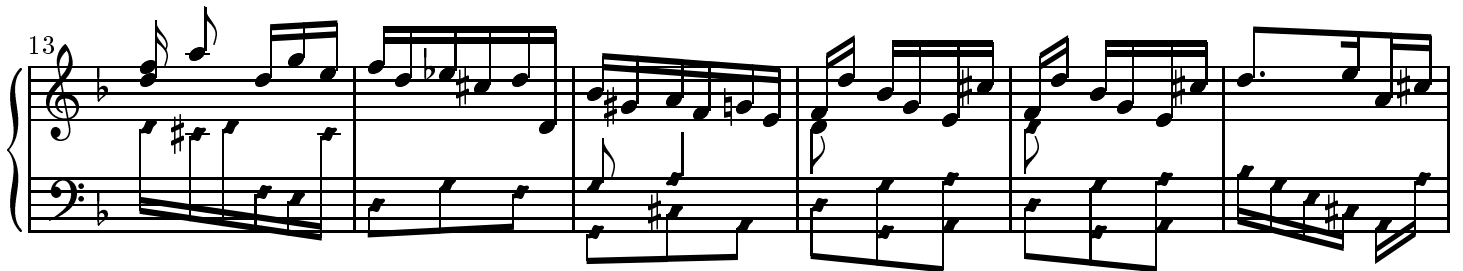
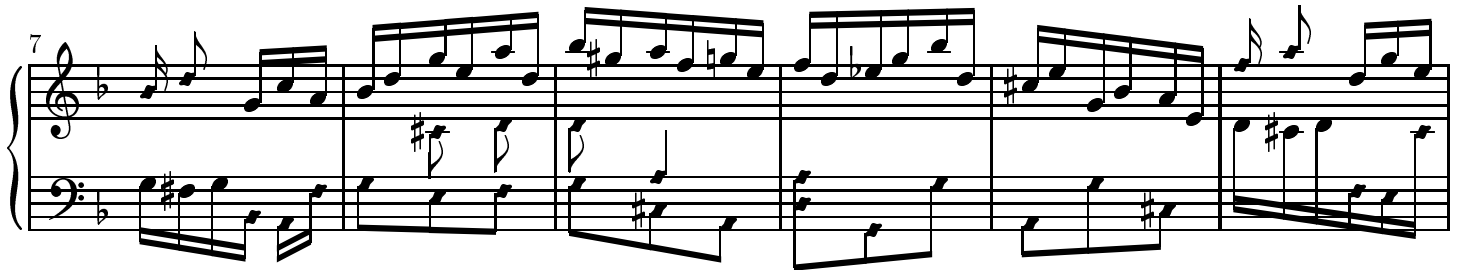
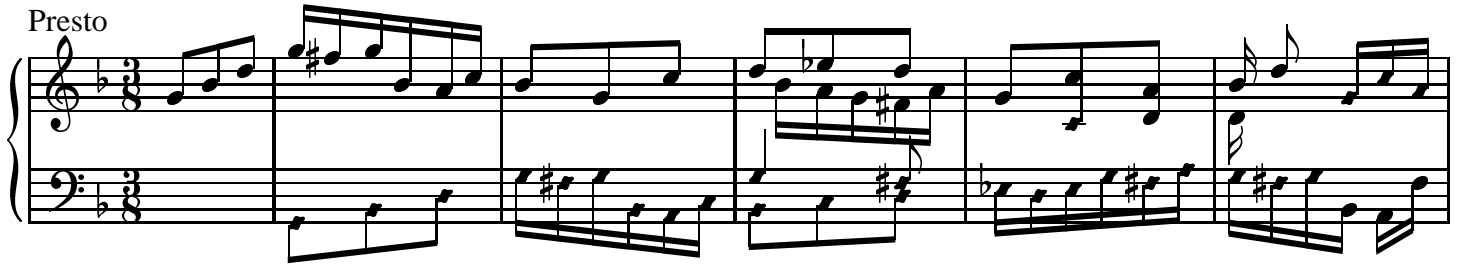


Sonata

DOMENICO SCARLATTI

K.76 L.185

Presto



35

Measures 35-40: Treble staff contains eighth and sixteenth notes, some beamed together. Bass staff contains eighth and sixteenth notes, some beamed together. Key signature has one flat.

41

Measures 41-45: Treble staff contains eighth and sixteenth notes, some beamed together. Bass staff contains eighth and sixteenth notes, some beamed together. Key signature has one flat.

46

Measures 46-50: Treble staff contains eighth and sixteenth notes, some beamed together. Bass staff contains eighth and sixteenth notes, some beamed together. Key signature has one flat.

51

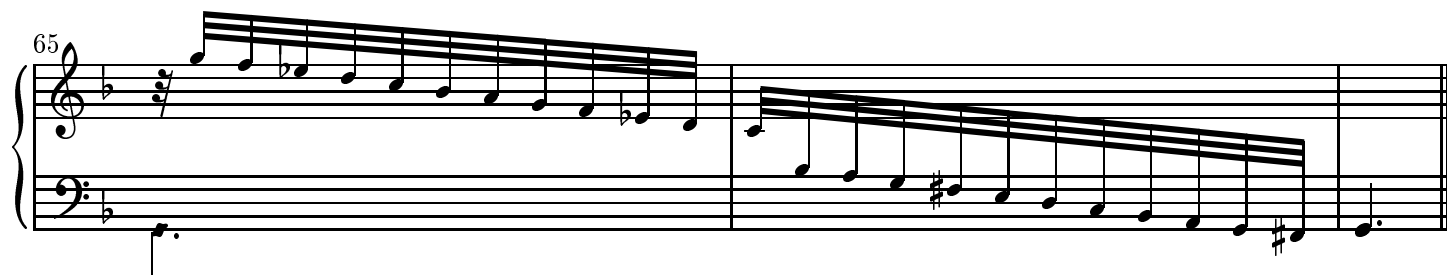
Measures 51-55: Treble staff contains eighth and sixteenth notes, some beamed together. Bass staff contains eighth and sixteenth notes, some beamed together. Key signature has one flat.

56

Measures 56-60: Treble staff contains eighth and sixteenth notes, some beamed together. Bass staff contains eighth and sixteenth notes, some beamed together. Key signature has one flat.

61

Measures 61-65: Treble staff contains eighth and sixteenth notes, some beamed together. Bass staff contains eighth and sixteenth notes, some beamed together. Key signature has one flat.



Copyright ©John Sankey 1999. Typeset by GNU LilyPond 1.2.16. Released under the GNU General Public License.
You are free to copy and distribute this document as much as you wish, in any format, as long as this notice appears on each copy.