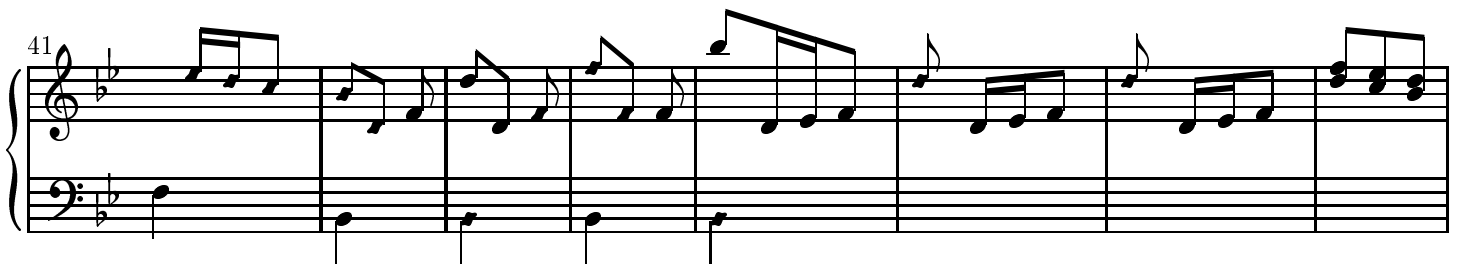
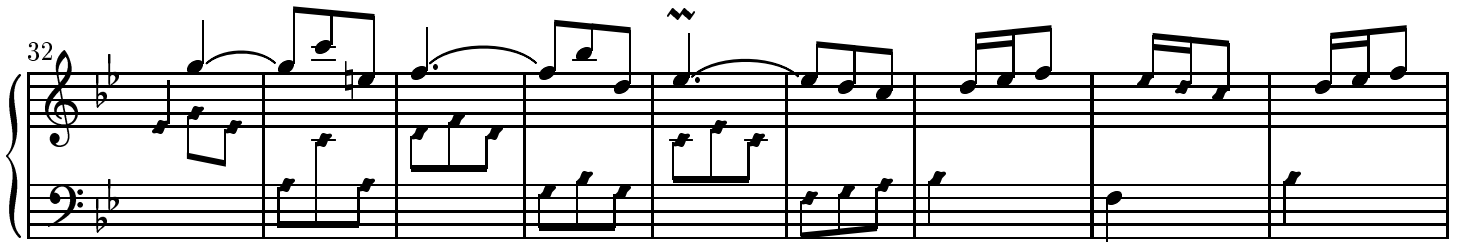
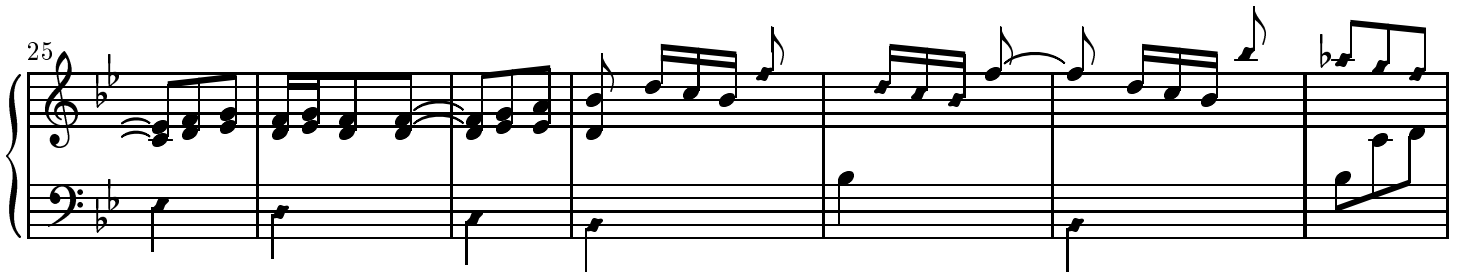
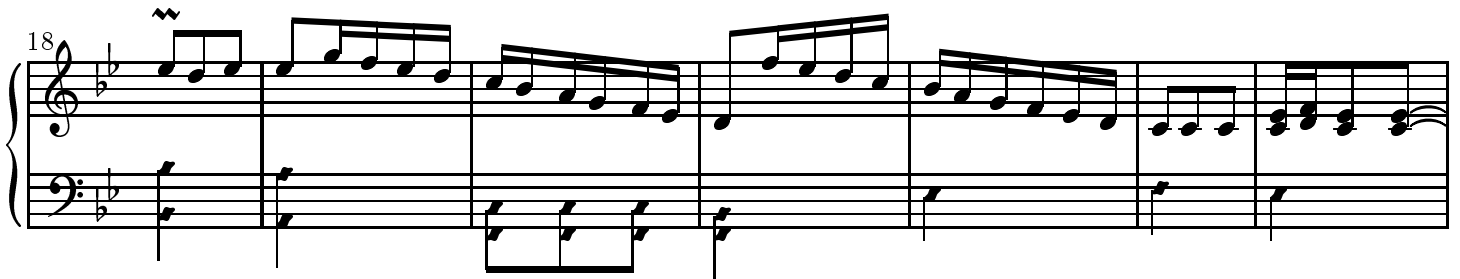
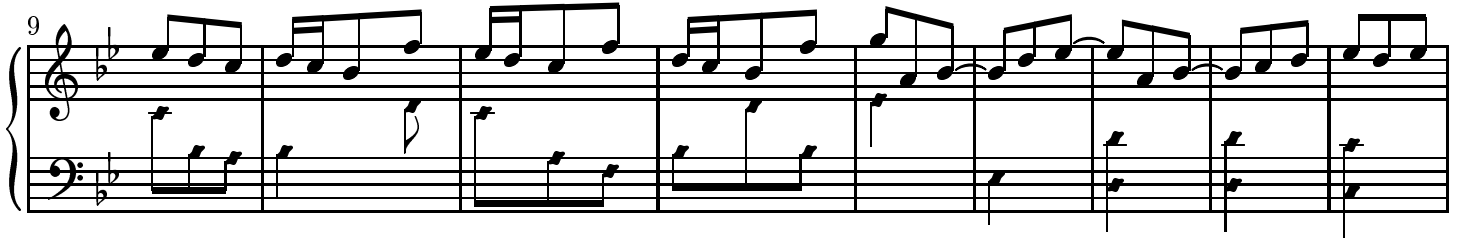
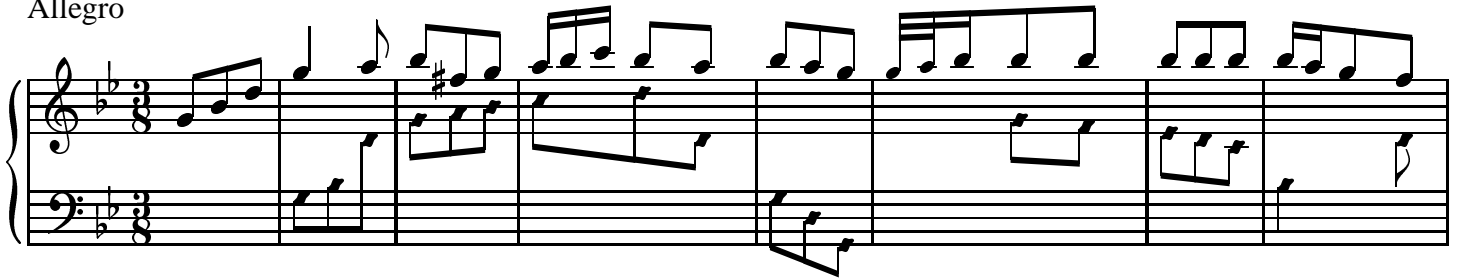


# Sonata

DOMENICO SCARLATTI

K.97

Allegro



49

57

66

75

86

93

100

System 100-107: Treble and bass staves. Treble staff contains eighth and sixteenth notes, some beamed. Bass staff contains eighth notes and rests.

108

System 108-114: Treble staff contains eighth and sixteenth notes, some beamed. Bass staff contains eighth notes and rests.

115

System 115-123: Treble staff contains eighth and sixteenth notes, some beamed. Bass staff contains eighth notes and rests.

124

System 124-130: Treble staff contains eighth and sixteenth notes, some beamed. Bass staff contains eighth notes and rests.

131

System 131-137: Treble staff contains eighth and sixteenth notes, some beamed. Bass staff contains eighth notes and rests.

138

System 138-144: Treble staff contains eighth and sixteenth notes, some beamed. Bass staff contains eighth notes and rests.

146

System 146-155: Treble and bass staves. Treble staff contains eighth and sixteenth notes with various accidentals. Bass staff contains mostly whole and half notes.

156

System 156-164: Treble and bass staves. Treble staff features more complex rhythmic patterns including sixteenth notes. Bass staff continues with simple harmonic support.

165

System 165-170: Treble and bass staves. Treble staff has a melodic line with many accidentals. Bass staff has a few notes, including a triplet in the final measure.

171

System 171-182: Treble and bass staves. Treble staff has a melodic line with many accidentals. Bass staff has a few notes, including a triplet in the final measure.

183

System 183-188: Treble and bass staves. Treble staff has a melodic line with many accidentals. Bass staff has a few notes, including a triplet in the final measure.

190

System 190-195: Treble and bass staves. Treble staff has a melodic line with many accidentals. Bass staff has a few notes, including a triplet in the final measure.

198

206

216

224

235

243

This sonata is known only from a secondary source.

Copyright ©John Sankey 1999. Typeset by GNU LilyPond 1.2.16. Released under the GNU General Public License.

You are free to copy and distribute this document as much as you wish, in any format, as long as this notice appears on each copy.