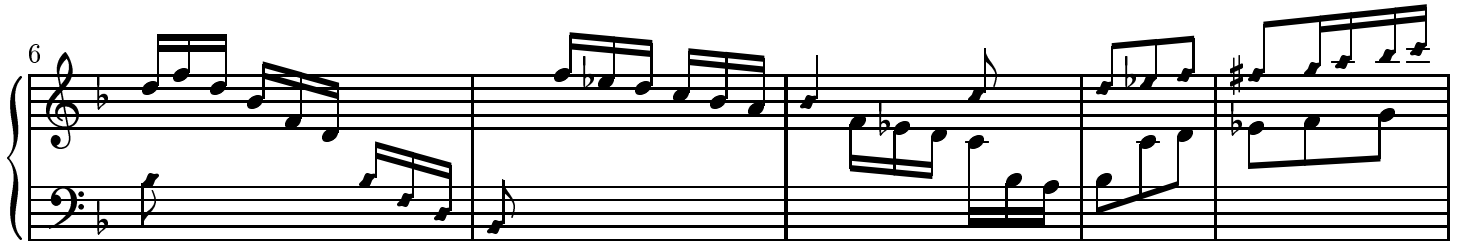
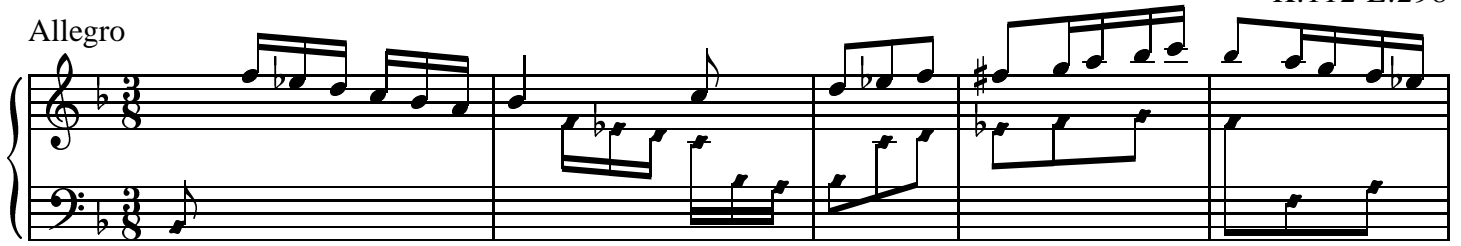


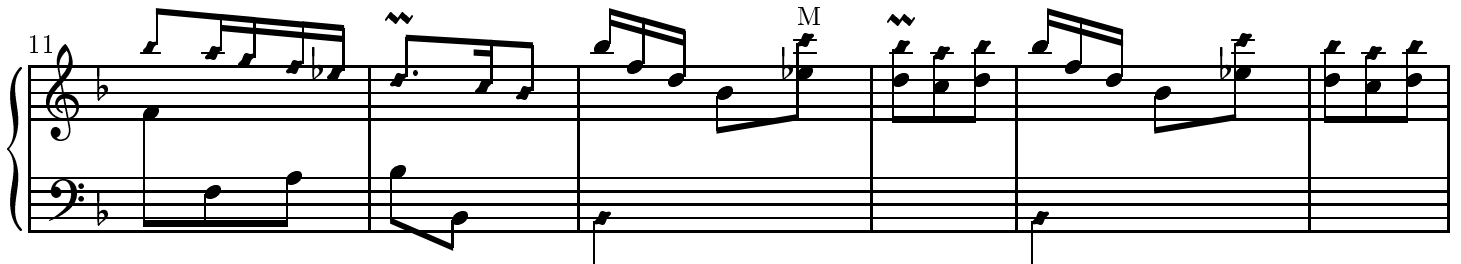
Sonata

DOMENICO SCARLATTI
K.112 L.298

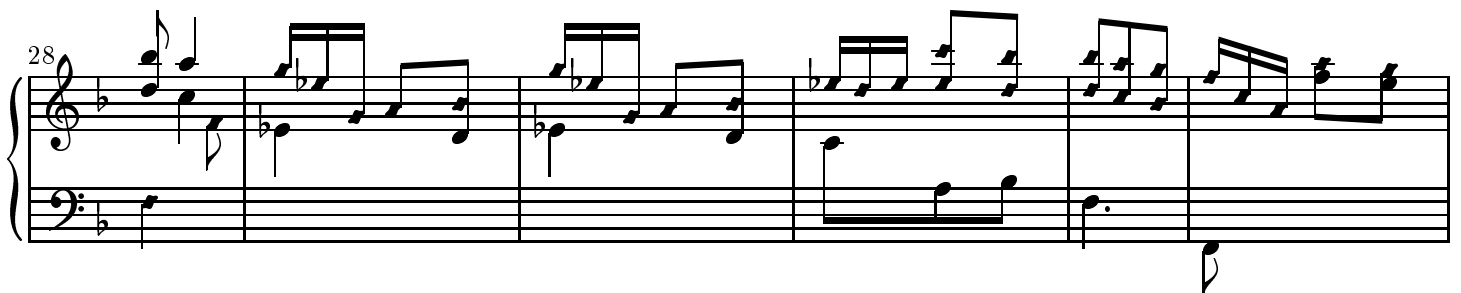
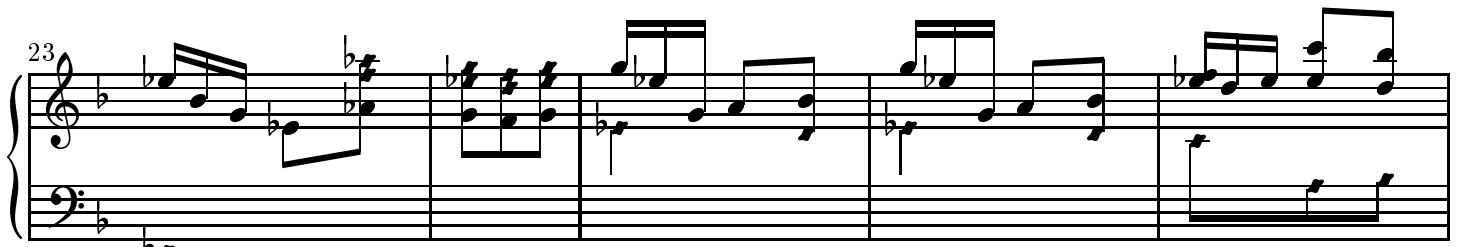
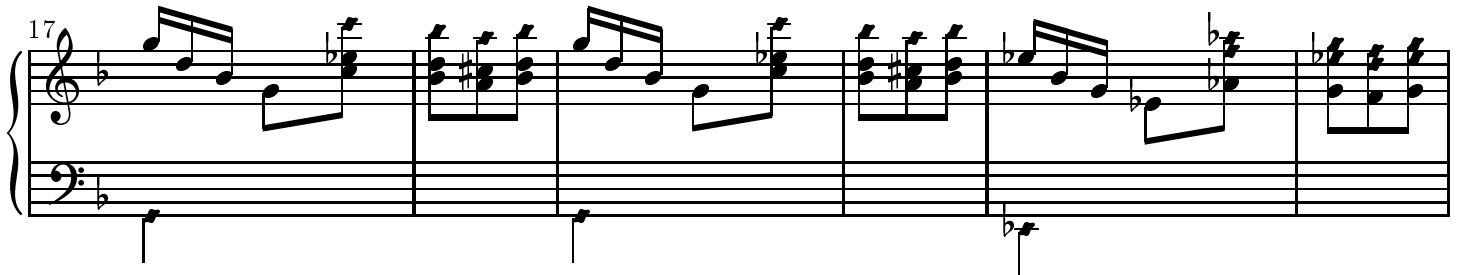
Allegro



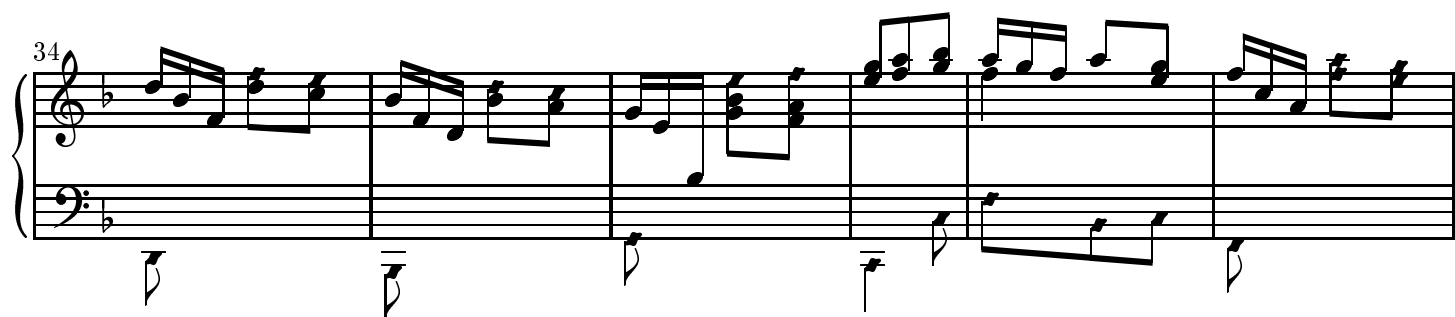
M



M

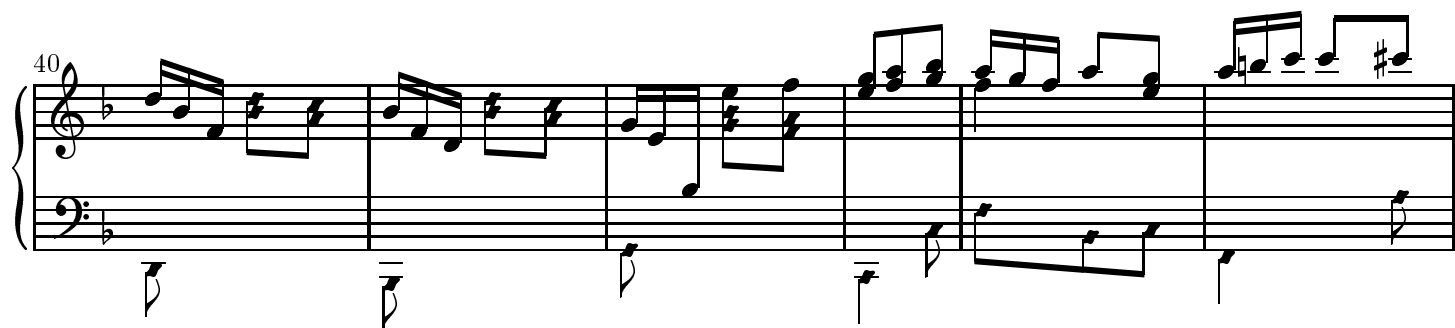


34



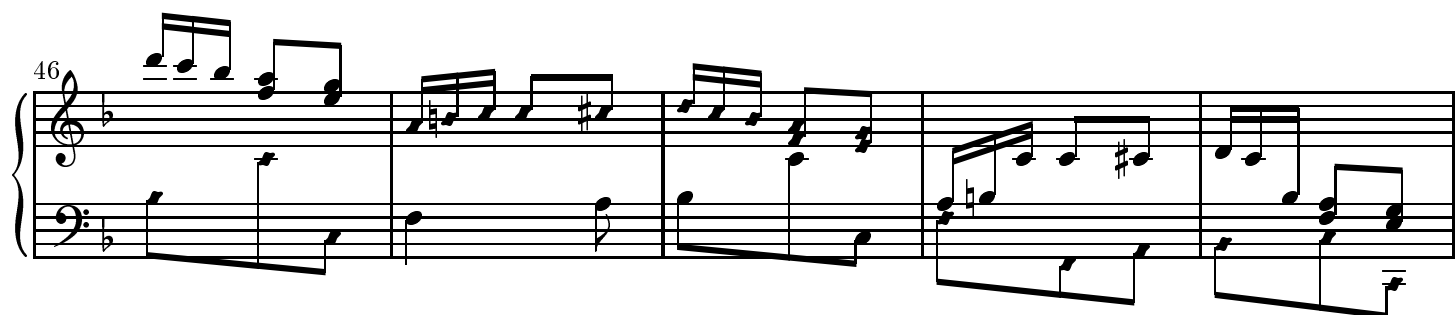
System 1 (Measures 34-39): Treble and bass staves. Treble staff contains eighth-note chords and single notes. Bass staff contains single notes and chords. Measure 34 starts with a treble staff entry. Measure 35 has a repeat sign in the bass staff. Measure 36 has a repeat sign in the bass staff. Measure 37 has a repeat sign in the bass staff. Measure 38 has a repeat sign in the bass staff. Measure 39 has a repeat sign in the bass staff.

40



System 2 (Measures 40-45): Treble and bass staves. Treble staff contains eighth-note chords and single notes. Bass staff contains single notes and chords. Measure 40 starts with a treble staff entry. Measure 41 has a repeat sign in the bass staff. Measure 42 has a repeat sign in the bass staff. Measure 43 has a repeat sign in the bass staff. Measure 44 has a repeat sign in the bass staff. Measure 45 has a repeat sign in the bass staff.

46



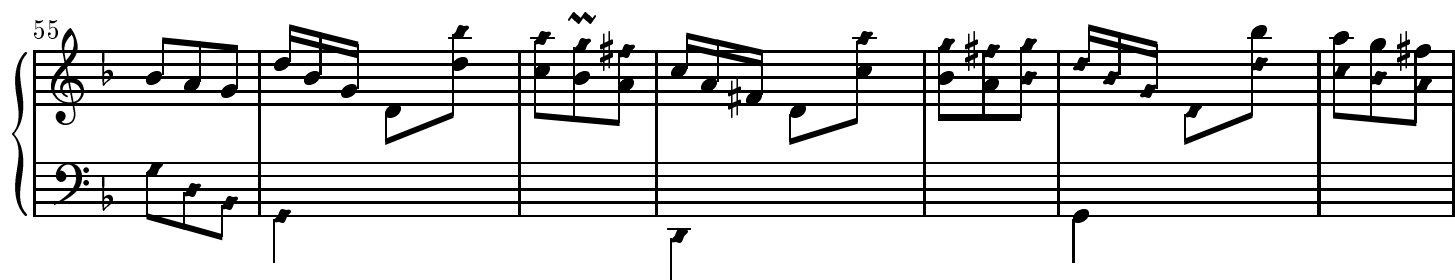
System 3 (Measures 46-50): Treble and bass staves. Treble staff contains eighth-note chords and single notes. Bass staff contains single notes and chords. Measure 46 starts with a treble staff entry. Measure 47 has a repeat sign in the bass staff. Measure 48 has a repeat sign in the bass staff. Measure 49 has a repeat sign in the bass staff. Measure 50 has a repeat sign in the bass staff.

51



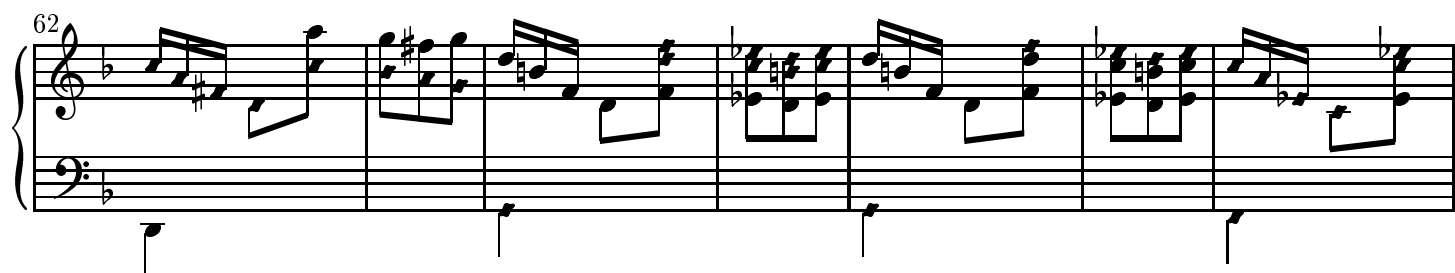
System 4 (Measures 51-54): Treble and bass staves. Treble staff contains eighth-note chords and single notes. Bass staff contains single notes and chords. Measure 51 starts with a treble staff entry. Measure 52 has a repeat sign in the bass staff. Measure 53 has a repeat sign in the bass staff. Measure 54 has a repeat sign in the bass staff.

55



System 5 (Measures 55-61): Treble and bass staves. Treble staff contains eighth-note chords and single notes. Bass staff contains single notes and chords. Measure 55 starts with a treble staff entry. Measure 56 has a repeat sign in the bass staff. Measure 57 has a repeat sign in the bass staff. Measure 58 has a repeat sign in the bass staff. Measure 59 has a repeat sign in the bass staff. Measure 60 has a repeat sign in the bass staff. Measure 61 has a repeat sign in the bass staff.

62



System 6 (Measures 62-67): Treble and bass staves. Treble staff contains eighth-note chords and single notes. Bass staff contains single notes and chords. Measure 62 starts with a treble staff entry. Measure 63 has a repeat sign in the bass staff. Measure 64 has a repeat sign in the bass staff. Measure 65 has a repeat sign in the bass staff. Measure 66 has a repeat sign in the bass staff. Measure 67 has a repeat sign in the bass staff.

69

System 1 (Measures 69-76): The right hand features a complex, rhythmic melody with many beamed sixteenth and thirty-second notes, often in a triplet feel. The left hand provides a steady accompaniment with a repeating eighth-note pattern.

77

System 2 (Measures 77-83): The right hand continues with intricate melodic patterns, including some triplets. The left hand maintains its accompaniment, with some measures featuring a more active eighth-note line.

84

System 3 (Measures 84-90): The right hand has some measures with a tremolo or vibrato-like effect indicated by a wavy line. The left hand continues with its accompaniment, showing some variation in the eighth-note pattern.

91

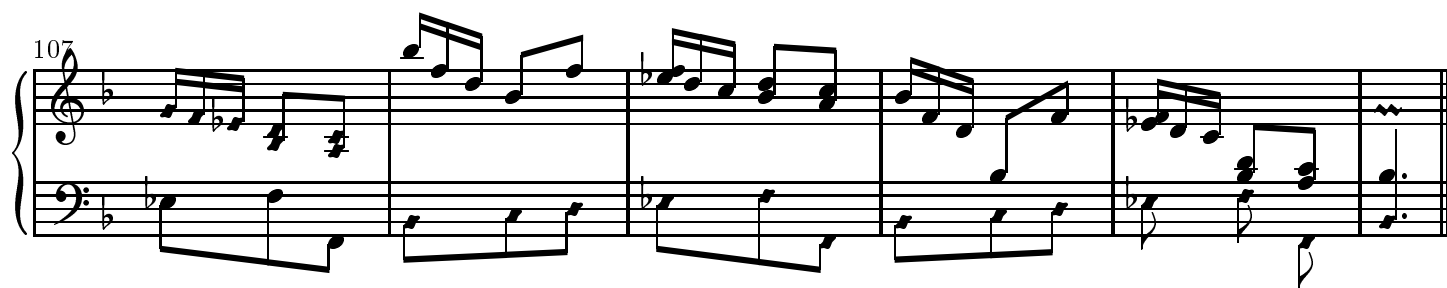
System 4 (Measures 91-95): The right hand features a more active melodic line with frequent beaming. The left hand's accompaniment becomes more rhythmic, with some measures using a dotted eighth-note pattern.

96

System 5 (Measures 96-101): The right hand continues with a flowing melodic line. The left hand's accompaniment is consistent, with some measures featuring a more active eighth-note line.

102

System 6 (Measures 102-107): The right hand features a melodic line with some chromatic movement. The left hand continues with its accompaniment, showing some variation in the eighth-note pattern.



Notes with oval heads are recommended for the right hand, those with diamond heads for the left.

Copyright ©John Sankey 2000. Typeset by GNU LilyPond 1.2.16. Released under the GNU General Public License. You are free to copy and distribute this document as much as you wish, in any format, as long as this notice appears on each copy.