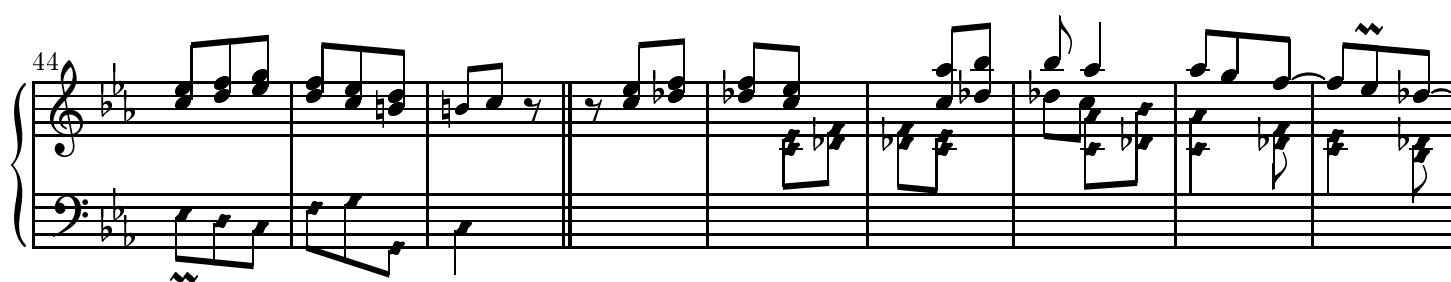
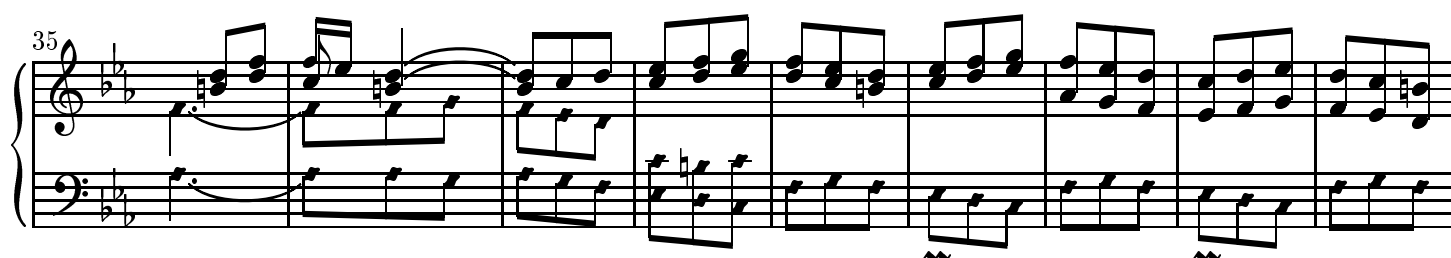
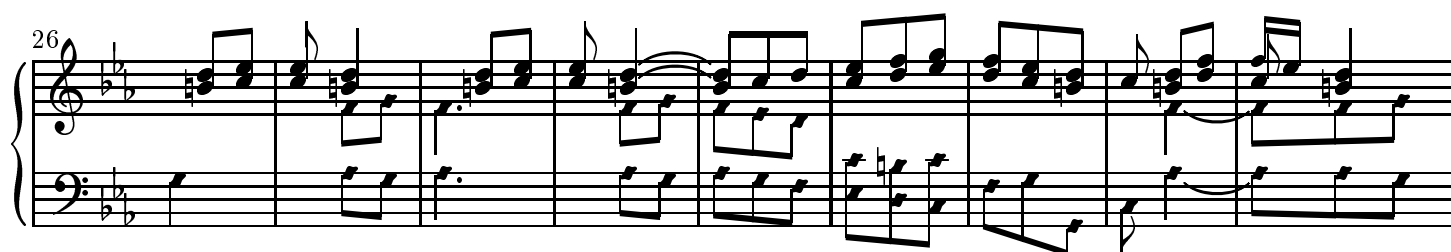
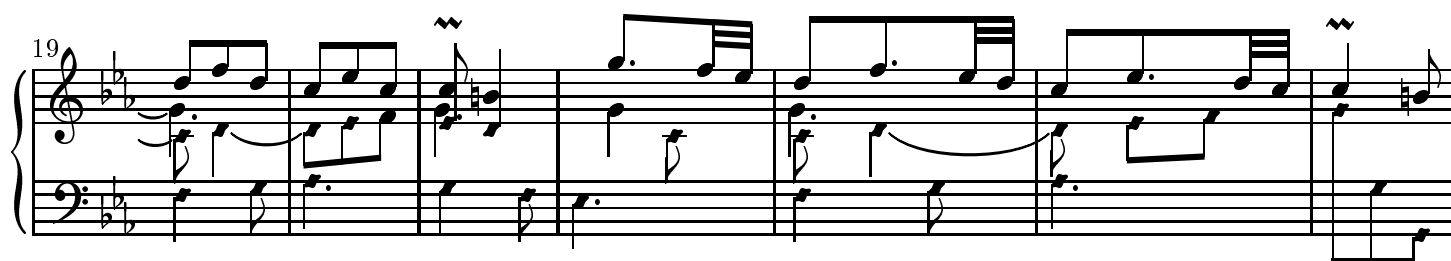
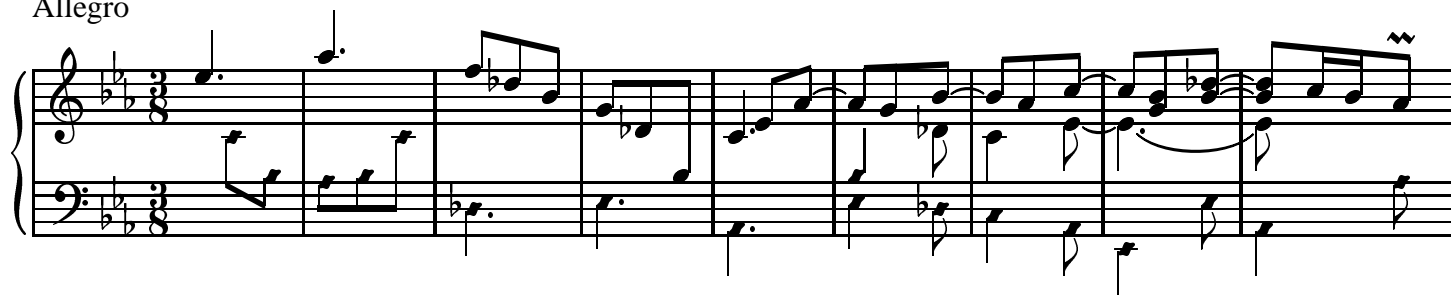


Sonata

DOMENICO SCARLATTI
K.130 L.190

Allegro



53

System 1 (Measures 53-59): The right hand features a melodic line with eighth-note patterns and slurs, while the left hand provides a steady accompaniment of eighth notes. The key signature has two flats.

60

System 2 (Measures 60-68): The right hand continues with eighth-note patterns, including some beamed sixteenth notes. The left hand maintains the eighth-note accompaniment. The key signature has two flats.

69

System 3 (Measures 69-75): The right hand introduces a more complex melodic line with slurs and ties. The left hand continues with eighth-note accompaniment. The key signature has two flats.

76

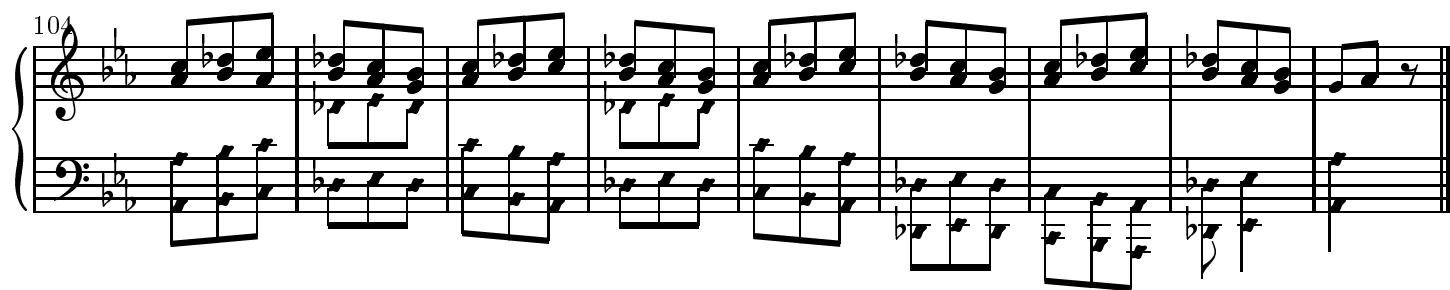
System 4 (Measures 76-84): The right hand features a series of chords and eighth-note patterns. The left hand continues with eighth-note accompaniment. The key signature has two flats.

85

System 5 (Measures 85-93): The right hand continues with a melodic line of eighth notes and chords. The left hand maintains the eighth-note accompaniment. The key signature has two flats.

94

System 6 (Measures 94-100): The right hand features a melodic line with eighth notes and chords. The left hand continues with eighth-note accompaniment. The key signature has two flats.



Notes with oval heads may be played with the right hand, those with diamond heads with the left.

Copyright © John Sankey 2000. Typeset by GNU LilyPond 1.2.16. Released under the GNU General Public License. You are free to copy and distribute this document as much as you wish, in any format, as long as this notice appears on each copy.