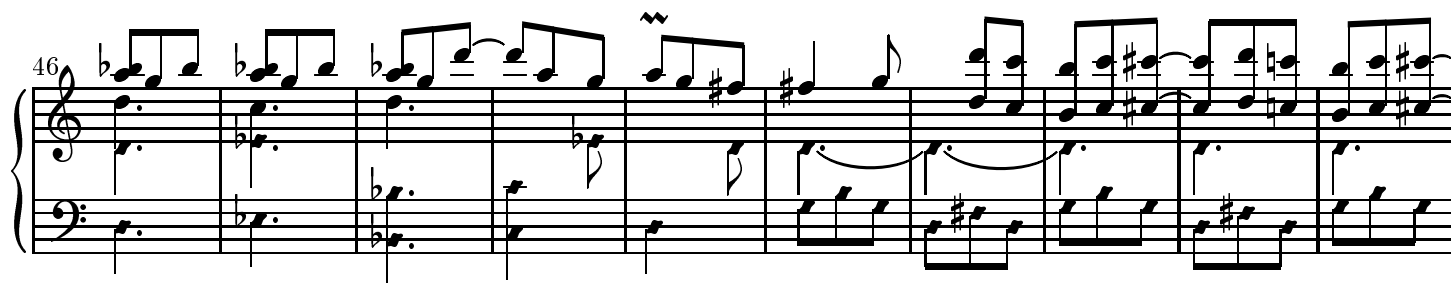
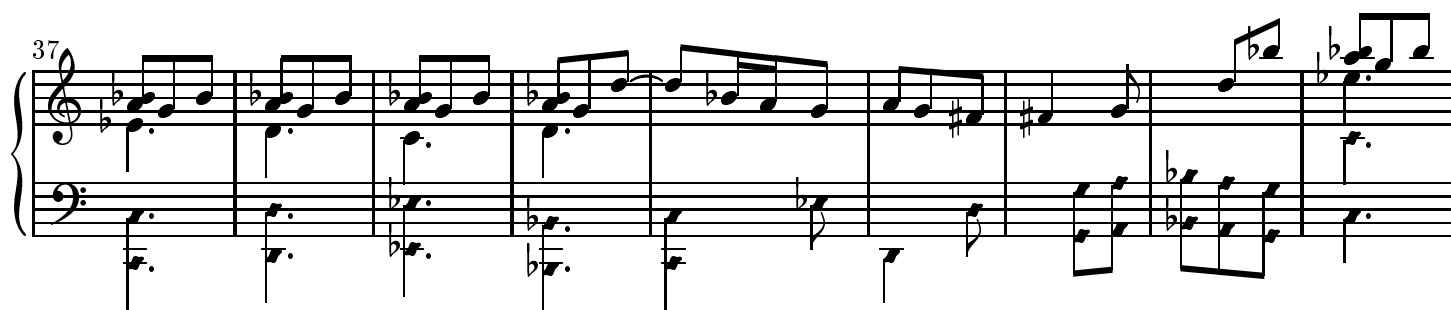
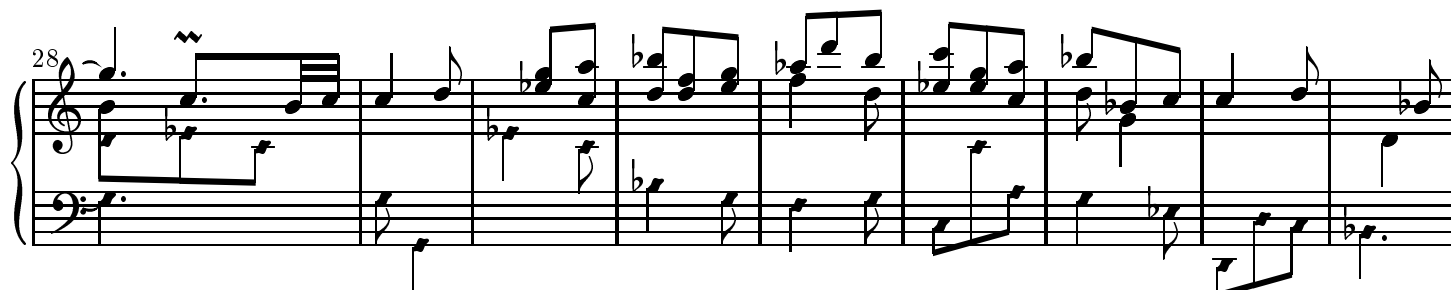
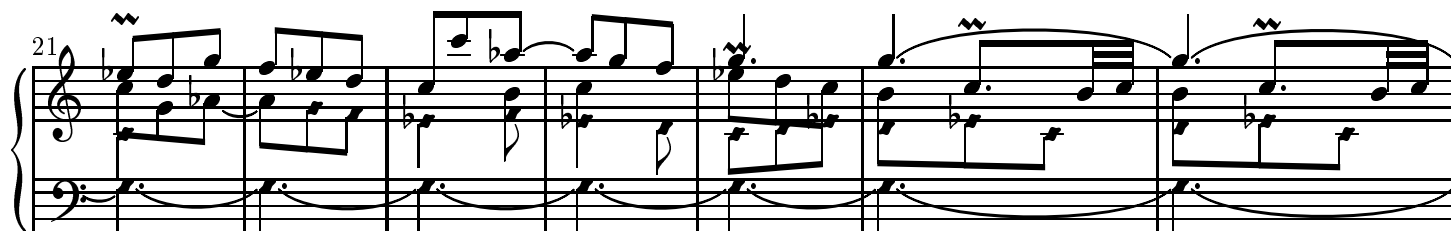
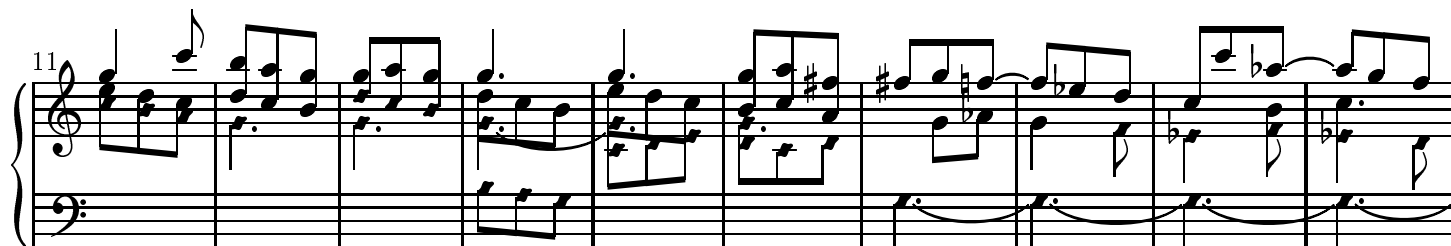
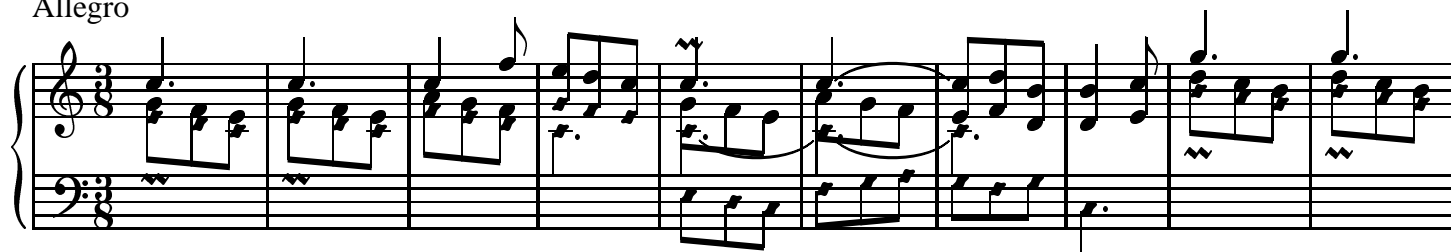


Sonata

DOMENICO SCARLATTI
K.133 L.282

Allegro



56

This system contains measures 56 through 66. The right hand features a continuous eighth-note pattern, while the left hand provides a steady accompaniment of eighth notes. The key signature has one sharp (F#).

67

This system contains measures 67 through 76. The right hand continues with eighth-note patterns, and the left hand has some measures with whole notes. The key signature changes to two flats (Bb, Eb) starting at measure 70.

77

This system contains measures 77 through 86. The right hand has more complex rhythmic patterns, including some beamed sixteenth notes. The left hand continues with eighth-note accompaniment. The key signature remains two flats.

87

This system contains measures 87 through 95. The right hand features a mix of eighth and sixteenth notes. The left hand has some measures with whole notes. The key signature remains two flats.

96

This system contains measures 96 through 104. The right hand has a melodic line with some slurs. The left hand continues with eighth-note accompaniment. The key signature remains two flats.

105

This system contains measures 105 through 114. The right hand has a melodic line with some slurs. The left hand continues with eighth-note accompaniment. The key signature remains two flats.

111

121

133

144

Bars 1-2, 72-3, 76-7 are double third trills. The trill bar 5 is on the g' , of bar 25 on the e'' .

Notes with oval heads may be played with the right hand, those with diamond heads with the left.

Copyright © John Sankey 2000. Typeset by GNU LilyPond 1.2.16. Released under the GNU General Public License. You are free to copy and distribute this document as much as you wish, in any format, as long as this notice appears on each copy.